

# Artemis Wood & Laminate



**krug**

## Artemis Office

Krug's renowned craftsmanship is evident in Artemis. It is available in a variety of standard wood and laminate finishes, as well as custom wood species and custom wood and laminate finishes.







The natural beauty of wood and Krug's renowned craftsmanship is evident in Artemis. It is available in four standard wood species (Walnut, Maple, Cherry, Oak) and finishes, as well as custom species and custom finishes. Krug's extensive custom capability enables almost unlimited options for beautiful workspace.

## Artemis





The lower-height credenza configuration provides a sleek, contemporary look.



Wall-hung overheads & panels create useful and attractive storage space that is functional and decorative.





## Artemis Casegoods Environmental

The use of recycled and recyclable materials, combined with environmentally-friendly production processes and packaging, have made Artemis a level™-certified product, and a contributor to LEED™-driven specifications. Artemis is certified by the Greenguard™ standard for indoor air emissions, and it's unique capability for extending product life makes it a responsible environmental choice - and one that will provide exceptional return on investment over time.



16 **Artemis Base Styles**



Square Metal Legs



Disc Base



Square Wood Leg



Panel Leg



Gable Base



4" Gable Base



Height Adjustable Base



**VENEERS & LAMINATE**

Veneers are rift cut Red Oak, and flat sliced Cherry, Maple, and Walnut. Laminate worksurfaces are available with two options - Laminate Tops with Wood Edge or Laminate Tops with Polymer Edge.



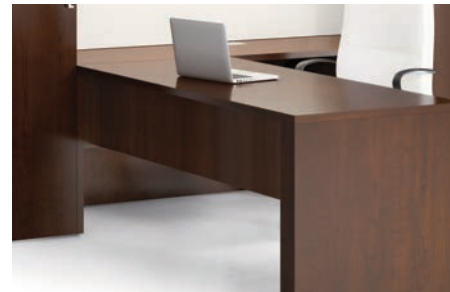
**LOCKS**

Locks are provided as standard features on all pedestals. Bookcase pedestal are available as an option.



**EDGE PROFILE**

Desks, Credenzas, Returns, Linking Units, Corner Units, Bookcase and 2 Hi Storage Units have profiles on all edges, with the exception of Artemis Edge - Fluted Profile Polymer Edge



**MODESTY PANELS**

Modesty panels are standard on all desks, and optional on shaped tops, returns, linking units and credenzas.



**PULLS**

All pulls are die cast with a choice of Silver Metallic powder coat, and Grey Metallic powder coat finish options. Pulls are supplied on all drawers.



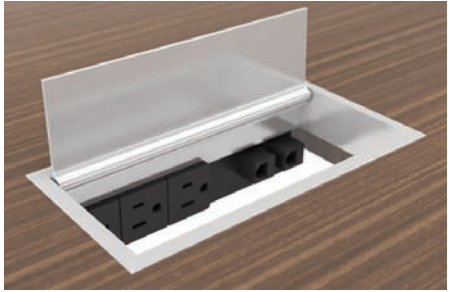
**MEDIA HUB**

Bookcase storage features touch latch doors & wire management cutout in the base of center bookcase. Optional hangover panel is standard in any of our palette finishes and can be specified with or without white boards. Optional runoff tops and bases, desk and bar heights, sold separately. Back of unit is finished.



**LEGS**

The metal legs in Artemis have a Silver Metallic finish.



**POWER OPTIONS**

Artemis features one round grommet in standard location, which can be upgraded to an optional PowerPort.

**EDGE PROFILES**



FLAT EDGE - T



RADIUS EDGE - D



FLUTED EDGE - M

**PULL STYLES**



ATHENA PULL -GREY METALLIC



DIANA PULL -GREY METALLIC



HERA PULL -GREY METALLIC



SONO PULL -GREY METALLIC



ATHENA PULL -SILVER METALLIC



DIANA PULL -SILVER METALLIC



HERA PULL -SILVER METALLIC



SONO PULL -SILVER METALLIC



FSC  
www.fsc.org

FSC® C021699

the mark of responsible forest®



All products are air emissions certified and are available as FSC® certified

# krug

solutions@krug.ca | www.krug.ca | 1.888.578.KRUG