

Jordan Compact Recliner



krug HEALTHCARE 

Jordan Compact Recliner

The Jordan Compact Recliner is lighter-scaled, lower weight and dimensionally smaller than most sleep recliners, but maintains comfortable proportions for extended sitting, resting and treatment. It is a product that has some unique solutions to very real and practical needs and the perfect solution for patient rooms and treatment areas where available space and freedom of movement are important.





Fully Upholstered Arm



Fully Upholstered Arm with Urethane Arm Cap



Fully Upholstered Arm with Solid Surface Arm Cap

Jordan Compact Recliner Arm Styles

Jordan Compact Recliner Enhanced Cushioning

The Jordan Compact Recliners have been designed with a softer seat, a more pronounced headrest, and contoured back shaping for improved support. These enhancements, along with the addition of dual-density foam, make these recliners the leader in patient comfort.



The Jordan Compact Recliner features a Infinitely Adjustable Mechanism:

Position A - seated with feet on the floor, footrest in down (closed) position. Seat-back angle is 102 degrees.

Position B - footrest is fully extended. The seat-back angle remains at 102 degrees.

Position C - is the range of infinite adjustability from the seated position of 102 degrees back angle to the fully flat position at a maximum of 175 degrees. The Infinitely Adjustable Back angle can be locked in any position with the back adjustment lever.

Jordan Compact Recliner Infinitely Adjustable





HIGH DURABILITY MECHANISM

Compact Recliner mechanisms are designed for high-traffic, intensive use in care-giving environments. They are built with high-strength steel, and include Delrin™ wear pads between moving components for added smoothness and longevity.



TRENDELENBERG MECHANISM

This mechanism provides the additional Trendelenberg position: full recline with footrest fully extended, the back is now 65 degrees from vertical - resulting in the feet being above the head.



BACK ADJUSTMENT LEVER

The Jordan Compact Recliner features a Black back adjustment lever which creates an infinite number of back adjustments within the chair. Conveniently located on the care-giver side of the arm.



FOOTREST LEVER

The footrest lever extends and closes the built-in footrest. The footrest lever is finished in powder-coated Silver to compliment the casters.



FOOT TRAY

This option provides a concealed, pull-out tray to assist patients with ingress and egress. It features a non-slip tread and dedicated casters that prevent tipping when standing on the tray.



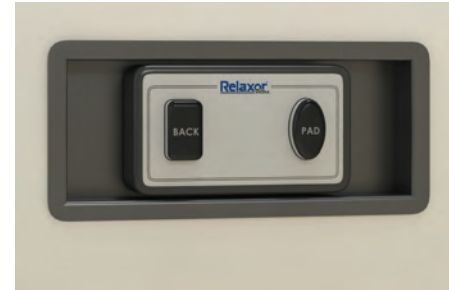
PATIENT TRANSFER ARM

The Patient Transfer Arm is designed to fold down where the arm is level with the chair seat. This design allows the caregiver to easily transport patients from the chair to bed. The arm is folded down by accessing the adjustment lever at the side of the chair.



POWER CONTROL

Optional motorized recline features a single function control which operates back and ottoman control independently. Power also can also be specified with a lithium battery pack able to run 200 cycles on a full charge.



THERMAL COMFORT OPTION

Providing warmth to patients undergoing chemotherapy and other treatments can be vitally important. Thermal Comfort features a recessed controller which provides two heat zones: one in the seat and one in the back, including a safety time-out feature after 30 minutes.



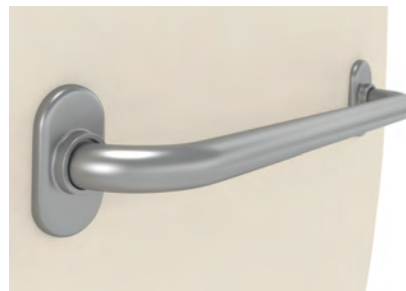
CASTERS

The standard caster is 4" in diameter, soft wheel, full swivel, featuring a lock that in a single action locks both the swivel and rotation of the caster.



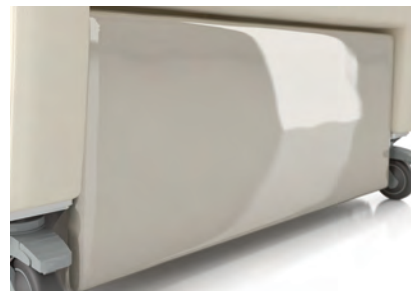
CENTRAL CASTER LOCKING

This option allows for single action locking of all four casters at one time. Casters are locked both directionally and rotationally, keeping the recliner in place when locked.



PUSH BAR

Pushbar is ergonomically designed to assist care-giving staff in the movement and operation of the recliner, and reduce back strain on the care-giver.



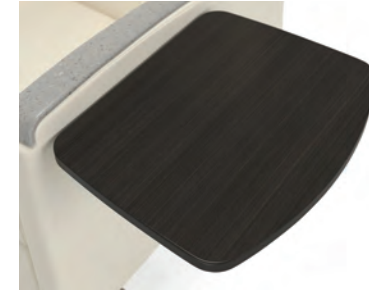
FOOTREST PROTECTIVE COVER

This optional clear protective cover is sewn into (and over top of) the lower portion of the upholstered ottoman, providing a layer of protection. It features an anti-fog additive to maintain clarity, and is resistant to cleaning solutions.



SWING AWAY TABLET

The Swing Away Tablet is designed to be easily operated by the caregiver or user. The Break Away design allows for the tablet to be easily pushed away from the user in an emergency to gain quick access to the patient.



FLIP UP TABLET

The Flip up tablet folds flat (protruding 3" from the side of the recliner when flat) and it can be located on either side of the recliner. It is available in Beech and Maple veneer, as well as Laminate with a Polymer edge.



IV POLE & HOLDER

The Jordan IV Pole is height adjustable (in a range of 27"), and can be added in the field. It can be located on either the left or right side (facing) at the back of the recliner.



FOLEY HOOK

This recessed, retractable hook system provides a mounting system for catheter bags. It is spring-loaded to automatically retract when not in use, to eliminate any hazard.

STATEMENT OF LINE



JOR8-CSRUPHS1



JOR8CSRUURS1



JOR8-PCSRUPHS1



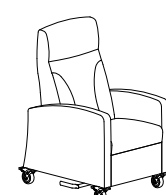
JOR8-PCSRUURS1



JOR8-CSRTUPHS1



JOR8-CSRTUURS1



JOR8-PCSRUPHS1



JOR8-PCSRUURS1

URETHANE COLOR OPTIONS



Taupe



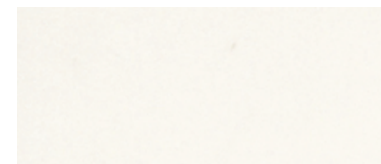
Black



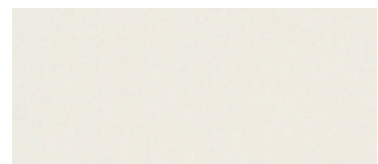
Grey

SOLID SURFACE

GROUP GRADE A - WHITE

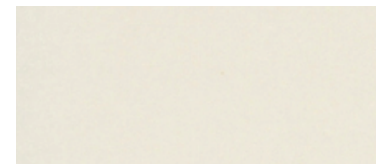


Glacier White



Cameo White

GROUP GRADE A - COLOR



Bisque



Linen

GROUP GRADE B

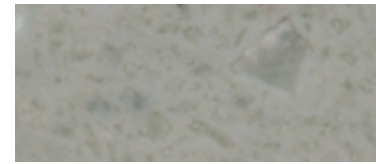


Antarctica

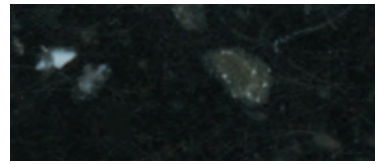


Savannah

GROUP GRADE C



Dove



Deep Night Sky



Jordan Compact Recliner Environmental

The use of recycled and recyclable materials, combined with environmentally-friendly production processes and packaging, have made Faeron a level™-certified product, and a contributor to LEED™-driven specifications. Faeron is certified by the Greenguard™ standard for indoor air emissions, and it's unique capability for extending product life makes it a responsible environmental choice - and one that will provide exceptional return on investment over time.



All products are air emissions certified and are available as FSC® certified

krug HEALTHCARE 

solutions@krug.ca | www.krug.ca | 1.888.578.KRUG