

# Nuvo Conference



**krug**

# Nuvo

An innovative concept that pairs sleek design with state-of-the-art technology, Nuvo is a leading conferencing solution. With Nuvo, it's a snap to assemble tables quickly and easily and to update and reconfigure technology and cabling. Nuvo's vast range of material choices including gloss aluminum, the highest-grade sustainable veneers, as well as laminate, solid surface and back-painted glass means the product can be specified to suit a variety of different environments from casual gathering spaces to formal meeting and video conferencing spaces.





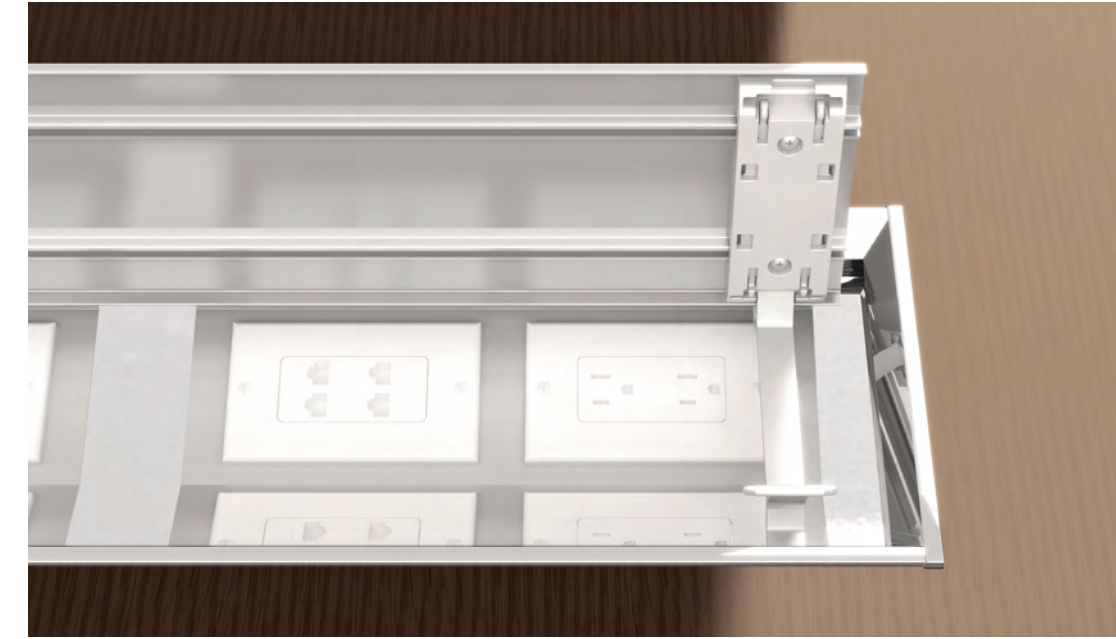
## Nuvo Media

Video conferencing is integrated into the meeting room with Nuvo's Visio table, which provides clear sight lines to the video conferencing camera and monitor mounted on the Nuvo Media Wall. The Media Wall is available in a range of standard and custom sizes and options.





# Nuvo Back-Painted Glass



## Nuvo Thoughtfully Designed

Meeting rooms can be high traffic areas, with lots of different users every day. Many Nuvo components feature rounded corners, so accidental contact with tops and bases isn't painful or damaging, and so an additional user can more easily be added around a fully occupied table. Whether it's one table or one hundred, we make each table to your exact specifications, with state-of-the-art Technology and artisanal pride- these are the high standards forged from over **140** years of craftsmanship.

# Nuvo Base Styles



Oval Base



Panel Base



Formed Metal Base



Square Base



Rectangular Base



Oval Island Base



Rectangular Island Base

TOP OPTIONS



SQUARE CORNER TOP



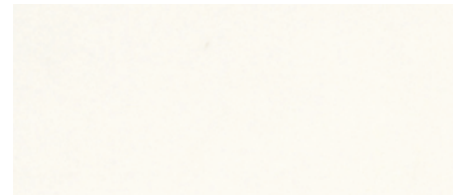
ROUNDED CORNER TOP



BACK-PAINTED GLASS TOP

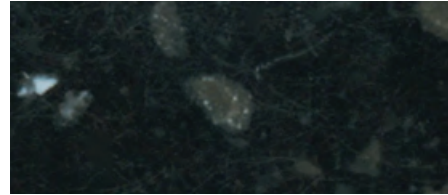
SOLID SURFACE TOP OPTIONS

GRADE A - WHITE



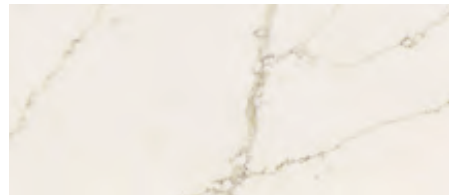
Glacier White

GROUP GRADE C

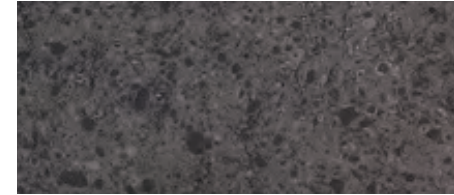


Deep Night Sky

GROUP GRADE D



Valente Pearl



Grigione Silo

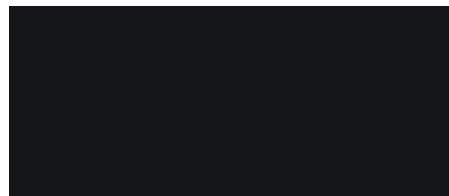
BASE FINISH



Gloss Aluminum - Standard Base Trim



Matte Chrome - Standard Formed Metal Base



Matte Black - Optional Base Trim & Formed Metal Base



BACK-PAINTED GLASS TOPS

Back-Painted glass tops are etched 10mm thick tempered glass and available as an option in nine color selections.



BASE PLATES

Available in a choice of Wood, Laminate, Matte Black or Gloss Aluminum finish.



RECYCLE/WASTE BIN

Stainless Steel sliding bin containing two 14 L plastic bins for recycling and waste. Opens with the door.



CUTLERY TRAY

- Surface silver grained
- Impact-resistant polystyrene
- Environmentally friendly, fully recyclable
- Antistatic, easy to clean



METAL CABLE MANAGER

Metal Cable Manager attaches to the Formed Metal Base magnetically allowing cable management systems cables to run to the floor monument.



SPINE CABLE MANAGER

Nuvo Spine Cable Manager is available with formed Metal bases as an external cable management system solution.



BACK-PAINTED GLASS PANELS

Nuvo Wall Panels & Media Doors are available in Back-painted glass. Vertical glass surfaces are smooth and can be used with dry-erase markers.

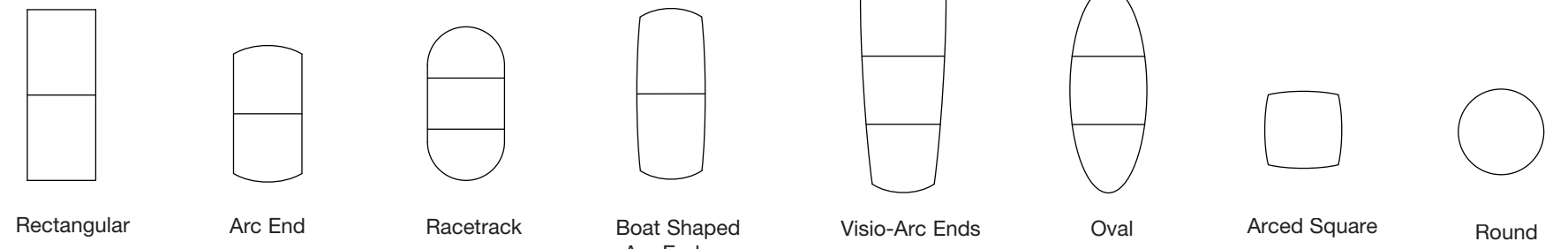


CONSOLES POWER/DATA MODULES

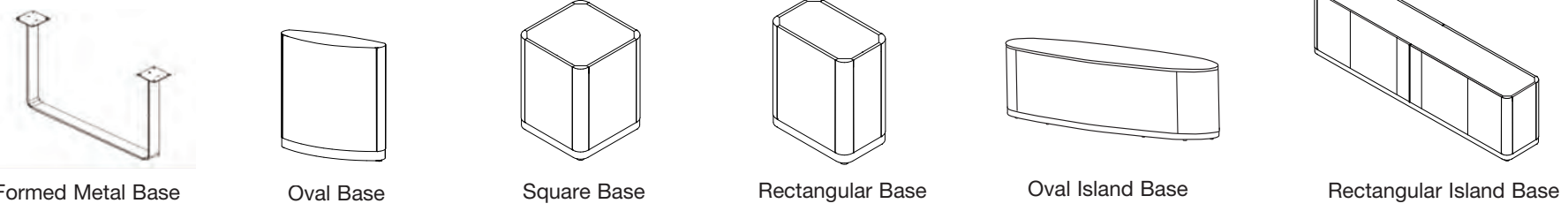
Console power/data/media modules are available in preconfigured options or can be customized by adding plate-mounted or snap-in data ports to any of the 4 standard power modules.



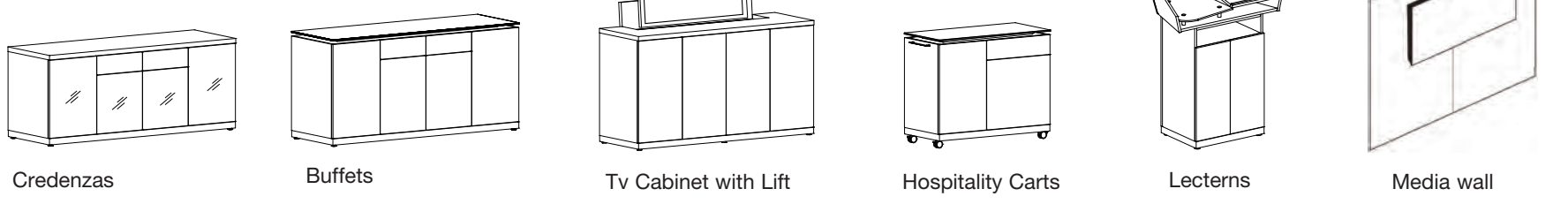
**Top Shapes**



**Bases**



**Media & Storage**



# Nuvo Conference Environmental

The use of recycled and recyclable materials, combined with environmentally-friendly production processes and packaging, have made Nuvo a level™-certified product, and a contributor to LEED™-driven specifications. Nuvo is certified by the Greenguard™ standard for indoor air emissions, and it's unique capability for extending product life makes it a responsible environmental choice - and one that will provide exceptional return on investment over time.





FSC  
www.fsc.org  
FSC® C021899

The mark of responsible forestry



All products are air emissions certified and are available as FSC® certified

# krug

solutions@krug.ca | www.krug.ca | 1.888.578.KRUG