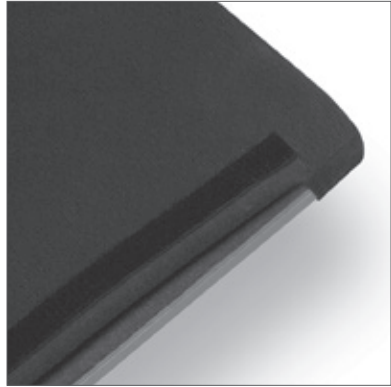


STANDARD FEATURES



**TAMPER-RESISTANT HARDWARE**  
This is utilized on all connection points of the product that are (or potentially) accessible, preventing components from being removed or the product being dis-assembled. The unique tools for these fasteners are available from Krug for any maintenance and component replacement.



**INACCESSIBLE STAPLES**  
All staples on this product are covered and made inaccessible with a secondary barrier, which is fastened with tamper-resistant hardware.



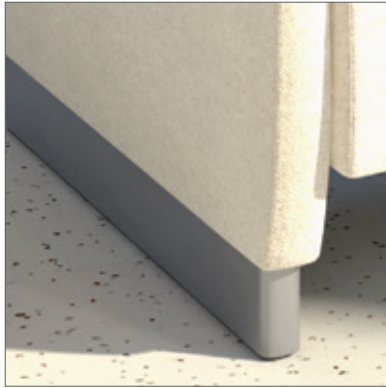
**LIGATURE PREVENTION**  
This product has been designed to minimize the ability to use it for ligature - the closed arm panels, the elimination of legs, and the option of Closed Gap Upholstery significantly reduce the points on the product that could be used for ligature.



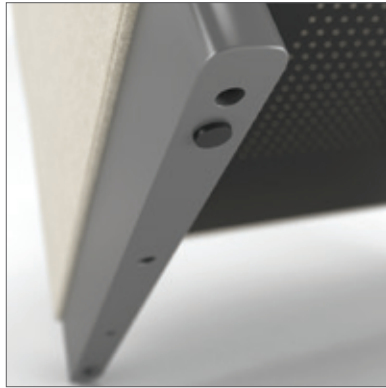
**SPRINGLESS SEAT CONSTRUCTION**  
A very comfortable and durable sit is achieved without internal metal components such as springs - the high resiliency foam and heavy-duty suspension sheet webbing are materials that cannot be used to cause harm or damage.



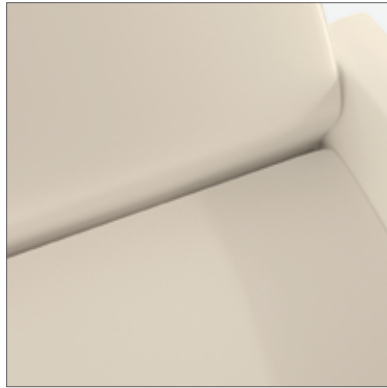
**WALL SAVER**  
The position of the back in relation to the base of the this product is designed so the back won't impact when the chairs are pushed against the wall - avoiding potential damage to both the chairs and walls.



**ARM PANEL BASE**  
This product has no legs (which could be used to cause harm or damage, or for ligature); instead the bottom portion of each arm panel is a 3" vinyl-clad runner. The durable covering is tightly secured and non-removable, is easy to clean, and will resist damage caused by cleaning equipment, etc.



**NON-REMOVABLE GLIDES**  
The non-marring glides are epoxied and nailed in place to prevent their removal. They can be field-replaced with the use of tools.



**CLEAN OUT**  
The expanded clean out space on Zola BH seating provides an opening between the seat and back to assist in cleaning of the product, and prevents the buildup of debris and germs. It also reduces the ability to use this area for the concealment of contraband or weapons. Alternatively, Closed Gap Upholstery can be specified to prevent the use of this area for such concealment.

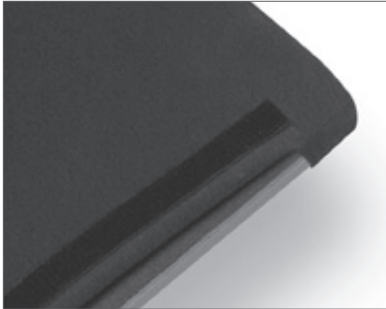
ZOLA BEHAVIORAL HEALTH



krug

HEALTHCARE SOLUTIONS

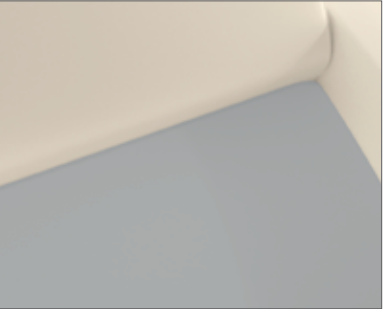
OPTIONAL FEATURES



**REMOVABLE/REPLACEABLE UPHOLSTERY**  
Removable upholstery covers can be specified on this product, to facilitate cleaning and assist with infection control. They utilize tamper-resistant hardware, and inaccessible staples. Replacement upholstery covers have the same features, and can be field installed with tamper-resistant fastener tools.



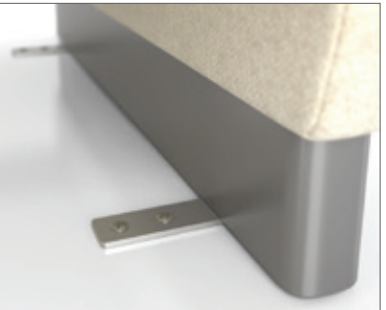
**BARIATRIC**  
The offering includes a standard bariatric-size 1-seater model, as well as the option to specify bariatric weight rating for all other models in the offering - this provides a weight rating that exceeds 750 lbs, and includes additional seat support and an additional back leg on the 2- and 3-seat models only.



**CLOSED GAP UPHOLSTERY**  
This option provides complete closure and elimination of the normal gap between upholstered seat, back and arm panels in the seat area of the product - preventing the use of these areas for hiding weapons and contraband. This option further reduces the ability to utilize the product for ligature.



**WEIGHTING**  
The option of additional weighting can be specified, to specific weight requirements. Additional weighting is achieved through steel plating that is fastened to the interior side of the Steel Bottom Shield, making it secure and inaccessible.



**FLOOR ANCHORING**  
This can be provided when the product is ordered, or can be added in the field. In both cases, the fastening hardware attaching the steel floor anchoring brackets to the product is tamper-resistant.



**STEEL BOTTOM SHIELD**  
This prevents access to the interior frame and components. The powdercoated heavy-gauge steel has venting to allow circulation (venting holes are small enough to prevent use for concealment or ligature), and is fastened with tamper-resistant hardware. The Bottom Shield also adds weight to the product.



**TABLES**  
A range of occasional tables designed specifically for behavioral health environments is included in this product offering, with a similar range of features and options to provide safety and security to patients and care-givers. For detailed information please refer to the Zola Behavioral Health Tables brochure, and the price guide.



All products are air emissions certified and are available as FSC® certified

krug

solutions@krug.ca | www.krug.ca | 1.888.578.KRUG



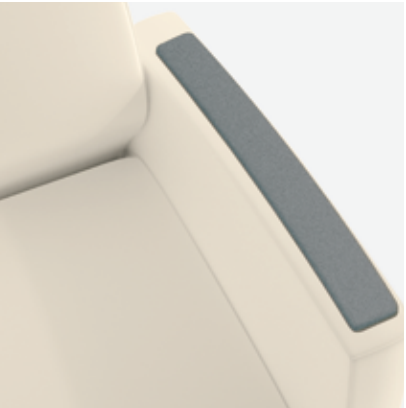


Zola Behavioral Health has been developed through a meticulous and extensive research process over more than three years. We've consulted with, and had this product reviewed by, leading facilities professionals, specifiers and consultants specializing in behavioral health environments.

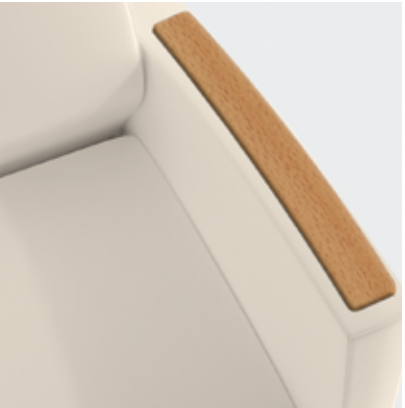
We set out to create a market-leading, durable solution for the protection and safety of patients and care-givers - and yet with an aesthetic appeal that contributes to making behavioral health environments less clinical, by adding warmth and a less institutional sensibility. With its addition to our already-extensive Zola product offering, mental health areas can have furnishings that are little different in appearance from those used in other spaces.



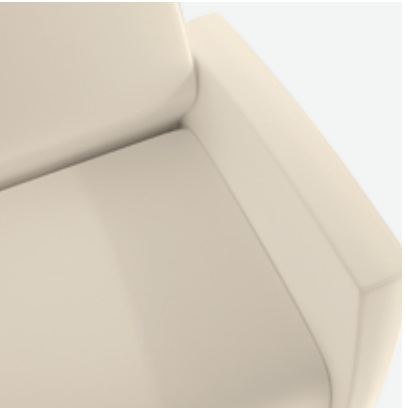
Different upholstery materials can be specified in any combination within the same unit and configuration, allowing for a range of durability and aesthetics. Tables are available in veneer, plastic laminate, and Palette finishes - and an optional solid surface top.



URETHANE ARM CAP



WOOD ARM CAP



UPHOLSTERED ARM

Arm caps are secured with tamper-resistant hardware.