

Zola Behavioral Health

1



krug HEALTHCARE 

Zola

Behavioral Health

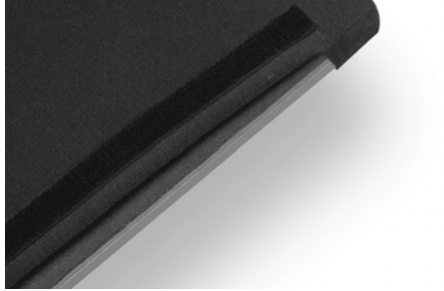
Zola Behavioral Health has been developed through a meticulous and extensive research process over more than three years. We've consulted with, and had this product reviewed by, leading facilities professionals, specifiers and consultants specializing in behavioral health environments. We set out to create a market-leading, durable solution for the protection and safety of patients and care-givers - and yet with an aesthetic appeal that contributes to making behavioral health environments less clinical, by adding warmth and a less institutional sensibility. With its addition to our already-extensive Zola product offering, mental health areas can have furnishings that are little different in appearance from those used in other spaces.







TAMPER RESISTANT HARDWARE
All screws used on the Zola Behavioral Health units have been replaced with tamper resistant security screws.



INACCESSIBLE STAPLES
All staples on this product are covered and made inaccessible with a secondary barrier, which is fastened with tamper-resistant hardware.



LIGATURE RISK REDUCTION
This product has been designed to minimize the ability to use it for ligature - the closed arm panels, the elimination of legs, and the Restricted Access Upholstery significantly reduce the points on the product that could be used for ligature.



SPRINGLESS SEAT CONSTRUCTION
A very comfortable and durable sit is achieved without internal metal components, the high resiliency foam and heavy-duty suspension sheet webbing are materials used to deter harm or damage.



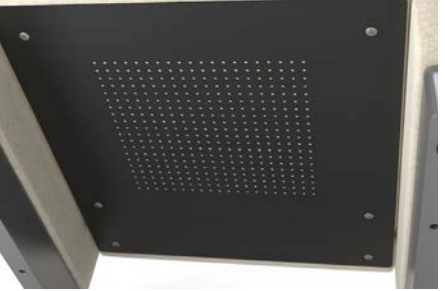
STEEL BOTTOM SHIELD
This hinders access to the interior frame and components. The powdercoated heavy-gauge steel has venting to allow circulation (venting holes are small enough to hinder use for concealment or ligature), and is fastened with tamper-resistant hardware.



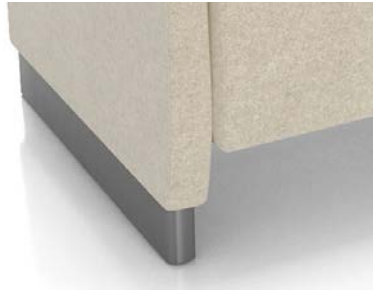
FLOOR ANCHORING
This can be provided when the product is ordered, or can be added in the field. In both cases, the fastening hardware attaching the steel floor anchoring brackets to the product is tamper-resistant.



PLUS UPGRADE
The offering includes a standard plus-size 1-seater model, as well as the option to specify plus weight rating for all other models in the offering - this provides a weight rating that exceeds 750 lbs, and includes additional seat support and an additional back leg on the 2- and 3-seat models only.



SUPPLEMENTAL WEIGHT
The option of additional weighting can be specified, to specific weight requirements. Additional weighting is achieved through steel plating that is fastened to the interior side of the Steel Bottom Shield, making it secure and inaccessible.



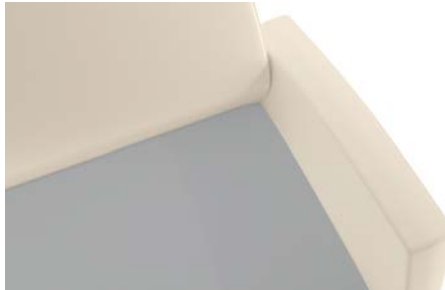
ARM PANEL BASE
This product has does not have legs (which could be used to cause harm or damage, or for ligature); instead the bottom portion of each arm panel is a 3" vinyl-clad runner. The durable covering is tightly secured, easy to clean, and will resist damage caused by cleaning equipment, etc.



SECURED GLIDES
The glides are epoxied and nailed in place to hinder their removal. They can be field-replaced with the use of tools.



WALL SAVER
The position of the back in relation to the base of this product is designed so the back won't impact when the chairs are pushed against the wall - avoiding potential damage to both the chairs and walls.



RESTRICTED ACCESS
This product has been designed to minimize the ability to use it for ligature or concealment by restricting access to the interior of the chair.



TABLES
A range of occasional tables designed specifically for behavioral health environments is included in this product offering, with a similar range of features and options to provide safety and security to patients and care-givers.



REMOVABLE UPHOLSTERY
Removable upholstery covers can be specified on this product, to facilitate cleaning and infection control. They utilize tamper-resistant hardware, and inaccessible staples.



COMBINATION UPHOLSTERY
Combination upholstery option includes more than one upholstery cover within the same unit. Back, Seat, or arm can be specified in a different fabric selection.



CAL133 & MOISTURE BARRIER
California Technical Bulletin 133 is a flammability test for seating. Krug offers a compliance method, in combination with non-flammable upholstery covers, may enable products to meet certification requirements for this test. This process at the same time also provides the products with a Moisture Barrier.

Zola

Environmental

The use of recycled and recyclable materials, combined with environmentally-friendly production processes and packaging, have made Zola a level™-certified product, and a contributor to LEED™-driven specifications. Zola is certified by the Greenguard™ standard for indoor air emissions, and its unique capability for extending product life makes it a responsible environmental choice - and one that will provide exceptional return on investment over time.



All products are air emissions certified and are available as FSC® certified



One-seat



One-seat Plus



Two-seat



Three-seat

krug HEALTHCARE 

solutions@krug.ca | www.krug.ca | 1.888.578.KRUG