

# Zola Privacy Lounge & Tables



**krug**



# Zola Privacy Lounge

Zola Privacy is built to last:

its heavy-duty structure is designed for intensive use environments. When any component is damaged, it can be easily changed out on its own, instead of having to replace or repair an entire unit. Along with its use of recycled and recyclable materials, the replaceability of components means Zola can provide exceptional long-term value, and be an investment in sustainability.









## Zola Privacy Arms & Panels



Interim Arm



Modular Arm



Privacy Side Panel



Semi-Private Side Panel



Zola Privacy creates space that artfully accommodates multiple users with exceptional comfort and style.





Zola Privacy takes public seating to a new level of sophistication. It's a modern solution for modern people spaces.







Zola Privacy can be specified in select preconfigured stand-alone arrangements. The offering includes one, two and three seat units in both mid height and full height styles. The units are pre-assembled with either full privacy or semi-private side panels.

## Zola Privacy

### Pre-configured







Modular construction allows for complete cleaning and disinfecting, making Zola an excellent solution for healthy spaces.



# Zola Privacy In-Line Walls with Media



## Zola Privacy Tables, Seatables & Tablets



### SEATABLES

Seatables are fully upholstered seat modules, in a range of shapes and sizes.



### TABLET

Tablets are available in laminate, glass, veneer, and palette finishes, fastened to the Zola leg.





Zola is designed to enable change: components are inter-changeable and reconfigurable, with three back heights (34", 38" and 50") in both curved and rectilinear forms, Zola offers almost unlimited configuration for a multitude of applications; reception spaces, waiting areas, meeting space, library settings, and more.

## Zola Privacy Curve







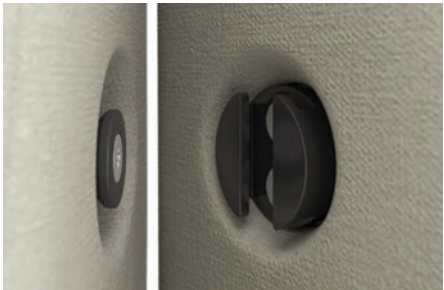




**CLEAN OUT**  
Zola Lounge chairs have a built-in clean out feature: a space at the back of the seat that allows liquid, dirt and debris to fall to the floor for easy clean up and maintenance.



**LEGS**  
The legs offered on Zola Lounge are Silver Metallic or Matte Black and feature glides that are adjustable up to 1.25", which provide leveling capability over longer spans.



**BACK CONNECTION**  
The Zola Privacy back linking connectors are made of sturdy steel construction. It is a two part bracket fastened with metal-to-metal connections. Brackets are not visible when units are linked.



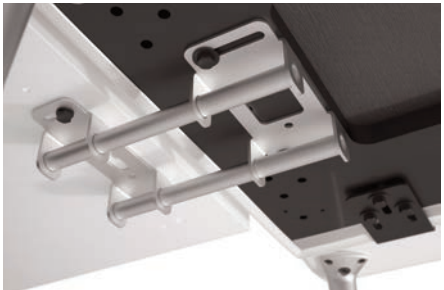
**TWIN BACK**  
Zola Privacy is available in unique Twin Back models for both straight and curves styles. The one piece back-to-back design provides a clean, minimal solution for space division and maximizing seating.



**LINKING SEAT-TO-SEAT**  
The seat-to-seat linking bracket is powder-coated steel construction in a black finish. It is fastened with metal-to-metal connections with hardened steel bolts to ensure exceptional durability and strength.



**PLUS UPGRADE**  
Zola seating is available with optional Plus Upgrade. Plus Seating has been engineered to support higher weight capacities, accommodating a wider variety of users.



**LINKING TABLE-TO-SEAT**  
The Zola table-to-seat bracket is powder-coated steel in a Silver Metallic finish to match the legs and casters. This linking bracket is fastened with metal-to-metal connections from the seat to the table.



**WEIGHT CAPACITIES**  
Zola weight capacities are as follows:  
One-Seat - 300 lbs  
One-Seat plus - 750 lbs  
Two-seat - 525lbs  
Two-seat plus - 975 lbs  
Three-seat - 750 lbs  
Three-seat plus - 1150 lbs



**URETHANE ARM CAP**  
The optional urethane arm cap provides enhanced durability and protection for the arms. Urethane arm caps are available in two color options; Grey and Taupe. The urethane arm cap is field replaceable if damaged or degraded.



**UNDER-MOUNT POWER**  
The Under-mount Power unit provides dual power/USB outlets for multiple devices. It can be located below seats and tables.



**SOLID SURFACE ARM CAP**  
The optional Solid Surface Arm Cap provides enhanced durability, protection and cleanability for the arms. It is available in 8 standard colors.



**PRIVACY SCREEN**  
Zola Privacy Screens are made of durable frosted acrylic and can be mounted to both mid and full height backs. Steel mounting hardware enables screens to be replaced in the field.



**SHELVES & POWER**  
Back-mounted shelves can be specified in either 30", 36" or 42" and are available in veneer, laminate and Palette finishes. The surface-mounted Shelf PowerDoc provides dual power/USB outlets.



**REMOVABLE & REPLACEABLE COVERS**  
Removable seat and back covers can be easily removed for cleaning and disinfection or replaced if damaged.



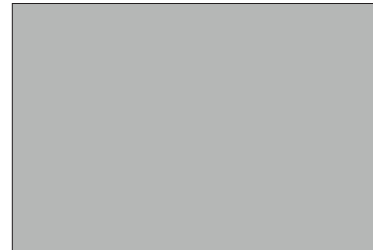
**SEAT & TABLE POWER**  
The flush-mounted power unit provides dual power/USB outlets for multiple devices. It can be located in either side of the unit, or in the front.



**COMBINATION UPHOLSTERY**  
Combination upholstery option includes more than one upholstery cover within the same unit. Back, Seat, Closed or Semi-closed arm can be specified in a different fabric selection.



## METAL FINISHES

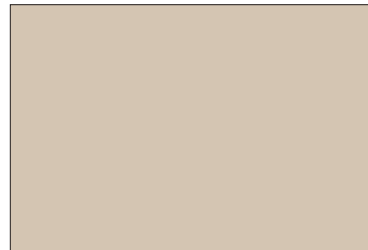


Silver Metallic

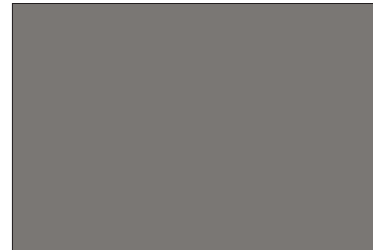


Matte Black

## URETHANE



Taupe



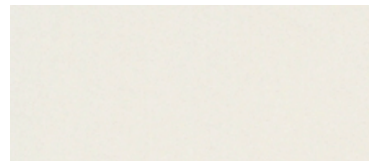
Grey

## SOLID SURFACE

## GROUP GRADE A - WHITE

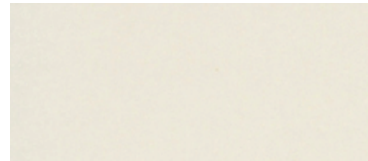


Glacier White

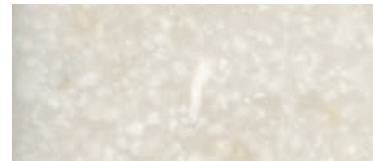


Cameo White

## GROUP GRADE A - COLOR



Bisque

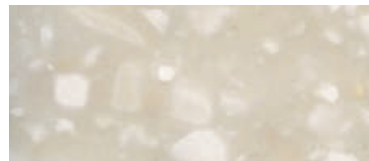


Linen

## GROUP GRADE B

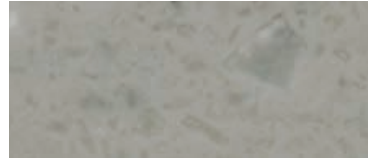


Antarctica



Savannah

## GROUP GRADE C



Dove



Deep Night Sky



# Zola

## Environmental

The use of recycled and recyclable materials, combined with environmentally-friendly production processes and packaging, have made Zola a level™-certified product, and a contributor to LEED™-driven specifications. Zola is certified by the Greenguard™ standard for indoor air emissions, and it's unique capability for extending product life makes it a responsible environmental choice - and one that will provide exceptional return on investment over time.





All products are air emissions certified and are available as FSC® certified

# krug

solutions@krug.ca | www.krug.ca | 1.888.578.KRUG