

Ascend Recliners



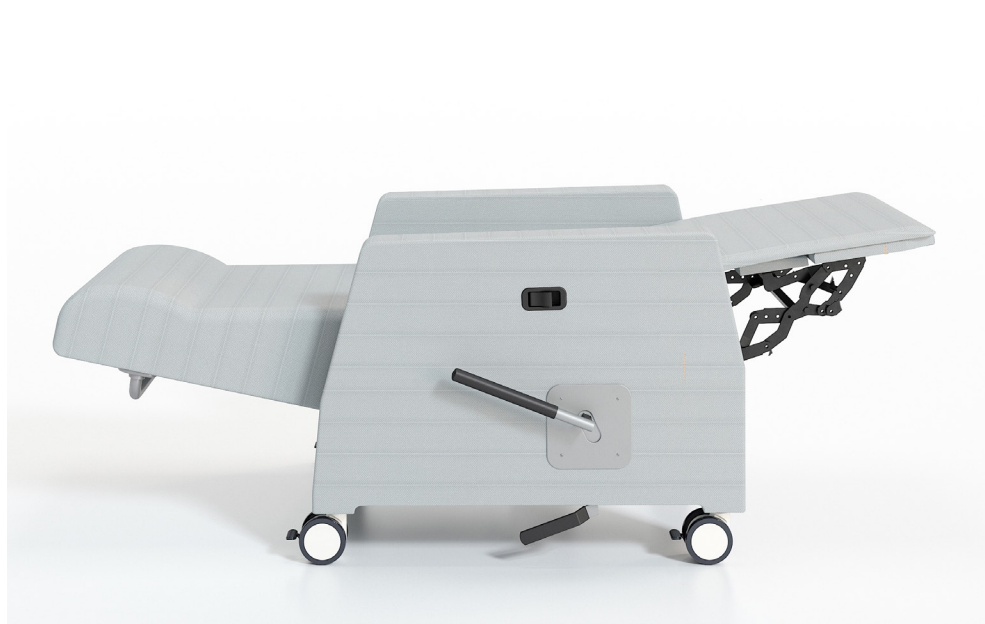
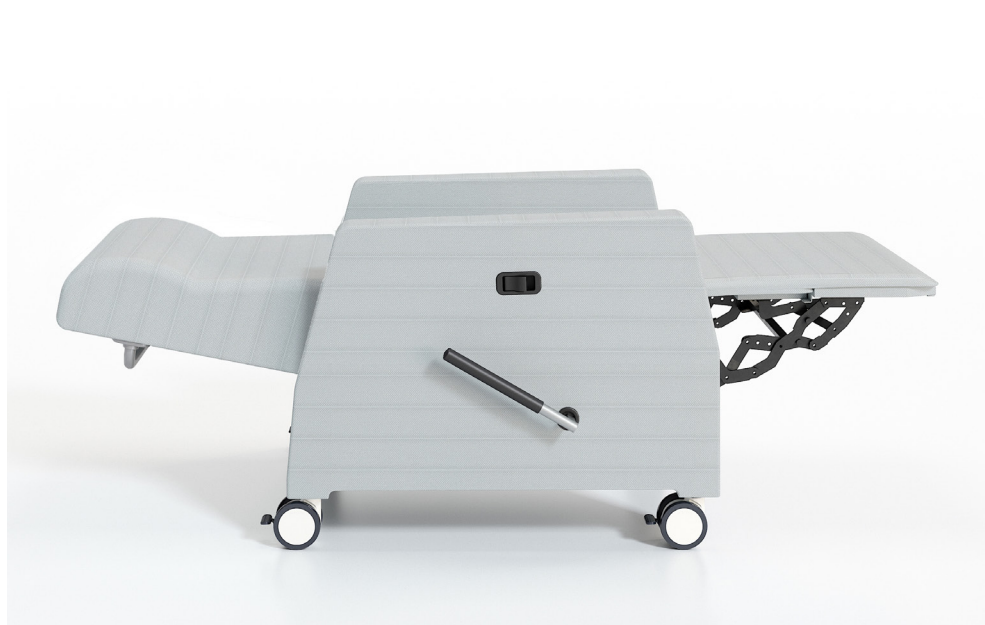
NIGHTINGALE
AWARDS
2025 
Innovation Award

Ascend

3 Position Recliner

The Ascend 3 Position Recliner is designed for general use in a variety of healthcare settings. The back and footrest are adjusted with the body weight of the patient or with help from a caregiver. Standard features include a heavy-duty mechanism, spring seat construction, dual density foam, integrated lumbar and thoracic support, 4" dual wheel casters, ergonomic push bar and 400 lb. dynamic weight rating.





Ascend Sleep Recliner

The Ascend Sleep Recliner features independent mechanisms for the back recline and footrest elevation. The infinite back positioning allows the patient to recline from sitting to a full sleep position. Standard features include a heavy-duty mechanism, spring seat construction, dual density foam, integrated lumbar and thoracic support, 4" dual wheel casters, ergonomic push bar and 750 lb. dynamic weight rating.

Ascend Recliner Plus

The Ascend Plus Recliner features independent mechanisms for the back recline and footrest elevation. The infinite back positioning allows the patient to recline from sitting to a full sleep position. Standard features include a heavy-duty mechanism, spring seat construction, dual density foam, integrated lumbar and thoracic support, 4 inch dual wheel casters, ergonomic push bar and 750 lb. dynamic weight rating.





**NIGHTINGALE
AWARDS
2025** 
Innovation Award

Wireless Patient Monitoring Technology

Ascend Recliners are available with award-winning wireless patient monitoring technology that remotely sends patient vitals data via a device installed in the back directly to the nurse station- enabling the care team to quickly intervene if a patient is in distress. The technology is FDA approved and HIPPA compliant. Ideal for Waiting Areas, Emergency Departments, Skilled Nursing Units, Acute-Care Hospitals and Post-Surgical Rehabilitation Hospitals.



UPHOLSTERED ARM

All Recliners feature fully upholstered arms, available with the option of being trimmed with polymer arm caps, urethane arm caps or solid surface arm caps.



SPRING SEAT CONSTRUCTION

The structural seat frame is made from welded steel with a powder-coated finish that allows Solis to well exceed ANSI/BIFMA standards. Rounded arms provide support for safe and easy ingress and egress.



HIGH DURABILITY MECHANISM

Ascend mechanisms are designed for high-traffic, intensive use in care-giving environments. They are built with high-strength steel, and include Delrin™ wear pads between moving components for added smoothness and longevity.



PUSH BAR

Ergonomically designed to assist care-giving staff in the movement and operation of the recliner, as well as promote reduced back strain on the care-giver.



CONTINUOUS FOOTREST COVER

The fixed continuous footrest cover provides an easily cleanable surface. It also provides additional safety when in the upright position. Seat and cover can be replaced if worn or degraded.



CASTERS

4" dual wheel locking swivel casters provide quiet and smooth motion when moving Ascend Recliner Plus. The lock feature locks both the wheel and swivel.



CLEANING & INFECTION CONTROL

Specifically designed to ease the cleaning and disinfection of the recliner and the floor underneath. Upholstery covers can be made removable, and individual components are automatically removed, to enable thorough cleaning and disinfection.



REPLACEABLE COMPONENTS

Ascend recliners are designed to allow virtually all major components to be field replaced, providing a very cost effective means to significantly extend the life of the product. Seats, backs, arms, frames and casters are field replaceable.



ARM CAPS

Optional arm caps provide enhanced durability and protection and are field replaceable if damaged or degraded. Polymer & urethane arm caps are Grey. Solid Surface is available in 8 finishes.



PROFILE ARM

Profile Arm features a recess under the armrest and inset profile to aid in ingress/egress and serve as a grab rail to assist the patient during transfer. The Profile Arm provides enhanced durability and protection and is field replaceable.



POWER CONTROL

Motorized recline is available on all Ascend Recliners. This features independent back/ottoman control. Power can also be specified with a lithium battery pack able to run 200 cycles on a full charge.



PATIENT TRANSFER ARM

Patient Transfer Arms are designed to fold down where the arm is level with the chair seat. This design allows the caregiver to move the patient from the recliner to a bed, or other transport.



TRENDELENBURG MECHANISM

This mechanism provides the added position: full recline with footrest fully extended, seat-back angle at 125 degrees, back 65 degrees from vertical - resulting in the feet being above the head. It is activated by a foot-release lever that is accessible from either side of the recliner.



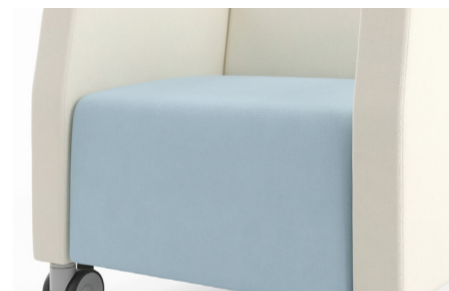
THERMAL COMFORT

Providing warmth to patients undergoing chemotherapy and other treatments can be vitally important. This option features a hand-held controller located on the inside arm of the recliner and provides two independently controlled heat zones: one in the seat and one in the back.



CENTRAL CASTER LOCKING SYSTEM

Allows for single action locking of all four casters at one time. Casters are locked both directionally and rotationally, keeping the recliner in place when locked. Central locking casters are 4" diameter with soft wheel treads.



COMBINATION UPHOLSTERY

Combination upholstery option includes more than one upholstery cover within the same unit. Back, Seat, and arm can be specified in a different fabric selection.



SWING AWAY TABLET

The tablet has the ability to slide up and fold over and rotate 180°. The break-away design allows for the tablet to be pushed away from the patient quickly in case of an emergency. Tablets cannot mount to Patient Transfer Arms.



FLIP UP TABLET

The tablet is 18" x 14" x 3/4", and it can be located on either side of the recliner. Please clearly specify whether a right-handed or left-handed position (facing) is needed when ordering. It is available Laminate with a Polymer edge. It folds flat (protruding 3" from the side of the recliner when flat). Tablets cannot mount to Patient Transfer Arms.



FOLEY HOOK

This recessed, retractable hook system provides a mounting system for catheter bags. It is spring-loaded to automatically retract when not in use, to eliminate any hazard. It can be located on either the left or right side (facing) at the front of the recliner. Opposite to Flip up Tablet or Patient Transfer Arm.



FOOT TRAY

This option provides a concealed, pull-out tray to assist patients with ingress and egress. It features a non-slip tread and dedicated casters that prevent tipping when standing on the tray.



IV POLE & HOLDER

The Ascend Recliner IV pole is height adjustable and can be added in the field. It can be located on either the left or right side (facing) at the back of the recliner. The location must be specified at time of order.



POWERDOC

The pop-up PowerDoc offers convenient power and USB charging access on demand. Flush with the arm when closed and pops open with a simple touch to the cover. Located at the rear of the arm, opposite side of recliner controls. Includes a Hospital grade electrical outlet rated 15A/125VAC and a dual USB charger for USB powered devices.



Upholstered Arm



Urethane/Polymer Arm Cap



Solid Surface Arm Cap



Pivot Arm



Polymer Profile Arm



Solid Surface Profile Arm

Ascend Environmental

The use of recycled and recyclable materials, combined with environmentally-friendly production processes and packaging, have made Ascend a level™-certified product, and a contributor to LEED™-driven specifications. Ascend is certified by the Greenguard™ standard for indoor air emissions, and it's unique capability for extending product life makes it a responsible environmental choice - and one that will provide exceptional return on investment over time.



All products are air emissions certified and are available as FSC® certified



krug HEALTHCARE 

solutions@krug.ca | www.krug.ca | 1.888.578.KRUG