

C5



krug

C5 Line-up

Sleek and contemporary, C5 is lightly scaled, easy to move within, yet plush and comfortable. For those who appreciate the warmth, back support and ergonomic properties provided by contoured upholstery and dual-density cushioning, C5 is an ideal solution. Designed for both desk and conferencing applications, its been engineered to achieve an optimal balance between light scale and sitting comfort.





C5's range of options means that many different seating solutions can be created within this offering: three mechanism options, two back heights, four arm options, and three upholstery styles (in an unlimited range of textiles) make this an extremely versatile product, allowing individualized chairs to be created within a common platform.





C5

Highly-skilled workmanship in its sewing and upholstery details give C5 the look and feel of custom-made seating, and long-lasting durability. The contoured waterfall front of the seat reduces muscle fatigue in the legs of the sitter - just one of the many contours that have been carefully shaped according to ergonomic principles, to make C5 a chair the user will enjoy and appreciate, for both brief and extended periods of sitting.

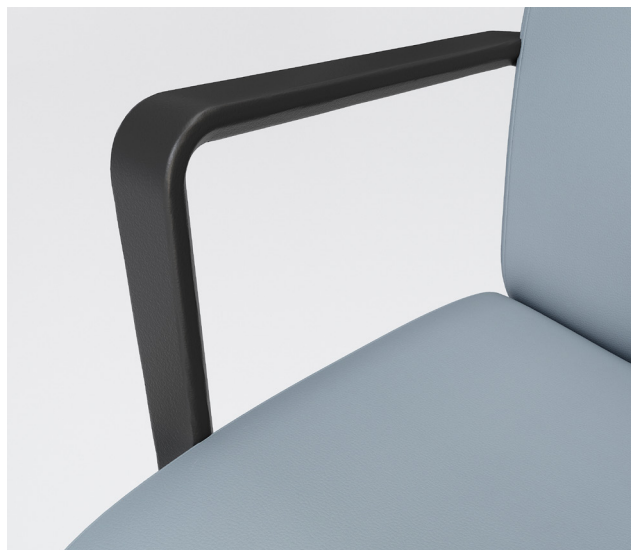
C5 Arm Styles



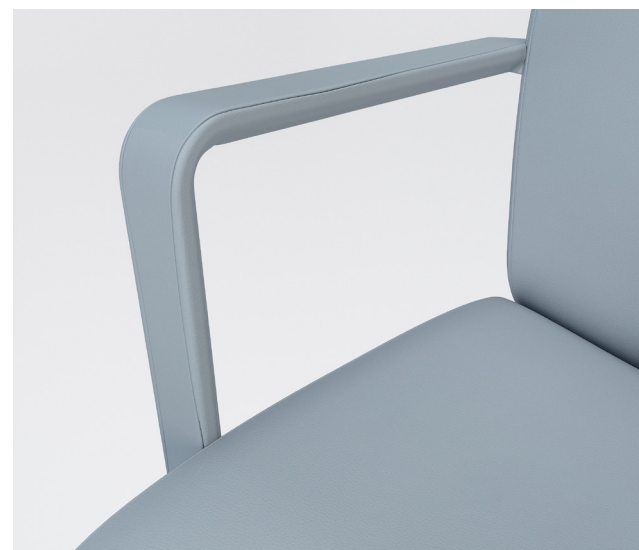
Polished Aluminum Arm with Polymer Pad



Polished Aluminum Arm with Upholstered Pad



Black Polymer Arm



Fully Upholstered



C5 Environmental

The use of recycled and recyclable materials, combined with environmentally-friendly production processes and packaging, have made C5 a level™-certified product, and a contributor to LEED™-driven specifications. C5 is certified by the Greenguard™ standard for indoor air emissions, and it's unique capability for extending product life makes it a responsible environmental choice - and one that will provide exceptional return on investment over time.

C5 Features & Options



SWIVEL-TILT MECHANISM
Provides excellent value, durability and simplicity: forward and backward tilt, tilt lock, and 360 degree swivel, as well as vertical adjustment. Right side activated tension control. Available in Black only.



JURY BASE
The C5 series is available with a jury base. Jury base assembly consists of a black 9" diameter conical/cast base for permanently mounting a chair to the floor. Into the base is inserted a black pneumatic gas cylinder with self returning action from rotation, and self returning height feature when exiting the chair. Allows for full 360 degree rotation.



KNEE TILT MECHANISM
Right side activated tension control and vertical adjustment. Left side 4 position activated tilt lock. Available in Black powder-coat or Polished Aluminum.



SEAT COMFORT
The C5 chair's seat has been carefully researched and shaped to provide extended sitting comfort, with a foam density that provides an optimal combination of softness and firmness.



POLISHED ALUMINUM BASE



BLACK NYLON BASE



REPLACEABLE COMPONENTS
C5 chairs are uniquely designed to allow virtually all major components to be field replaced, providing a very cost effective means to significantly extend the life of the product. Seats, backs, mechanisms, arms, base and casters are field replaceable.



COMBINATION UPHOLSTERY
Combination upholstery option includes more than one upholstery cover within the same unit. Back and Seat can each be specified in a different fabric selection.

C5 Statement of Line

C5 Executive Mid Back



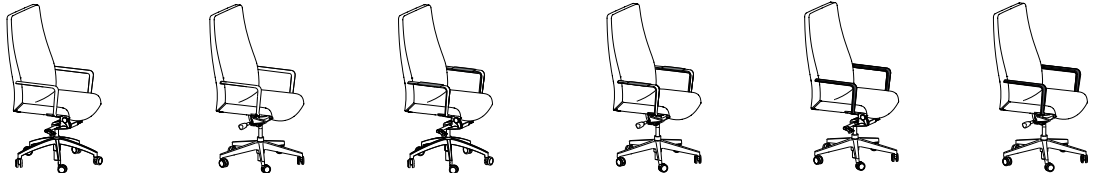
C5 Executive High Back



C5 Contemporary Mid Back



C5 Contemporary High Back



C5 Pulls Mid Back



C5 Pulls High Back





All products are air emissions certified and are available as FSC® certified

krug

solutions@krug.ca | www.krug.ca | 1.888.578.KRUG