

C5
Price and Specification Guide
USA



krug

Advancing Design Through Innovation

C5 | TABLE OF CONTENTS

C5

- 2 C5 LEED Credit Summary
- 3 C5 Features & Options
- 4 C5 Dimensions & COM
- 5 C5 Pricing

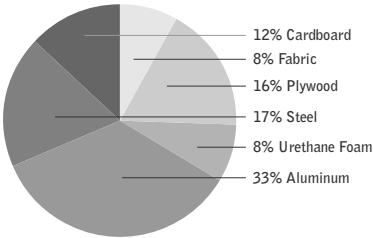
GENERAL INFORMATION

- 11 Terms & Conditions
- 11 Warranty
- 13 KRUG Textiles - Upholstery Fabrics
- 14 KRUG Textiles - Leather & Faux Leather
- 14 Graded-In Upholstery Programs
- 15 Customer's Own Material (COM/COL)
- 15 CAL 133 & Moisture Barrier
- 16 *KRUGEXPRESS* Program
- 16 Base Styles

LEED CI CREDITS



MATERIAL CONTENT:



PRE-CONSUMER
RECYCLED CONTENT = 24.5%

POST-CONSUMER
RECYCLED CONTENT = 19.4%

Up to 60.1% of this C5 product is recyclable at the end of its useful life.

CONTRIBUTES TO

CREDIT 2.1 - 2.2	Construction Waste Management	1-2 point(s)
CREDIT 3.3	Resource Reuse	1 point
CREDIT 4.1	Recycled Content	1 point
CREDIT 4.2	Recycled Content	1 point
CREDIT 4.5	Low Emitting Materials, Systems & Seating	1 point
CREDIT 5.1	Regional Materials*	1 point
CREDIT 7	Certified Wood (MUST BE REQUESTED)	1 point(s)

*This credit is only applicable if in total 20% of the combined value of the procurement of construction materials and in the furniture are manufactured within a radius of 500 miles. This credit will apply if the installation of the finished product occurs within 500 miles of Kitchener, Ontario.

level® CERTIFICATION, AIR EMISSIONS AND FSC® CERTIFICATION



level® CERTIFICATION

BIFMA's e3 Furniture Sustainability Standard is a voluntary, multi-attribute standard that measures the degree of sustainability of furniture. This standard evaluates product and company environmental attributes and compliance systems in a wide range of elements which include Materials, Energy & Atmosphere, Human & Ecosystem Health and Social Responsibility. C5 products have earned level®, BIFMA's sustainability certification program for furniture, certification through third-party verification against the e3 standard.



AIR-EMISSIONS

All C5 products are supplied with air-emissions certified. Contact customer service for information.

FSC®

In 2005, Krug received Forest Stewardship Council® (FSC®) Chain-of-Custody certification for our manufacturing facilities. The FSC® Chain-of-Custody tracks certified wood from seedling to final sale. It verifies that the material for our FSC® certified products only come from well-managed, FSC®-certified forests and other controlled sources. FSC® is dedicated to the promotion of responsible forest management worldwide helping to take care of forests for future generations. C5 and other Krug products can be specified with FSC® Certification. Contact customer service for further information, pricing and lead times.



Architects, designers, and building professionals can specify FSC®-certified products in order to achieve a point from the US. Green Building Council's Leadership in Energy and Environmental Design (LEED) Rating System.

C5 | FEATURES & OPTIONS

ARM STYLES

C5 features four styles of fixed arms; polished aluminum with polymer pad, polished aluminum with upholstered pad, full black polymer arm, and fully upholstered arm.



Polished Aluminum Arm with Polymer Pad



Polished Aluminum Arm with Upholstered Pad



Black Polymer Arm



Fully Upholstered - Leather or Fabric wrapped upholstered arm with detailed top stitching.



MECHANISM OPTIONS

Swivel-Tilt - Provides excellent value, durability and simplicity: forward and backward tilt, tilt lock, and 360 degree swivel, as well as vertical adjustment. Right side activated tension control. Available in Black only.



Knee Tilt - Right side activated tension control and vertical adjustment. Left side 4 position activated tilt lock. Available in Black powdercoat or Polished Aluminum.

BASE STYLES

C5 seating is available in two base options. Choose from a black nylon, or a polished aluminum.



Polished Aluminum



Black Glass Reinforced Nylon



Jury Base

The C5 series is available with a jury base. Jury base assembly consists of a black 9" diameter conical/cast base for permanently mounting a chair to the floor. Into the base is inserted a black pneumatic gas cylinder with self returning action from rotation, and self returning height feature when exiting the chair. Allows for full 360 degree rotation. Limited degrees of rotation are not available.

SEAT

The seat has been carefully researched and shaped to provide extended sitting comfort, with a foam density that provides an optimal combination of softness and firmness.

REPLACEABLE COMPONENTS

C5 chairs are uniquely designed to allow virtually all major components to be field replaced, providing a very cost effective means to significantly extend the life of the product. Seats, backs, mechanisms, arms, base and casters are field replaceable.

OPTIONS

COMBINATION UPHOLSTERY OPTION

When combination upholstery is specified with fabric of the same grade or COM, an upcharge for dual fabrics is **\$32 list** per unit will be applied. When graded in combination upholstery is selected, use the highest grade upholstery selected or to obtain a quote for blended grading contact Customer Service (please provide the fabrics specified and location of where each fabric is to be applied on the product).

CAL 133 & MOISTURE BARRIER

California Technical Bulletin 133 is a flammability test for seating. Krug offers a compliance method which, in combination with non-flammable upholstery covers, may enable the products to meet certification requirements for this test. This process at the same time also provides the products with a Moisture Barrier - a treatment that helps to prevent the passage of liquids and moisture to inside of upholstered components - thereby conferring sanitary and anti-infection benefits. So when CAL 133 is specified, the product also automatically has a Moisture Barrier, and when a Moisture Barrier is specified, the product also features the compliance method and low flammability features of CAL 133.

The application of this upcharge and the compliance method does not mean that the specific configuration of product and upholstery cover are tested and officially certified as being CAL 133 compliant. If official certification is required, Krug will provide this (through an independent certified testing laboratory) at a charge of \$874 per item, plus the cost of the product to be tested. Lead time for certification testing is typically 4-8 weeks. Krug assumes no responsibility for the testing of our products in combination with upholstery covers, or for the results of any testing conducted. Some specific configurations of product and upholstery have already been tested. Please contact Customer Service for additional information.

C5 | DIMENSIONS & COM REQUIREMENTS

	Overall Width	Overall Depth	Overall Height	Seat Height min/max	Height of Arms from Floor	Width between Arms	Seat Depth	Shipping Weight	Cube	COM Yardage
Mid Back										
Polished Aluminum Arm with Polymer pad	25	23.8	43.9	18.9 - 22.8	26.5 - 30.4	21	17.8	43	17.4	1.7
Polished Aluminum Arm with Uph. Pad	25	23.8	43.9	18.9 - 22.8	26.5 - 30.4	21	17.8	43	17.4	1.9
Black Polymer Arm	25	23.8	43.9	18.9 - 22.8	26.5 - 30.4	21	17.8	43	17.4	1.7
Upholstered Arm	25	23.8	43.9	18.9 - 22.8	26.5 - 30.4	21	17.8	43	17.4	2.5
High Back										
Polished Aluminum Arm with Polymer Pad	25	23.8	49.9	18.9 - 22.8	26.5 - 30.4	21	17.8	46	20.0	2.1
Polished Aluminum Arm with Uph. Pad	25	23.8	49.9	18.9 - 22.8	26.5 - 30.4	21	17.8	46	20.0	2.3
Black Polymer Arm	25	23.8	49.9	18.9 - 22.8	26.5 - 30.4	21	17.8	46	20.0	2.1
Upholstered Arm	25	23.8	49.9	18.9 - 22.8	26.5 - 30.4	21	17.8	46	20.0	2.9

MULTIPLE YARDAGE REQUIREMENTS

	Yardage Seat & Back Rest	Yardage Seat only	Yardage Back rest only	Yardage Upholstered Arm Pad (2)	Yardage Full Upholstered Arm (2)
Mid Back					
1 Chair	1.7	.9	1.5	.19	.8
2 Chairs	3.3	1.14	2.4	.19	1.06
3 Chairs	5	2.04	3.2	.19	1.5
4 Chairs	6.6	2.28	4	.19	2.19
High Back					
1 Chair	2.1	.9	1.95	.19	.8
2 Chairs	3.4	1.14	3.1	.19	1.06
3 Chairs	5.5	2.04	4.2	.19	1.5
4 Chairs	7.4	2.28	5.8	.19	2.19

DIMENSIONS:

Height measurements of C5 tilter are taken with the pneumatic lift in the lowest position and with a standard height range gas lift. All dimensions are in inches and approximate and are subject to change without notice. Contact Customer Service if dimensions are critical.

COM APPROVAL PROCESS:

The approval process is as follows:

1. A sample of the COM fabric must be provided to Krug Customer Service prior to or at time of order.
2. The sample will be reviewed and the customer advised if the fabric is unsuitable.
3. The COM fabric will be inspected when received at the factory to identify any further concerns with its suitability.

WEIGHT CAPACITY:

C5 has been tested to ANSI BIFMA.
C5 is load rated to 300lbs

C5 EXECUTIVE | MID BACK

DESCRIPTION/MODEL	COM		COL	FABRIC GRADES				LEATHER	
	1	2		4	5	6	7	8	9



FULLY UPHOLSTERED ARM

C5E1MB41A	1316	1379	1442	1533	1635	1724	1827	1956	2084
Polished Aluminum knee tilt, Polished Aluminum base									
C5E1MB42B	1279	1344	1409	1495	1598	1689	1791	1919	2044
Black Aluminum knee tilt, Black base									



POLISHED ALUMINUM ARM WITH POLYMER PAD

C5E1MB11A	1148	1205	1258	1338	1428	1506	1594	1707	1819
Polished Aluminum knee tilt, Polished Aluminum base									
C5E1MB12B	1113	1169	1224	1302	1392	1467	1559	1669	1781
Black Aluminum knee tilt, Black base									



BLACK POLYMER ARM

C5E1MB32B	1031	1085	1141	1253	1365	1478	1588	1698	1922
Black Aluminum knee tilt, Black base									



BLACK POLYMER ARM

C5E1MB33C	990	1044	1102	1181	1270	1349	1438	1549	1662
Black Swivel tilt, Polished Aluminum base									
C5E1MB33D	964	1018	1074	1152	1243	1320	1411	1521	1634
Black Swivel tilt, Black base									



ORDERING NOTES:
For jury base, please add a 'J' for the base style at the end of the model number and add **\$77 list**.
Hard casters are the standard and soft wheel casters can be ordered for **\$61 list** per chair. CAL 133 and Moisture Barrier options are available for an upcharge of **\$61 list per yard**.
For **UPHOLSTERED ARM PAD** on polished arm versions only select arm style 2 and add upcharge below.

1	2	3	4	5	6	7	8	9
109	115	120	130	139	148	157	170	181

PRODUCT CODE KEY

Line	Series	Back Style	Arm Style	Mechanism	Base Style
C5E C5 Executive (Horizontal Ribbed)	1 Tilter	MB Mid Back HB High Back	1 Polished Aluminum Arm with Polymer Pad 2 Polished Aluminum Arm with Uph. Pad 3 Black Polymer Arm 4 Fully Uph. Arm	1 Polished Aluminum Knee Tilt 2 Black Aluminum Knee Tilt 3 Black Swivel Tilt	A Polished Aluminum Base for Knee Tilt B Black Base for Knee Tilt C Polished Aluminum Base for Swivel Tilt D Black Base for Swivel Tilt J Jury Base

C5 EXECUTIVE | HIGH BACK

DESCRIPTION/MODEL	COM 1	2	COL 3	FABRIC GRADES 4	5	6	7	LEATHER 8	9
-------------------	----------	---	----------	--------------------	---	---	---	--------------	---



FULLY UPHOLSTERED ARM									
C5E1HB41A	1365	1437	1509	1609	1723	1824	1939	2084	2228
Polished Aluminum knee tilt, Polished Aluminum base									
C5E1HB42B	1327	1399	1472	1573	1688	1789	1903	2045	2190
Black Aluminum knee tilt, Black base									



POLISHED ALUMINUM ARM WITH POLYMER PAD									
C5E1HB11A	1198	1258	1324	1413	1517	1606	1707	1836	1963
Polished Aluminum knee tilt, Polished Aluminum base									
C5E1HB12B	1160	1224	1290	1378	1481	1568	1670	1798	1927
Black Aluminum knee tilt, Black base									



BLACK POLYMER ARM									
C5E1HB32B	1080	1141	1206	1294	1396	1486	1588	1717	1843
Black Aluminum knee tilt, Black base									



BLACK POLYMER ARM									
C5E1HB33C	1039	1103	1168	1256	1358	1447	1552	1680	1806
Black Swivel tilt, Polished Aluminum base									
C5E1HB33D	1012	1074	1140	1228	1330	1421	1521	1650	1778
Black Swivel tilt, Black base									



ORDERING NOTES:
 For jury base, please add a 'J' for the base style at the end of the model number and add **\$77 list**.
 Hard casters are the standard and soft wheel casters can be ordered for **\$61 list** per chair. CAL 133 and Moisture Barrier options are available for an upcharge of **\$61 list per yard**.
 For **UPHOLSTERED ARM PAD** on polished arm versions only select arm style 2 and add upcharge below.

1	2	3	4	5	6	7	8	9
109	115	120	130	139	148	157	170	181

PRODUCT CODE KEY

Line	Series	Back Style	Arm Style	Mechanism	Base Style
C5E C5 Executive (Horizontal Ribbed)	1 Tilter	MB Mid Back	1 Polished Aluminum Arm with Polymer Pad	1 Polished Aluminum Knee Tilt	A Polished Aluminum Base for Knee Tilt
		HB High Back	2 Polished Aluminum Arm with Uph. Pad	2 Black Aluminum Knee Tilt	B Black Base for Knee Tilt
			3 Black Polymer Arm	3 Black Swivel Tilt	C Polished Aluminum Base for Swivel Tilt
			4 Fully Uph. Arm		D Black Base for Swivel Tilt
					J Jury Base

C5 CONTEMPORARY | MID BACK

DESCRIPTION/MODEL	COM		COL		FABRIC GRADES			LEATHER	
	1	2	3	4	5	6	7	8	9



FULLY UPHOLSTERED ARM

C5C1MB41A	1186	1252	1315	1407	1508	1594	1697	1827	1956
Polished Aluminum knee tilt, Polished Aluminum base									
C5C1MB42B	1159	1223	1287	1377	1481	1567	1669	1797	1924
Black Aluminum knee tilt, Black base									



POLISHED ALUMINUM ARM WITH POLYMER PAD

C5C1MB11A	1018	1074	1131	1210	1297	1378	1465	1580	1690
Polished Aluminum knee tilt, Polished Aluminum base									
C5C1MB12B	993	1046	1103	1181	1271	1349	1439	1552	1663
Black Aluminum knee tilt, Black base									



BLACK POLYMER ARM

C5C1MB32B	899	956	1012	1089	1180	1257	1348	1460	1569
Black Aluminum knee tilt, Black base									



BLACK POLYMER ARM

C5C1MB33C	863	917	974	1054	1142	1221	1311	1422	1534
Black Swivel tilt, Polished Aluminum base									
C5C1MB33D	834	890	945	1023	1114	1193	1282	1394	1506
Black Swivel tilt, Black base									



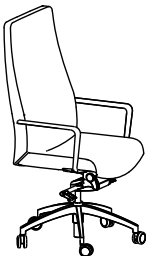




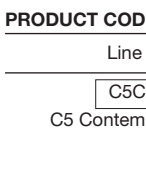
ORDERING NOTES:
For jury base, please add a ‘J’ for the base style at the end of the model number and add **\$77 list**.
Hard casters are the standard and soft wheel casters can be ordered for **\$61 list** per chair. CAL 133 and Moisture Barrier options are available for an upcharge of **\$61 list per yard**.
For **UPHOLSTERED ARM PAD** on polished arm versions only select arm style 2 and add upcharge below.

1	2	3	4	5	6	7	8	9
109	115	120	130	139	148	157	170	181

PRODUCT CODE KEY

Line	Series	Back Style	Arm Style	Mechanism	Base Style
<div>C5C</div> <div>C5 Contemporary</div>	<div>1</div> <div>Tilter</div>	<div>MB</div> <div>Mid Back</div> <div>HB</div> <div>High Back</div>	<div>1</div> <div>Polished Aluminum Arm with Polymer Pad</div> <div>2</div> <div>Polished Aluminum Arm with Uph. Pad</div> <div>3</div> <div>Black Polymer Arm</div> <div>4</div> <div>Fully Uph. Arm</div>	<div>1</div> <div>Polished Aluminum Knee Tilt</div> <div>2</div> <div>Black Aluminum Knee Tilt</div> <div>3</div> <div>Black Swivel Tilt</div>	<div>A</div> <div>Polished Aluminum Base for Knee Tilt</div> <div>B</div> <div>Black Base for Knee Tilt</div> <div>C</div> <div>Polished Aluminum Base for Swivel Tilt</div> <div>D</div> <div>Black Base for Swivel Tilt</div> <div>J</div> <div>Jury Base</div>

C5 CONTEMPORARY | HIGH BACK

DESCRIPTION/MODEL	COM		COL	FABRIC GRADES			LEATHER			
	1	2	3	4	5	6	7	8	9	
	FULLY UPHOLSTERED ARM									
	C5C1HB41A	1231	1304	1375	1475	1590	1692	1806	1949	2092
	Polished Aluminum knee tilt, Polished Aluminum base									
	C5C1HB42B	1203	1273	1348	1447	1562	1663	1778	1922	2065
	Black Aluminum knee tilt, Black base									
	POLISHED ALUMINUM ARM WITH POLYMER PAD									
	C5C1HB11A	064	1127	1192	1282	1383	1472	1575	1703	1831
	Polished Aluminum knee tilt, Polished Aluminum base									
	C5C1HB12B	1036	1099	1165	1253	1354	1443	1546	1673	1802
Black Aluminum knee tilt, Black base										
	BLACK POLYMER ARM									
	C5C1HB32B	943	1009	1071	1160	1265	1353	1456	1583	1711
	Black Aluminum knee tilt, Black base									
	BLACK POLYMER ARM									
	C5C1HB33C	908	970	1036	1123	1225	1316	1417	1545	1672
	Black Swivel tilt, Polished Aluminum base									
	C5C1HB33D	879	941	1008	1095	1199	1287	1389	1517	1646
	Black Swivel tilt, Black base									
	ORDERING NOTES: For jury base, please add a 'J' for the base style at the end of the model number and add \$77 list . Hard casters are the standard and soft wheel casters can be ordered for \$61 list per chair. CAL 133 and Moisture Barrier options are available for an upcharge of \$61 list per yard . For UPHOLSTERED ARM PAD on polished arm versions only select arm style 2 and add upcharge below.									
	1	2	3	4	5	6	7	8	9	
	109	115	120	130	139	148	157	170	181	

PRODUCT CODE KEY

Line	Series	Back Style	Arm Style	Mechanism	Base Style
C5C	1	MB	1	1	A
C5 Contemporary	Tilter	Mid Back	Polished Aluminum Arm with Polymer Pad	Polished Aluminum Knee Tilt	Polished Aluminum Base for Knee Tilt
		HB	2	2	B
		High Back	Polished Aluminum Arm with Uph. Pad	Black Aluminum Knee Tilt	Black Base for Knee Tilt
			3	3	C
			Black Polymer Arm	Black Swivel Tilt	Polished Aluminum Base for Swivel Tilt
			4		D
			Fully Uph. Arm		Black Base for Swivel Tilt
					J
					Jury Base

C5 PULLS | MID BACK

DESCRIPTION/MODEL	COM		COL	FABRIC GRADES			LEATHER		
	1	2		4	5	6	7	8	9



FULLY UPHOLSTERED ARM

C5P1MB41A	1207	1271	1336	1424	1527	1615	1719	1846	1974
Polished Aluminum knee tilt, Polished Aluminum base									
C5P1MB42B	1171	1234	1297	1387	1491	1581	1683	1809	1938
Black Aluminum knee tilt, Black base									



POLISHED ALUMINUM ARM WITH POLYMER PAD

C5P1MB11A	1039	1095	1150	1229	1319	1397	1486	1598	1711
Polished Aluminum knee tilt, Polished Aluminum base									
C5P1MB12B	1004	1059	1115	1194	1283	1361	1452	1562	1673
Black Aluminum knee tilt, Black base									



BLACK POLYMER ARM

C5P1MB32B	918	978	1033	1111	1200	1279	1369	1481	1590
Black Aluminum knee tilt, Black base									



BLACK POLYMER ARM

C5P1MB33C	884	939	995	1071	1164	1241	1329	1441	1555
Black Swivel tilt, Polished Aluminum base									
C5P1MB33D	854	911	967	1043	1136	1212	1302	1413	1525
Black Swivel tilt, Black base									



ORDERING NOTES:
For jury base, please add a 'J' for the base style at the end of the model number and add **\$77 list**.
Hard casters are the standard and soft wheel casters can be ordered for **\$61 list** per chair. CAL 133 and Moisture Barrier options are available for an upcharge of **\$61 list per yard**.
For **UPHOLSTERED ARM PAD** on polished arm versions only select arm style 2 and add upcharge below.

1	2	3	4	5	6	7	8	9
109	115	120	130	139	148	157	170	181

PRODUCT CODE KEY

Line	Series	Back Style	Arm Style	Mechanism	Base Style
<div>C5P</div> <div>C5 Pulls</div>	<div>1</div> <div>Tilter</div>	<div>MB</div> <div>Mid Back</div> <div>HB</div> <div>High Back</div>	<div>1</div> <div>Polished Aluminum Arm with Polymer Pad</div> <div>2</div> <div>Polished Aluminum Arm with Uph. Pad</div> <div>3</div> <div>Black Polymer Arm</div> <div>4</div> <div>Fully Uph. Arm</div>	<div>1</div> <div>Polished Aluminum Knee Tilt</div> <div>2</div> <div>Black Aluminum Knee Tilt</div> <div>3</div> <div>Black Swivel Tilt</div>	<div>A</div> <div>Polished Aluminum Base for Knee Tilt</div> <div>B</div> <div>Black Base for Knee Tilt</div> <div>C</div> <div>Polished Aluminum Base for Swivel Tilt</div> <div>D</div> <div>Black Base for Swivel Tilt</div> <div>J</div> <div>Jury Base</div>

C5 PULLS | HIGH BACK

DESCRIPTION/MODEL	COM 1	2	COL 3	4	FABRIC GRADES 5	6	7	LEATHER 8	9
-------------------	----------	---	----------	---	--------------------	---	---	--------------	---



FULLY UPHOLSTERED ARM

C5P1HB41A	1260	1332	1407	1506	1622	1722	1836	1980	2123
Polished Aluminum knee tilt, Polished Aluminum base									
C5P1HB42B	1225	1296	1370	1467	1584	1685	1800	1943	2088
Black Aluminum knee tilt, Black base									



POLISHED ALUMINUM ARM WITH POLYMER PAD

C5P1HB11A	1093	1158	1222	1311	1413	1503	1605	1732	1861
Polished Aluminum knee tilt, Polished Aluminum base									
C5P1HB12B	1058	1121	1185	1273	1377	1465	1567	1695	1823
Black Aluminum knee tilt, Black base									



BLACK POLYMER ARM

C5P1HB32B	974	1038	1102	1192	1293	1383	1485	1612	1740
Black Aluminum knee tilt, Black base									



BLACK POLYMER ARM

C5P1HB33C	917	982	1044	1137	1240	1327	1430	1557	1687
Black Swivel tilt, Polished Aluminum base									
C5P1HB33D	890	955	1016	1109	1210	1297	1403	1530	1659
Black Swivel tilt, Black base									

ORDERING NOTES:

For jury base, please add a 'J' for the base style at the end of the model number and add **\$77 list**.
 Hard casters are the standard and soft wheel casters can be ordered for **\$61 list** per chair. CAL 133 and Moisture Barrier options are available for an upcharge of **\$61 list per yard**.
 For **UPHOLSTERED ARM PAD** on polished arm versions only select arm style 2 and add upcharge below.



PRODUCT CODE KEY	1	2	3	4	5	6	7	8	9
	109	115	120	130	139	148	157	170	181

Line	Series	Back Style	Arm Style	Mechanism	Base Style
C5P C5 Pulls	1 Tilter	MB Mid Back	1 Polished Aluminum Arm with Polymer Pad	1 Polished Aluminum Knee Tilt	A Polished Aluminum Base for Knee Tilt
		HB High Back	2 Polished Aluminum Arm with Uph. Pad	2 Black Aluminum Knee Tilt	B Black Base for Knee Tilt
			3 Black Polymer Arm	3 Black Swivel Tilt	C Polished Aluminum Base for Swivel Tilt
			4 Fully Uph. Arm		D Black Base for Swivel Tilt
					J Jury Base

GENERAL INFORMATION

Terms and Conditions

Net 30 days on approved credit. A late payment charge of 1% per month will be applied on overdue invoices. This charge will be pro-rated to the number of days past 30 days that the invoice is overdue. All applicable sales taxes are extra. Distribution of this price list does not in itself constitute an offer to sell. Orders can be received only from authorized Krug dealers. Acceptance of any order and terms of sale may be established at the discretion of Krug. Deposits are required on orders received from new accounts as well as on large or special orders. Krug reserves the right to discontinue designs, or to change designs, construction, prices, or materials without notice.

Contact Information

Phone: 1.888.578.KRUG (5784) | Fax: 1.519.748.5177

Purchase Order Fax: 1.888.236.4783

Purchase Order E-mail: orders@krug.ca

Web: www.krug.ca E-mail: solutions@krug.ca

Customer Service Hours

Please note customer service hours are:

8:30 am to 5:00 pm est

Customer Satisfaction

It is the primary goal of Krug and our staff to ensure the complete satisfaction of our customers with our products and performance. If a problem arises with a Krug product after the expiration of the limited warranty period, Krug will exercise its best efforts to achieve the satisfaction of the customer in a manner that is fair to all concerned.

Order Acknowledgments

Each order will be acknowledged via e-mail or fax. This acknowledgment is the final agreement between Krug and the customer, superseding all previous communications regarding the purchase order. Where there is a discrepancy on a purchase order between a product code and a description, Krug will make every effort to resolve the discrepancy, but will be ruled by the product code ordered. Please check all acknowledgments for accuracy, and advise Krug of any discrepancies with a purchase order.

Order Cancellation

Krug reserves the right to not accept or allow cancellation of orders. All products are manufactured on a custom-made, make-to-order basis, and the purchasing, engineering and production of orders begins shortly after order placement - and the customer purchase order is a contract that authorizes Krug to manufacture the products. Acceptance of order cancellation (or partial cancellation) is solely at the discretion of Krug, and is dependent on the extent to which engineering, purchasing and manufacturing has been initiated by the time cancellation is requested. No order cancellations (partial or otherwise) are allowable more than 4 weeks from date of order placement (as order production is unable to be terminated by that point), and full payment of the acknowledged order value is required for any orders cancelled after 4 weeks. Cancellations may be allowable in less than 4 weeks after order placement, depending on the extent to which manufacturing has been initiated. An acceptance of order cancellation requires that the purchaser agrees to make payment for all costs incurred to the point of acceptance of cancellation. Cancellation charges include all costs for purchase of dedicated material and components, engineering costs for non-standard products, and all costs for manufacturing completed to that point, as well as a \$367 net charge for processing of the original order and for processing of cancellation invoicing.

Pricing

Krug endeavors to ensure that all prices in this price list reflect accurately our current prices. However, errors do occur and will be rectified through notices to the field. Krug reserves the right to acknowledge pricing that may be different from the price list.

Storage Charges

Krug reserves the right to assess a nominal storage charge if a customer does not accept shipment of an order within a week of the ship date.

Warranty

Krug warrants the construction and the finish of all our products to be free from defects in materials and workmanship for a period of 10 years from the date of purchase. This warranty is applicable to products in use by their original purchaser. This warranty does not apply to components not manufactured by Krug including textiles, which are subject to the specific warranties of those manufacturers, if any. Textiles (fabric, leather, vinyl, or any other covering material) suppliers do not guarantee their products for durability and color fastness, and nor does Krug. Casters, mechanical and electrical components have a warranty of five years from the date of purchase. The Krug warranty does not apply to COM-specified materials, damage caused by a carrier other than Krug, or variation in wood finishes due to natural wood color variation. Krug cannot be held responsible for variations in fabric dye lots from order to order. All fabric is carefully inspected when it is received, but a degree of variation in color should be expected. Repairs or replacement of any defect covered under this warranty by Krug will be made, at our option and method, at no charge to the original purchaser during the warranty period. Krug's judgement is final and binding with respect to the nature or cause of defects or damage, and the necessity or manner of repair or replacement.

This warranty does not apply to defects or damage resulting from:

- normal wear and tear occurring with the use of the product
- negligence, misuse, excessive use, alteration, improper cleaning or repair
- substitution or use of incorrect or unauthorized components or material
- handling or installation that is incorrect, or that causes damage or defect
- damage incurred by a freight carrier other than Krug
- wearing of finishes and fabrics, and normal variations in materials (including dye lot variations)
- properties of natural materials, including wood and leather
- exposure to environments with uncontrolled temperature and humidity (products must be transported, stored and used in climate-controlled conditions)

Blanket Wrapping

Krug will blanket wrap larger seating orders at customer's request. Please indicate on your purchase order and contact Customer Service.

Export Packaging

Krug is pleased to provide the option for export packaging on all our products, to provide additional protection from damage. For shipments overseas, a quote for export packaging can be provided, based on the products to be ordered and the delivery destination - please contact Customer Service or Bids & Specification Support for more information and a quotation. KRUG is not responsible for shipment damage occurring on overseas shipments

Export Packaging is STRONGLY RECOMMENDED for:

- (A) all shipments outside of the lower 48 states and Canada.
- (B) all shipments that will be held in storage for an extended period prior to installation.

Important: Please note that Krug will not be responsible for damage claims on product shipped or stored in the above conditions but where export packaging has not been utilized.

Dimensions

Dimensions are in inches and approximate, and subject to change without notice. Contact Customer Service if dimensions are critical.

Installation Support

For assistance please contact Technical Support at 1-888-578-5784 x216 or e-mail installationhelp@krug.ca and you will be directed to the appropriate installation support person.

Freight Terms and Conditions

1. All product is shipped FOB the Krug factory. Freight is either pre-paid to the destination or not pre-paid, depending on established customer specific freight terms.

2. Docks at the selected delivery location must be equipped to handle a 53' trailer. If a dock is inadequate for delivery by Krug, Krug will re-deliver to another local location and any additional costs will be charged to the customer.

3. For all deliveries, it is understood that Krug or its agent is making a dock delivery only (equipped to handle a 53' trailer), and any further work of truck unloading, delivery beyond the dock, installation, and removal of packaging is not authorized or paid for by Krug.

4. Drop shipments to the installation site, and timed deliveries, are available on larger shipments (full truckloads or slightly less) at no additional charge. Drop shipments or timed deliveries for smaller shipments may not be available, or if available will require a surcharge. Deliveries on an after hours basis, or on weekends, or any other special requirements, may be subject to a surcharge. Location and contact information, and the requested time of delivery, is required at least one week prior to the acknowledged shipment date. If this information is not provided one week in advance, or if the location or time of the drop shipment is changed less than one week in advance, a surcharge may be applied, and/or the drop shipment may not be scheduled. For deliveries requested Monday to Thursday after 5:00 pm, please apply a surcharge of \$262/shipment. For deliveries requested Monday to Friday before 7:00 am, please apply a surcharge of \$262/shipment. For deliveries requested Friday (after 3:00 pm) or weekends, please apply a surcharge of \$525/shipment. (local times).

5. For all deliveries - whether to the Customer location or drop shipment - any circumstances that result in the delay of our carrier (including unsuitable receiving facilities, or facilities not open or available), service charges will be applied at the rate of \$78/hour. Where re-delivery is necessary because of these circumstances, the full cost of re-delivery will be charged. If Less Than Truck Load is delivering, one hour is allocated to unload. Any additional time required to unload after the first hour is \$78/hour. If a Truck Load is delivering the order, three hours is allocated to unload. Any additional time required to unload is \$78/hour. Direct deliveries to site for large orders are possible, (must exceed \$60,000 net), and accommodate 48 - 53' trailers. Krug is responsible for delivery to the approved delivery address. If an address change is required, this must be authorized by Krug 5 business days prior to ship date. Any additional delivery costs incurred after this time will be charged to the customer.

Product Strength and Durability Testing

All management seating meets or exceeds the testing requirements of ANSI/BIFMA X5.1-2011. All lounge seating meets or exceeds the testing requirements of FNAE-80-214A. Specific test results and documentation are available on request.



Damaged Shipments

All Krug product is well engineered, carefully inspected, and expertly loaded onto our trucks at our Distribution Center. If you receive any damaged freight, we ask that you do not refuse the shipment. Krug is not responsible for damage to goods that occurs in transit or storage. It is the purchaser and/or receiver's responsibility to examine the goods upon receipt and to notify Krug of any damages, overages or shortages. Any discrepancies should be noted on the Bill of Lading. The delivering carrier will not accept responsibility for shortages or damages if signed "clear". Notification of concealed damage claims must be made to Krug Distribution within 5 days of delivery, along with digital pictures if available. All product and packaging must be available for inspection. Krug liability ceases after 5 business days and Krug will not be responsible for concealed damages if shipments are left unopened. Krug is not responsible for the condition of product that is stored or installed in an environment where temperature and humidity are not controlled.

Field Product Report Authorization

Krug's written authorization, in the form of an FPR number, must be obtained prior to incurring charges of any kind if Krug is expected to pay these charges. This includes authorization for field repairs and replacements, installation and delivery charges. Krug reserves the right to have its representative inspect product related to any request for such authorizations, prior to that authorization being provided. Deductions from invoices paid for any charges to Krug, without prior written authorization in the form of an FPR, will not be accepted. Digital photographs may be required to complete the FPR process.

Returns

No merchandise may be returned without Krug's prior written consent. In the event of an authorized return, a Field Product Report (FPR) number will be issued, and a restocking charge will apply. Return transportation charges must be prepaid. Unauthorized returns will not be accepted and will be returned freight collect. All merchandise being returned must be properly packaged in its original or comparable replacement packaging to ensure protection of the product during handling and transportation. Returns on orders duplicated by the customer must be received in their original packaging to be accepted. Product being returned where Krug has authorized its liability for replacement or repair will be thoroughly inspected on its return, and the results compared to the reason for the return stated on the FPR. Any discrepancies, such as additional damage, signs of usage, missing parts, etc., will result in an adjustment to the amount of credit issued.

Custom Capabilities

Over 15% of our orders involve some type of custom work, and we invite our customers to make use of our extensive capabilities.

These include:

- 1) Dimensional customization of standard size products
- 2) Custom finishes
- 3) For larger orders, completely custom-designed products, as well as non-standard wood species can be specified.

Custom orders may require additional production lead times. Contact Engineering at the e-mail address engquotes@krug.ca.

Care and Maintenance Leather

Leather is a natural product and requires very little care during use. Most stains can be removed with a clean dry cloth. For stubborn spots and stains, use a mild non-detergent cleaner, rinse well and let air dry naturally. Do not use saddle soap, cleaning solvents, furniture polish, oils, varnish, abrasive cleaners, soaps or ammonia waters.

Fabric Upholstery

Professional upholstery cleaning is recommended.

Flammability Standards for Krug Fabric Program

- Passes State of California Technical Bulletin CAL 117-2013

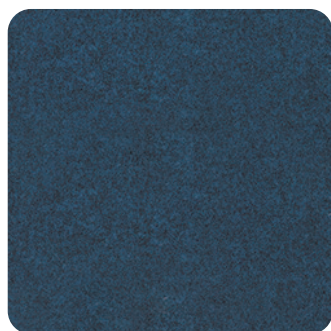
KRUG TEXTILES - UPHOLSTERY FABRICS



Krug Textiles - Stocked Fabric Program

Grade 1

ARLO



308 MIDNIGHT



306 PETROL



908 CHARCOAL



93 SEAL



601 PEARL



84 NUTMEG



62 OATMEAL



90 LIMESTONE

FRANKLIN



47 CAMEL



3009 MIDNIGHT



67 FAWN



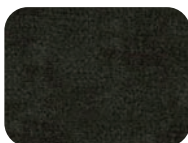
97 CINDER



94 METAL



909 BLACK



9004 CHARCOAL

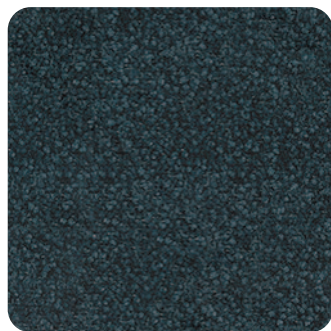


308 PETROL



108 ORCHID

COMRADE



309 MIDNIGHT



84 TEAK



63 LINEN



24 ALPINE



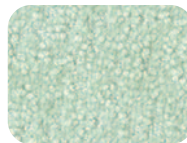
905 IRON



601 SNOW



57 MARIGOLD



31 DUCK EGG

FELICITY



601 IVORY



305 SKY



603 TAUPE



93 COAL



405 HENNA



64 PUTTY



62 FAWN



36 BLUEBERRY

Krug Textiles - Stocked Fabric Program

Grade 2

GRADDY



25 CAPER



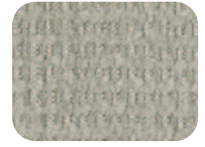
31 SKY



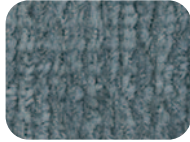
604 FLAX



901 CHAR



93 GRAY



34 SLATE



84 TEAK



98 NICKLE

YATES



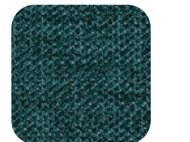
84 BIRCH



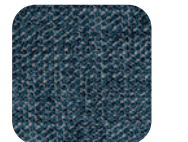
44 CLAY



87 TAUPE



25 JUNIPER



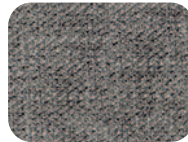
305 INDIGO



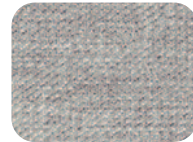
109 CRANBERRY



803 TOAST



92 ZINC



91 SILVER



908 CHARCOAL

MCCOY



608 TUNDRA



601 CREME



908 CHARCOAL



62 COPPER



108 CORDOVAN



32 ROBIN'S EGG



94 MERCURY

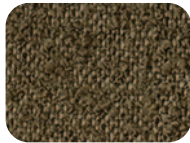


84 BARK

ORIS



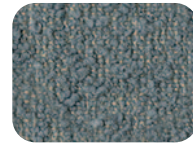
908 DOMINO



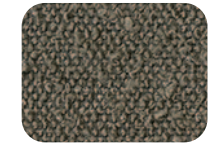
604 BARK



601 CREAM



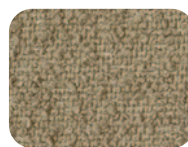
306 DELFT



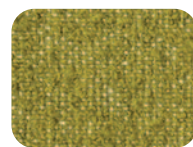
902 ZINC



305 MIDNIGHT



64 PUTTY



205 CHARTREUSE

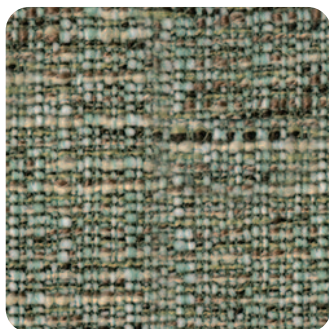
KRUG TEXTILES - UPHOLSTERY FABRICS



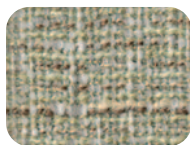
Krug Textiles - Stocked Fabric Program

Grade 3

MORITZ



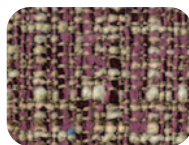
205 SPEARMINT



61 OYSTER



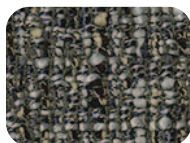
306 CADET



104 MULBERRY



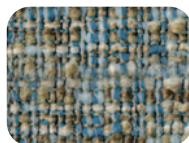
31 AEGEAN



9008 CHARCOAL



82 CLAY



304 CAPRI

LORENZO



306 INDIGO



24 ALPINE



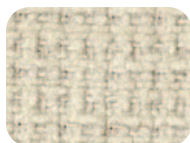
64 LINEN



91 FLANNEL



32 MIST



601 CREAM



106 HENNA



604 STUCCO

BISCOTTI



302 CAPRI



45 SPICE



61 DESERT



91 GRANITE

INTRIGUE



601 OYSTER



27 OLIVE



4003 OCHRE



908 CHARCOAL



3009 MIDNIGHT



805 PECAN



608 STUCCO



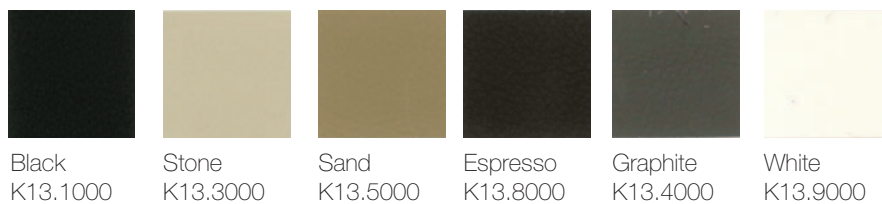
605 STRAW

Krug Textiles - Faux Leather Program - Grade 2



Krug Textiles - Leather Program - Grade 8

Please contact Customer Service for specific information on leathers, available colors and lead times.



Krug Textiles - Cut fabric NET price per yard

Grade 1	\$21
Grade 2	\$33
Grade 3	\$44

LATEX FREE

Krug products are made with latex-free materials to prevent the allergic reaction that latex causes in some people.

CUSTOMER’S OWN MATERIAL - C.O.M.

Customer’s Own Material (COM/COL)

COM/COL must be received three weeks prior to the acknowledged ship date. Orders with COM/COL not received by the required deadline will be delayed. A description of the upholstery cover, including supplier name, pattern name, upholstery cover name and color number must be included with the purchase order.

COM/COL testing requires 3 business days and samples are to be directed to Customer Service. The customer has the option of providing the sample COM/COL before, at time of order, or once the sample COM/COL is received. If the customer does not send a sample for approval in advance of sending actual material, Krug will not be responsible for the cost of any upholstery cover or other material that it determines to be unsuitable for the product or our process.

When the COM/COL upholstery cover is received at Krug, it must be clearly identified with the upholstery cover name and color, and tagged with name of the Krug customer and purchase order number. Krug will inspect all COM/COL upholstery covers when received to determine if it will be suitable for upholstery. Where Krug feels that the upholstery cover or leather specified will compromise the quality or integrity of our products, customers will be contacted to direct these concerns. Further, Krug reserves the right to refuse to accept and use any COM upholstery covers or leathers that will compromise our products in any way that is unacceptable to Krug. Krug cannot assume responsibility for the durability or tailoring quality of customer’s own material.

Yardage specified in this price guide is approximate. In the case of multiple product orders, multiply the number of items by the COM yardage specified to determine upholstery cover required, unless otherwise indicated. Additional yardage may be needed if the material is less than 54” wide, or patterned or striped and requires matching. All COMs are cut “up the roll” unless otherwise stated by the customer. All striped upholstery covers will be applied vertically unless otherwise stated by the customer and after approval by Krug. Krug will not be responsible for directional or positional problems with its application of COM material, unless it has been provided with explicit instructions by the customer. Special instructions should be sent to Krug Customer Service, including a sample (or photocopy) of the upholstery cover. Krug is not responsible for instructions sent with the upholstery cover rolls, or for the method of upholstery if no instructions have been provided.

Price increases and freight charges to COM/COL acquired on the customer’s behalf will be passed onto the customer.

Application of Directional Upholstery cover

Some COM upholstery covers will be considered directional by Krug even though they are not considered directional by the supplier. All COMs are automatically cut “up the roll” unless otherwise stated by the customer (please see below).



Standard-Cut
“up the roll”



Non-Standard-Cut
across the roll “railroad”

COM/COL Shipping Procedures

For seating COM/COL upholstery covers, please send upholstery covers to:

Krug Inc.
111 Ahrens Street
Kitchener, Ontario
Canada N2H 4C2

Attention: RECEIVER

COM/COL orders cannot be scheduled into production until the upholstery cover has arrived and inspection is complete.

All packages must be clearly marked

“For Customs Clearance by Willson International Custom Brokers”.

According to the North American Free Trade Agreement (NAFTA), goods shipped between the United States and Canada can qualify for exemption from all duties, or for a reduction in duties, if the goods can be proven to originate in either the United States, Canada or Mexico.

Canada Customs requires that a [NAFTA Certificate of Origin](#) and a [Commercial Invoice](#) be completed and sent with the upholstery cover shipment. The Commercial Invoice must clearly state the description of the upholstery cover, the selling price, the make-up or content, and the purchaser. The absence of these two documents will delay the shipments at the U.S./Canada border, thereby potentially delaying the customer order. If the total value of the shipment is less than \$1200 U.S., Customs will accept a Low Value Statement of Origin in place of the NAFTA Certificate of Origin. The Low Value Statement must be signed by a representative of the exporting company. This statement may either be included on the commercial invoice or attached to the invoice. Krug is happy to answer any questions or concerns about COM/COL shipping procedures and the required documents.

CAL 133 & Moisture Barrier

California Technical Bulletin 133 is a flammability test for seating. Krug offers a compliance method which, in combination with non-flammable upholstery covers, may enable the products to meet certification requirements for this test. This process at the same time also provides the products with a Moisture Barrier - a treatment that helps to prevent the passage of liquids and moisture to inside of upholstered components - thereby conferring sanitary and anti-infection benefits. So when CAL 133 is specified, the product also automatically has a Moisture Barrier, and when a Moisture Barrier is specified, the product also features the compliance method and low flammability features of CAL 133.

The application of this upcharge and the compliance method does not mean that the specific configuration of product and upholstery cover are tested and officially certified as being CAL 133 compliant. If official certification is required, Krug will provide this (through an independent certified testing laboratory) at a charge of \$874 per item, plus the cost of the product to be tested. Lead time for certification testing is typically 4-8 weeks. Krug assumes no responsibility for the testing of our products in combination with upholstery covers, or for the results of any testing conducted. Some specific configurations of product and upholstery have already been tested. Please contact Customer Service for additional information.

C.O.L. Yardage

To calculate C.O.L. yardage required, please use the following conversions based on COM yardage: Leather must be ordered in square footage.

- 17 square feet in a yard
- Approx. 3 yards in a hide
- Approx. 51 square feet in a hide
- Please use grade 3 pricing for COL

Upholstery Cover Yardage Calculation

To calculate yardage required for COM and other non-standard upholstery cover orders, please contact Krug Customer Service at 1.888.578.5784. Unless otherwise stated, upholstery cover rolls are assumed to be a minimum 54” wide. Please use the guide below to calculate the percentage of extra upholstery cover required to cover large repeats. The repeat is calculated by adding both the vertical and horizontal measurements together and then referring to the chart below for extra yardage required.

		2”-14”	15”-19”	20”-27”	28”-36”
FABRIC	Plain	Repeat	Repeat	Repeat	Repeat
54	0%	10%	15%	20%	25%
53-50	16%	20%	25%	30%	35%
48	16%	25%	30%	35%	40%
45	40%	50%	55%	60%	65%
36	50%	60%	65%	70%	75%

GRADED-IN UPHOLSTERY PROGRAMS

Krug has partnered with several textile brands to grade in their offerings, designed to provide a wide range of upholstery selections for our seating products.

Upholstery pricing and availability is subject to change without notice. We grade this upholstery according to the pricing of the fabric suppliers - when their pricing changes, the Krug grade may change.

When placing an order, a Krug customer must specify the complete upholstery number, along with the appropriate Krug model number and finish. Krug will supply the complete product at the prices listed. Orders specifying graded-in upholstery cannot be cancelled once the upholstery has been ordered.

Upholstery Grades

To determine the price of a product for graded-in upholstery, use the reference lists located on Krug's website under - Products - Textiles, to view the upholstery grade (1-9). Krug is not responsible for the discontinuation of this upholstery. Please contact Customer Service for information on upholstery not listed.

When two upholstery selections are specified for use on seating, the higher grade upholstery price will apply to the order.

High Performance upholstery; Polyurethane, Vinyl or Crypton, is particularly suitable for healthcare and other intensive-use environments.

Upholstery Samples

If you require additional samples or memos for presentation, please contact fabric supplier directly.

Flammability Standards

- Tunnel Test Surface Ratings Class A rating
- Class 1 UFAC
- Passes State of California Technical Bulletin CAL 117-2013

Please contact fabric supplier directly for further flammability information pertaining to specific upholstery.

Special Conditions

Acknowledgments will give the estimated delivery date of the finished product. Some upholstery is imported, and availability may affect estimated delivery time. For large projects, please contact fabric supplier directly for availability of yardage.

KRUG EXPRESS PROGRAM

PROGRAM DETAILS

KrugExpress orders are ready to ship by the date acknowledged. Delivery and shipping schedules may result in actual shipping of orders at a later date. Statutory holidays and scheduled factory vacations may add to acknowledged lead times of *KrugExpress* orders. Unless otherwise specified on the order, the customer's standard method of shipping Krug products will be utilized.

Available factory capacity for *KrugExpress* is filled by orders received on a "first come, first serve" basis. If the normal *KrugExpress* lead time is not available for your order because available capacity has been filled, you will be immediately advised of the earliest available ready-to-ship date. Please consult your Customer Service representative in advance if you wish to confirm the specific lead time availability for a *KrugExpress* order.

Orders must be received by midnight of a given day for that day to be considered the official day the order is received. Order lead times are acknowledged from the date the order is received, but not including the date the order is received.

KrugExpress orders must be "clean" when received in order to be considered officially received on a given day, and lead times will be acknowledged from the date orders are determined to be "clean".

Changes to *KrugExpress* orders are not allowed under any circumstances.

Orders for product on *KrugExpress* must clearly state: "*KrugExpress*".

COM and graded-in upholstery is available on Krug Express. Orders are scheduled on Krug Express, and given the best available date, when the upholstery is received at Krug. Some conditions apply.

SEATING & OCCASIONAL TABLES PROGRAM

Orders for seating products on the *KrugExpress* program may be subject to quantity maximums. Please contact Krug Customer Service for more information.

Quantity maximums are dependent upon available capacity, in order to insure that we ship all orders on time. Please note that the CAL 133 option is not available on *KrugExpress*.

Only standard wood finishes are available for *KrugExpress* orders. Laminates are not available on *KrugExpress*.

Krug Express includes all Krug seating and occasional tables as well as Krug conference and casegood products to complement this seating offering.

KRUG BASE STYLES

Base Styles	Description
Black Nylon	5 blade glass reinforced molded nylon base with 2 1/4" hooded dual wheel casters.
Polished Aluminum	5 blade polished cast aluminum base with 2 1/4" dual wheel casters (upcharge of \$115 applies.)
Seat Slider	Seat slider mechanism featuring a 2" range of adjustment front to back when seated. The lever to activate this feature is located under the seat of the user's left side and is activated by a simple twist of the knob.
Wood	5 blade steel bar stock base with finished wood caps and 2" black hooded dual wheel casters.
Chrome	5 blade polished chrome base with 2 1/4" dual wheel casters.
Jury Bases	Jury Bases assembly consists of a black 9" diameter conical/cast base for permanently mounting a chair to the floor. Into the base is inserted a black pneumatic gas cylinder with self returning action from rotation, and self returning height feature when exiting the chair. Allows for full 360 degree rotation. Limited degrees of rotation are not available.
Jury Bases	

Pan Am
Pan1-M11J



Bank of England
177-J



Dorso
D0S1-H2011J



Cadence
CAD1-HW12J

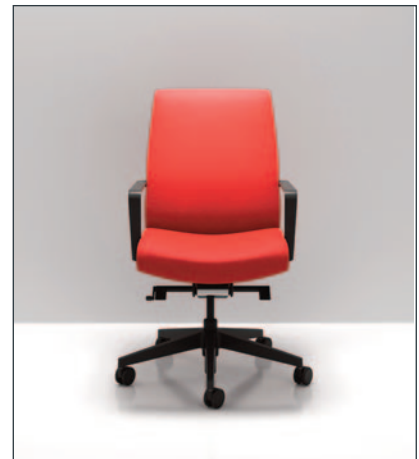


C5
C5E1MB41AJ



Aqua
AQU1M33J





All products are air emissions certified and are available as FSC® certified

krug

solutions@krug.ca | www.krug.ca | 1.888.578.KRUG