

CADENCE
Price and Specification Guide
USA



Effective January 1, 2023

krug

Advancing Design Through Innovation

CADENCE | TABLE OF CONTENTS

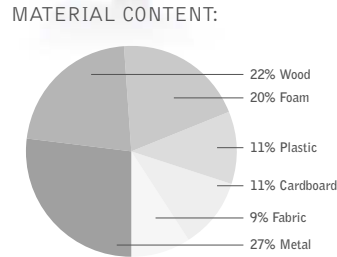
CADENCE

- 2 Cadence LEED Credit Summary
- 3 Cadence Features & Options
- 3 Cadence Dimensions & COM
- 4 Cadence Mid Back Pricing
- 6 Cadence High Back Pricing
- 8 Cadence Guest LEED Credit Summary
- 9 Cadence Guest Pricing

GENERAL INFORMATION

- 10 Terms & Conditions
- 10 Warranty
- 12 KRUG Textiles - Upholstery Fabrics
- 14 KRUG Textiles - Leather & Faux Leather
- 16 Customer's Own Material (COM/COL)
- 16 CAL 133 & Moisture Barrier
- 17 Graded-In Upholstery Programs
- 17 *KrugExpress*
- 18 Wood Finish
- 18 Base Styles

LEED CI CREDITS



PRE-CONSUMER
RECYCLED CONTENT = 4.67%

POST-CONSUMER
RECYCLED CONTENT = 17.3%

Up to 26.67% of this Cadence product is recyclable at the end of its useful life.

CONTRIBUTES TO

CREDIT	CONTRIBUTES TO	POINTS
CREDIT 2.1 - 2.2	Construction Waste Management	1-2 point(s)
CREDIT 3.3	Resource Reuse	1 point
CREDIT 4.1	Recycled Content	1 point
CREDIT 4.5	Low Emitting Materials, Systems & Seating	1 point
CREDIT 5.1	Regional Materials*	1 point
CREDIT 7	Certified Wood (MUST BE REQUESTED)	1 point(s)

*This credit is only applicable if in total 20% of the combined value of the procurement of construction materials and in the furniture are manufactured within a radius of 500 miles. This credit will apply if the installation of the finished product occurs within 500 miles of Kitchener, Ontario.

level® CERTIFICATION & AIR EMISSIONS CERTIFICATION



level® CERTIFICATION

BIFMA's e3 Furniture Sustainability Standard is a voluntary, multi-attribute standard that measures the degree of sustainability of furniture. This standard evaluates product and company environmental attributes and compliance systems in a wide range of elements which include Materials, Energy & Atmosphere, Human & Ecosystem Health and Social Responsibility. Cadence products have earned level®, BIFMA's sustainability certification program for furniture, certification through third-party verification against the e3 standard.



FSC
www.fsc.org
FSC® C021699

The mark of responsible forestry

AIR EMISSIONS

All Cadence products are supplied air-emissions certified. Contact customer service for information.

FSC®

In 2005, Krug received Forest Stewardship Council® (FSC®) Chain-of-Custody certification for our manufacturing facilities. The FSC® Chain-of-Custody tracks certified wood from seedling to final sale. It signifies that the growth, harvesting and production of goods are entirely achieved through responsible forestry, which guarantees a healthy supply of forest resources for generations to come.



Architects, designers, and building professionals can specify FSC®-certified products in order to achieve a point from the U.S. Green Building Council's Leadership in Energy and Environmental Design (LEED) Rating System.

CADENCE | FEATURES & OPTIONS



RECLINE ADJUSTMENT

The recline adjustment on the Cadence series allows a 24 degree range of motion. The foremost lever located on the right-hand side (when you are in a seated position) engages a device to lock the back in any position within the chair's range of movement. Lowering the lever locks the back at any position within the range. Raising the lever releases the lock and the back will move freely through the entire range.



SEAT HEIGHT ADJUSTMENTS

The rear-most lever located in the right-hand side (when you are in the seated position) activates the seat height adjustment. Pull up on the lever to adjust seat height up or down through a range of adjustment of 3 inches.



BACK HEIGHT ADJUSTMENT

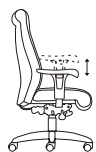
(on selected models only)

The back height is adjustable on selected models of Cadence series. The mechanism adjusts the back while in the seated position. The adjustable height back has a 4 inch range of movement with an 8 position stop mechanism. Place both hands on either side of the lower back cushion and lift and click to the desired height. Raise the back to the highest position to release the back height lock and lower to the first and lowest position.



BACK TENSION

A hand wheel centrally located near the front underside of the chair controls the amount of tension applied to the back. Turning the knob clockwise when you are in the seated position lessens the tension. Turning the knob counter-clockwise increases the tension.



ARM HEIGHT

(on selected models only)

A trigger release button located outside and below the arm pad adjusts the arm height. Depress the trigger to raise arm through its height range of 3.5 inches and 8 settings. Depress the trigger to raise the arm, release when desired height is reached to lock in position.

CAL 133 & MOISTURE BARRIER

California Technical Bulletin 133 is a flammability test for seating. Krug offers a compliance method which, in combination with non-flammable upholstery covers, may enable the products to meet certification requirements for this test. This process at the same time also provides the products with a Moisture Barrier - a treatment that helps to prevent the passage of liquids and moisture to inside of upholstered components - thereby conferring sanitary and anti-infection benefits. So when CAL 133 is specified, the product also automatically has a Moisture Barrier, and when a Moisture Barrier is specified, the product also features the compliance method and low flammability features of CAL 133. CAL 133 and Moisture Barrier are available for an upcharge of **\$59 list per yard.**


The application of this upcharge and the compliance method does not mean that the specific configuration of product and upholstery cover are tested and officially certified as being CAL 133 compliant. If official certification is required, Krug will provide this (through an independent certified testing laboratory) at a charge of \$833 per item, plus the cost of the product to be tested. Lead time for certification testing is typically 4-8 weeks. Krug assumes no responsibility for the testing of our products in combination with upholstery covers, or for the results of any testing conducted. Some specific configurations of product and upholstery have already been tested. Please contact Customer Service for additional information.


DIMENSIONS & COM REQUIREMENTS

		Overall Width	Overall Depth	Overall Height	Seat Height	Height of Arms from floor	Width between Arms	Seat Depth	Height Range	Shipping Weight	Cube	COM Yardage	
MID BACK	Urethane	24.5	26	36.75	17.75	26.75	19.5	19.75	4	43	18	2.3	
	Narrow Width Adjustable	25	26	36.75	17.75	24.25-30.25	19.5	19.75	4	43	18	2.3	
	Wood & Urethane	24.5	26	36.75	17.75	26.75	19.5	19.75	4	43	18	2.3	
	Wood & Upholstered	24.5	26	36.75	17.75	26.75	19.5	19.75	4	43	18	2.8	
	Completely Upholstered	24.5	26	36.75	17.75	26.75	19.5	19.75	4	43	18	3.0	
Wide Width	Armless	19.5	26	36.75	17.75	-	-	19.75	4	41	18	2.3	
	Urethane	26	26	36.75	17.75	26.75	21	19.75	4	45	18	2.3	
	Adjustable	26.5	26	36.75	17.75	24.25-30.25	21	19.75	4	45	18	2.3	
	Wood & Urethane	26	26	36.75	17.75	26.75	21	19.75	4	45	18	2.3	
	Wood & Upholstered	26	26	36.75	17.75	26.75	21	19.75	4	45	18	2.8	
HIGH BACK	Completely Upholstered	26	26	36.75	17.75	26.75	21	19.75	4	45	18	3.0	
	Armless	21	26	36.75	17.75	-	-	19.75	4	43	18	2.3	
	Narrow Width	Urethane	24.5	26	43	17.75	26.75	19.5	19.75	4	46	20	2.5
	Adjustable	25	26	43	17.75	24.25-30.25	19.5	19.75	4	46	20	2.5	
	Wood & Urethane	24.5	26	43	17.75	26.75	19.5	19.75	4	46	20	2.5	
Wide Width	Wood & Upholstered	24.5	26	43	17.75	26.75	19.5	19.75	4	46	20	3.0	
	Completely Upholstered	24.5	26	43	17.75	26.75	19.5	19.75	4	46	20	3.2	
	Urethane	26	26	43	17.75	26.75	21	19.75	4	48	20	2.5	
	Adjustable	26.5	26	43	17.75	24.25-30.25	21	19.75	4	48	20	2.5	
	Wood & Urethane	26	26	43	17.75	26.75	21	19.75	4	48	20	2.5	
ARM CHAIR	Wood & Upholstered	26	26	43	17.75	26.75	21	19.75	4	48	20	3.0	
	Completely Upholstered	26	26	43	17.75	26.75	21	19.75	4	48	20	3.2	
	Urethane	27.25	27	36	18.25	26	18.75	18	-	23	18	1.7	

Height measurements are taken with the pneumatic lift (and adjustable arm and back when applicable) in the lowest position. All dimensions are in inches and approximate and are subject to change without notice. Contact Customer Service if dimensions are critical.


CADENCE | MID BACK

DESCRIPTION/MODEL	WOOD FINISH	COM		COL		FABRIC GRADES			LEATHER		
		1	2	3	4	5	6	7	8	9	
	URETHANE ARMS										
	CAD1-MW11B		1355	1424	1486	1674	1774	1864	2006	2344	2556
	CAD1-MN11B										
	CAD1-MW21B										
	CAD1-MN21B										
	CAD1-MW11W	Cherry, Maple, Walnut, Medium Anigre	1610	1680	1736	1925	2031	2106	2259	2599	2800
	CAD1-MN11W	Cherry, Maple, Walnut, Medium Anigre									
	CAD1-MW21W	Cherry, Maple, Walnut, Medium Anigre									
CAD1-MN21W	Cherry, Maple, Walnut, Medium Anigre										

	ADJUSTABLE ARMS										
	CAD1-MW15B		1304	1370	1427	1614	1709	1783	1933	2255	2469
	CAD1-MN15B										
	CAD1-MW25B										
	CAD1-MN25B										
	CAD1-MW15W	Cherry, Maple, Walnut, Medium Anigre	1559	1624	1682	1866	1962	2039	2187	2511	2715
	CAD1-MN15W	Cherry, Maple, Walnut, Medium Anigre									
	CAD1-MW25W	Cherry, Maple, Walnut, Medium Anigre									
CAD1-MN25W	Cherry, Maple, Walnut, Medium Anigre										

ORDERING NOTES:

CAD-MW25 versions are available with optional seat slider mechanism at an upcharge of **\$74 list**. Specifying seat slider option may add additional lead time to production schedules. Please contact Customer Service for more information.

	WOOD AND URETHANE ARMS										
	CAD1-MW12B		1441	1512	1626	1779	1886	1965	2131	2488	2695
	CAD1-MN12B										
	CAD1-MW22B										
	CAD1-MN22B										
	CAD1-MW12W	Cherry, Maple, Walnut, Medium Anigre	1694	1766	1831	2034	2139	2224	2388	2743	2939
	CAD1-MN12W	Cherry, Maple, Walnut, Medium Anigre									
	CAD1-MW22W	Cherry, Maple, Walnut, Medium Anigre									
CAD1-MN22W	Cherry, Maple, Walnut, Medium Anigre										




ORDERING NOTES: Value Mechanism Option - for a price reduction of \$100 per chair, we offer a lower-function mechanism option, which includes full swivel and rearward tilt capability, tilt tension control, and gas lift height adjustment activator. For jury base version of this chair, please add a 'J' for the base style at the end of the model number and **add \$71** to the list price. Cadence arms and bases are available in Cherry, Maple, Walnut and Medium Anigre finishes. Please see page 18 for finish color selection and clearly mark on your purchase order. CAL 133 and Moisture Barrier options are available for an upcharge of **\$59 list per yard**.



PRODUCT CODE KEY

Line	Series	Back Style	Back Adjustment	Arm Style	Base Style
CAD	1	MW	1	1	W
Cadence	Management Seating	Mid Back Wide	Fixed Back	Urethane	Wood
		MN	2	2	B
		Mid Back Narrow	Adjustable Back	Wood And Urethane	Black Nylon
				5	J
				Adjustable	Jury Base

CADENCE | MID BACK

DESCRIPTION/MODEL	WOOD FINISH	COM		COL			FABRIC GRADES			LEATHER	
		1	2	3	4	5	6	7	8	9	
	WOOD AND UPHOLSTERED ARM										
	CAD1-MW13B		1626	1698	1817	1965	2074	2157	2320	2676	2939
	CAD1-MN13B										
	CAD1-MW23B										
	CAD1-MN23B										
	CAD1-MW13W	Cherry, Maple, Walnut, Medium Anigre	1881	1958	2020	2224	2326	2412	2575	2934	3186
	CAD1-MN13W	Cherry, Maple, Walnut, Medium Anigre									
CAD1-MW23W	Cherry, Maple, Walnut, Medium Anigre										
CAD1-MN23W	Cherry, Maple, Walnut, Medium Anigre										
	COMPLETELY UPHOLSTERED										
	CAD1-MW14B		1582	1654	1771	1919	2025	2109	2273	2629	2920
	CAD1-MN14B										
	CAD1-MW24B										
	CAD1-MN24B										
	CAD1-MW14W	Cherry, Maple, Walnut, Medium Anigre	1833	1909	1972	2175	2282	2365	2530	2887	3166
	CAD1-MN14W	Cherry, Maple, Walnut, Medium Anigre									
CAD1-MW24W	Cherry, Maple, Walnut, Medium Anigre										
CAD1-MN24W	Cherry, Maple, Walnut, Medium Anigre										
	ARMLESS										
	CAD1-MW10B		1215	1283	1343	1532	1632	1720	1865	2202	2437
	CAD1-MN10B										
	CAD1-MW20B										
	CAD1-MN20B										
	CAD1-MW10W	Cherry, Maple, Walnut, Medium Anigre	1468	1537	1598	1786	1890	1963	2118	2457	2664
	CAD1-MN10W	Cherry, Maple, Walnut, Medium Anigre									
CAD1-MW20W	Cherry, Maple, Walnut, Medium Anigre										
CAD1-MN20W	Cherry, Maple, Walnut, Medium Anigre										

ORDERING NOTES

Value Mechanism Option - for a price reduction of \$100 per chair, we offer a lower-function mechanism option, which includes full swivel and rearward tilt capability, tilt tension control, and gas lift height adjustment activator.

For jury base version of this chair, please add a 'J' for the base style at the end of the model number and **add \$71** to the list price.


Cadence arms and bases are available in Cherry, Maple, Walnut and Medium Anigre finishes. Please see page 18 for finish color selection and clearly mark on your purchase order.


CAL 133 and Moisture Barrier options are available for an upcharge of **\$59 list per yard**.




PRODUCT CODE KEY

Line	Series	Back Style	Back Adjustment	Arm Style	Base Style
CAD	1	MW	1	0	W
Cadence	Management Seating	Mid Back Wide	Fixed Back	Armless	Wood
		MN	2	3	B
		Mid Back Narrow	Adjustable Back	Wood And Upholstered	Black Nylon
				4	J
				Completely Upholstered	Jury Base

DESCRIPTION/MODEL	WOOD FINISH	COM		COL		FABRIC GRADES			LEATHER			
		1	2	3	4	5	6	7	8	9		
	URETHANE ARMS											
	CAD1-HW11B		1472	1563	1630	1832	1958	2040	2224	2608	2838	
	CAD1-HN11B											
	CAD1-HW21B											
	CAD1-HN21B											
	CAD1-HW11W		Cherry, Maple, Walnut, Medium Anigre	1731	1817	1886	2089	2210	2296	2479	2862	3081
	CAD1-HN11W		Cherry, Maple, Walnut, Medium Anigre									
CAD1-HW21W		Cherry, Maple, Walnut, Medium Anigre										
CAD1-HN21W		Cherry, Maple, Walnut, Anigre										

	ADJUSTABLE ARMS											
	CAD1-HW15B		1415	1501	1569	1766	1880	1963	2139	2511	2742	
	CAD1-HN15B											
	CAD1-HW25B											
	CAD1-HN25B											
	CAD1-HW15W		Cherry, Maple, Walnut, Medium Anigre	1671	1756	1824	2020	2137	2221	2395	2761	2985
	CAD1-HN15W		Cherry, Maple, Walnut, Medium Anigre									
CAD1-HW25W		Cherry, Maple, Walnut, Medium Anigre										
CAD1-HN25W		Cherry, Maple, Walnut, Medium Anigre										

ORDERING NOTES: CAD-MW25 versions are available with optional seat slider mechanism at an upcharge of **\$74 list**. Specifying seat slider option may add additional lead time to production schedules. Please contact Customer Service for more information.

	WOOD AND URETHANE ARM											
	CAD1-HW12B		1564	1662	1733	1955	2080	2169	2361	2770	2990	
	CAD1-HN12B											
	CAD1-HW22B											
	CAD1-HN22B											
	CAD1-HW12W		Cherry, Maple, Walnut, Medium Anigre	1820	1913	1989	2207	2331	2421	2615	3024	3235
	CAD1-HN12W		Cherry, Maple, Walnut, Medium Anigre									
CAD1-HW22W		Cherry, Maple, Walnut, Medium Anigre										
CAD1-HN22W		Cherry, Maple, Walnut, Medium Anigre										

ORDERING NOTES

Value Mechanism Option - for a price reduction of \$100 per chair, we offer a lower-function mechanism option, which includes full swivel and rearward tilt capability, tilt tension control, and gas lift height adjustment activator.

For jury base version of this chair, please add a 'J' for the base style at the end of the model number and **add \$71** to the list price.

Cadence arms and bases are available in Cherry, Maple, Walnut and Medium Anigre finishes. Please see page 18 for finish color selection and clearly mark on your purchase order.



CAL 133 and Moisture Barrier options are available for an upcharge of **\$59 list per yard**.



PRODUCT CODE KEY

Line	Series	Back Style	Back Adjustment	Arm Style	Base Style
CAD	1	HW	1	1	W
Cadence	Management Seating	High Back Wide	Fixed Back	Urethane	Wood
		HN	2	2	B
		High Back Narrow	Adjustable Back	Wood And Urethane	Black Nylon
				5	J
				Adjustable	Jury Base

CADENCE | HIGH BACK

DESCRIPTION/MODEL	WOOD FINISH	COM		COL		FABRIC GRADES			LEATHER		
		1	2	3	4	5	6	7	8	9	
	WOOD AND UPHOLSTERED ARM										
	CAD1-HW13B		1753	1847	1919	2139	2268	2355	2548	2958	3235
	CAD1-HN13B										
	CAD1-HW23B										
	CAD1-HN23B										
	CAD1-HW13W	Cherry, Maple, Walnut, Medium Anigre	2007	2101	2175	2395	2520	2613	2803	3214	3484
	CAD1-HN13W	Cherry, Maple, Walnut, Medium Anigre									
CAD1-HW23W	Cherry, Maple, Walnut, Medium Anigre										
CAD1-HN23W	Cherry, Maple, Walnut, Medium Anigre										
	COMPLETELY UPHOLSTERED ARM										
	CAD1-HW14B		1708	1801	1871	2091	2221	2307	2501	2911	3218
	CAD1-HN14B										
	CAD1-HW24B										
	CAD1-HN24B										
	CAD1-HW14W	Cherry, Maple, Walnut, Medium Anigre	1961	2056	2129	2347	2475	2566	2757	3166	3462
	CAD1-HN14W	Cherry, Maple, Walnut, Medium Anigre									
CAD1-HW24W	Cherry, Maple, Walnut, Medium Anigre										
CAD1-HN24W	Cherry, Maple, Walnut, Medium Anigre										

ORDERING NOTES

Value Mechanism Option - for a price reduction of \$100 per chair, we offer a lower-function mechanism option, which includes full swivel and rearward tilt capability, tilt tension control, and gas lift height adjustment activator.

For jury base version of this chair, please add a 'J' for the base style at the end of the model number and **add \$71** to the list price.

Cadence arms and bases are available in Cherry, Maple, Walnut and Medium Anigre finishes. Please see page 18 for finish color selection and clearly mark on your purchase order.

CAL 133 and Moisture Barrier options are available for an upcharge of **\$59 list per yard**.



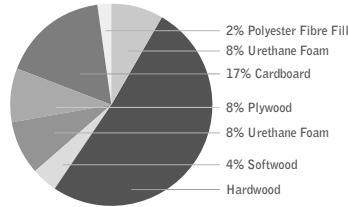
PRODUCT CODE KEY

Line	Series	Back Style	Back Adjustment	Arm Style	Base Style
CAD	1	HW	1	3	W
Cadence	Management Seating	High Back Wide	Fixed Back	Wood and Upholstered	Wood
	2	HN	2	4	B
	Guest Seating	High Back Narrow	Adjustable Back	Completely Upholstered	Black Nylon
		A			J
		Arm Chair			Jury Base

LEED CI CREDITS



MATERIAL CONTENT:



PRE-CONSUMER
RECYCLED CONTENT = .43%

POST-CONSUMER
RECYCLED CONTENT = 16.46%

Up to 16.91% of this Cadence product is recyclable at the end of its useful life.

CONTRIBUTES TO		
CREDIT 2.1 - 2.2	Construction Waste Management	1-2 point(s)
CREDIT 3.3	Resource Reuse	1 point
CREDIT 4.1	Recycled Content	1 point
CREDIT 4.5	Low Emitting Materials, Systems & Seating	1 point
CREDIT 5.1	Regional Materials*	1 point
CREDIT 7	Certified Wood (MUST BE REQUESTED)	1 point(s)

level® CERTIFICATION, AIR EMISSIONS AND FSC® CERTIFICATION



level® CERTIFICATION

BIFMA's e3 Furniture Sustainability Standard is a voluntary, multi-attribute standard that measures the degree of sustainability of furniture. This standard evaluates product and company environmental attributes and compliance systems in a wide range of elements which include Materials, Energy & Atmosphere, Human & Ecosystem Health and Social Responsibility. Cadence products have earned level®, BIFMA's sustainability certification program for furniture, certification through third-party verification against the e3 standard.



the mark of responsible forest

AIR EMISSIONS

All Cadence products are supplied air-emissions certified. Contact customer service for information.

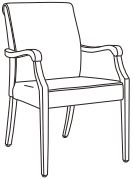
FSC®

In 2005, Krug received Forest Stewardship Council® (FSC®) Chain-of-Custody certification for our manufacturing facilities. The FSC® Chain-of-Custody tracks certified wood from seedling to final sale. It signifies that the growth, harvesting and production of goods are entirely achieved through responsible forestry, which guarantees a healthy supply of forest resources for generations to come. Contact customer service for further information, pricing and leadtimes.



Architects, designers, and building professionals can specify FSC®-certified products in order to achieve a point from the US Green Building Council's Leadership in Energy and Environmental Design (LEED) Rating System.

CADENCE | GUEST

DESCRIPTION/MODEL	WOOD FINISH	COM		COL 3	FABRIC GRADES			LEATHER		
		1	2		4	5	6	7	8	9
 CAD2A	Cherry, Maple, Walnut, Medium Anigre	1375	1440	1501	1603	1705	1805	1910	2034	2258

ORDERING NOTES

CAL 133 and Moisture Barrier options are available for an upcharge of **\$59 list per yard**.

DIMENSIONS & COM REQUIREMENTS

	Overall Width	Overall Depth	Overall Height	Seat Height	Height of Arms from Floor	Width between Arms	Seat Depth	Shipping Weight	Cube	COM Yardage
CAD2A	22.75	27	36	18.25	26	18.75	18	23	18	1.7

ORDERING PROCEDURE

To order please specify the following:

1. Krug product model number
2. Select a finish for the chair frame
3. Select a textile or leather

Dimensions are in inches and approximate. Contact Customer Service if dimensions are critical.

STANDARD FINISHES

Chair frames are available in Cherry, Maple, Walnut and Medium Anigre finishes. Please see page 18 for finish color selection and clearly mark on your purchase order.

Terms and Conditions

Net 30 days on approved credit. A late payment charge of 1% per month will be applied on overdue invoices. This charge will be pro-rated to the number of days past 30 days that the invoice is overdue. All applicable sales taxes are extra. Distribution of this price list does not in itself constitute an offer to sell. Orders can be received only from authorized Krug dealers. Acceptance of any order and terms of sale may be established at the discretion of Krug. Deposits are required on orders received from new accounts as well as on large or special orders. Krug reserves the right to discontinue designs, or to change designs, construction, prices, or materials without notice.

Contact Information

Phone: 1.888.578.KRUG (5784) | Fax: 1.519.748.5177

Purchase Order Fax: 1.888.236.4783

Purchase Order E-mail: orders@krug.ca

Web: www.krug.ca E-mail: solutions@krug.ca

Customer Service Hours

Please note customer service hours are:

8:30 am to 5:00 pm est

Customer Satisfaction

It is the primary goal of Krug and our staff to ensure the complete satisfaction of our customers with our products and performance. If a problem arises with a Krug product after the expiration of the limited warranty period, Krug will exercise its best efforts to achieve the satisfaction of the customer in a manner that is fair to all concerned.

Order Acknowledgments

Each order will be acknowledged via e-mail or fax. This acknowledgment is the final agreement between Krug and the customer, superseding all previous communications regarding the purchase order. Where there is a discrepancy on a purchase order between a product code and a description, Krug will make every effort to resolve the discrepancy, but will be ruled by the product code ordered. Please check all acknowledgments for accuracy, and advise Krug of any discrepancies with a purchase order.

Order Cancellation

Krug reserves the right to not accept or allow cancellation of orders. All products are manufactured on a custom-made, make-to-order basis, and the purchasing, engineering and production of orders begins shortly after order placement - and the customer purchase order is a contract that authorizes Krug to manufacture the products. Acceptance of order cancellation (or partial cancellation) is solely at the discretion of Krug, and is dependent on the extent to which engineering, purchasing and manufacturing has been initiated by the time cancellation is requested. No order cancellations (partial or otherwise) are allowable more than 4 weeks from date of order placement (as order production is unable to be terminated by that point), and full payment of the acknowledged order value is required for any orders cancelled after 4 weeks. Cancellations may be allowable in less than 4 weeks after order placement, depending on the extent to which manufacturing has been initiated. An acceptance of order cancellation requires that the purchaser agrees to make payment for all costs incurred to the point of acceptance of cancellation. Cancellation charges include all costs for purchase of dedicated material and components, engineering costs for non-standard products, and all costs for manufacturing completed to that point, as well as a \$350 net charge for processing of the original order and for processing of cancellation invoicing.

Pricing

Krug endeavors to ensure that all prices in this price list reflect accurately our current prices. However, errors do occur and will be rectified through notices to the field. Krug reserves the right to acknowledge pricing that may be different from the price list.

Storage Charges

Krug reserves the right to assess a nominal storage charge if a customer does not accept shipment of an order within a week of the ship date.

Warranty

Krug warrants the construction and the finish of all our products to be free from defects in materials and workmanship for a period of 10 years from the date of purchase. This warranty is applicable to products in use by their original purchaser. This warranty does not apply to components not manufactured by Krug including textiles, which are subject to the specific warranties of those manufacturers, if any. Textiles (fabric, leather, vinyl, or any other covering material) suppliers do not guarantee their products for durability and color fastness, and nor does Krug. Casters, mechanical and electrical components have a warranty of five years from the date of purchase. The Krug warranty does not apply to COM-specified materials, damage caused by a carrier other than Krug, or variation in wood finishes due to natural wood color variation. Krug cannot be held responsible for variations in fabric dye lots from order to order. All fabric is carefully inspected when it is received, but a degree of variation in color should be expected. Repairs or replacement of any defect covered under this warranty by Krug will be made, at our option and method, at no charge to the original purchaser during the warranty period. Krug's judgement is final and binding with respect to the nature or cause of defects or damage, and the necessity or manner of repair or replacement.

This warranty does not apply to defects or damage resulting from:

- normal wear and tear occurring with the use of the product
- negligence, misuse, excessive use, alteration, improper cleaning or repair
- substitution or use of incorrect or unauthorized components or material
- handling or installation that is incorrect, or that causes damage or defect
- damage incurred by a freight carrier other than Krug
- wearing of finishes and fabrics, and normal variations in materials (including dye lot variations)
- properties of natural materials, including wood and leather
- exposure to environments with uncontrolled temperature and humidity (products must be transported, stored and used in climate-controlled conditions)

Blanket Wrapping

Krug will blanket wrap larger seating orders at customer's request. Please indicate on your purchase order and contact Customer Service.

Export Packaging

Krug is pleased to provide the option for export packaging on all our products, to provide additional protection from damage. For shipments overseas, a quote for export packaging can be provided, based on the products to be ordered and the delivery destination - please contact Customer Service or Bids & Specification Support for more information and a quotation. KRUG is not responsible for shipment damage occurring on overseas shipments

Export Packaging is STRONGLY RECOMMENDED for:

- (A) all shipments outside of the lower 48 states and Canada.
- (B) all shipments that will be held in storage for an extended period prior to installation.

Important: Please note that Krug will not be responsible for damage claims on product shipped or stored in the above conditions but where export packaging has not been utilized.

Dimensions

Dimensions are in inches and approximate, and subject to change without notice. Contact Customer Service if dimensions are critical.

Installation Support

For assistance please contact Technical Support at 1-888-578-5784 x216 or e-mail installationhelp@krug.ca and you will be directed to the appropriate installation support person.

GENERAL INFORMATION

Freight Terms and Conditions

1. All product is shipped FOB the Krug factory. Freight is either pre-paid to the destination or not pre-paid, depending on established customer specific freight terms.

2. Docks at the selected delivery location must be equipped to handle a 53' trailer. If a dock is inadequate for delivery by Krug, Krug will re-deliver to another local location and any additional costs will be charged to the customer.

3. For all deliveries, it is understood that Krug or its agent is making a dock delivery only (equipped to handle a 53' trailer), and any further work of truck unloading, delivery beyond the dock, installation, and removal of packaging is not authorized or paid for by Krug.

4. Drop shipments to the installation site, and timed deliveries, are available on larger shipments (full truckloads or slightly less) at no additional charge. Drop shipments or timed deliveries for smaller shipments may not be available, or if available will require a surcharge. Deliveries on an after hours basis, or on weekends, or any other special requirements, may be subject to a surcharge. Location and contact information, and the requested time of delivery, is required at least one week prior to the acknowledged shipment date. If this information is not provided one week in advance, or if the location or time of the drop shipment is changed less than one week in advance, a surcharge may be applied, and/or the drop shipment may not be scheduled. For deliveries requested Monday to Thursday after 5:00 pm, please apply a surcharge of \$250/shipment. For deliveries requested Monday to Friday before 7:00 am, please apply a surcharge of \$250/shipment. For deliveries requested Friday (after 3:00 pm) or weekends, please apply a surcharge of \$500/shipment. (local times).

5. For all deliveries - whether to the Customer location or drop shipment - any circumstances that result in the delay of our carrier (including unsuitable receiving facilities, or facilities not open or available), service charges will be applied at the rate of \$75/hour. Where re-delivery is necessary because of these circumstances, the full cost of re-delivery will be charged. If Less Than Truck Load is delivering, one hour is allocated to unload. Any additional time required to unload after the first hour is \$75/hour. If a Truck Load is delivering the order, three hours is allocated to unload. Any additional time required to unload is \$75/hour. Direct deliveries to site for large orders are possible, (must exceed \$60,000 net), and accommodate 48 - 53' trailers. Krug is responsible for delivery to the approved delivery address. If an address change is required, this must be authorized by Krug 5 business days prior to ship date. Any additional delivery costs incurred after this time will be charged to the customer.

Product Strength and Durability Testing

All management seating meets or exceeds the testing requirements of ANSI/BIFMA X5.1-2011. All lounge seating meets or exceeds the testing requirements of FNAE-80-214A. Specific test results and documentation are available on request.



Damaged Shipments

All Krug product is well engineered, carefully inspected, and expertly loaded onto our trucks at our Distribution Center. If you receive any damaged freight, we ask that you do not refuse the shipment. Krug is not responsible for damage to goods that occurs in transit or storage. It is the purchaser and/or receiver's responsibility to examine the goods upon receipt and to notify Krug of any damages, overages or shortages. Any discrepancies should be noted on the Bill of Lading. The delivering carrier will not accept responsibility for shortages or damages if signed "clear". Notification of concealed damage claims must be made to Krug Distribution within 5 days of delivery, along with digital pictures if available. All product and packaging must be available for inspection. Krug liability ceases after 5 business days and Krug will not be responsible for concealed damages if shipments are left unopened. Krug is not responsible for the condition of product that is stored or installed in an environment where temperature and humidity are not controlled.

Field Product Report Authorization

Krug's written authorization, in the form of an FPR number, must be obtained prior to incurring charges of any kind if Krug is expected to pay these charges. This includes authorization for field repairs and replacements, installation and delivery charges. Krug reserves the right to have its representative inspect product related to any request for such authorizations, prior to that authorization being provided. Deductions from invoices paid for any charges to Krug, without prior written authorization in the form of an FPR, will not be accepted. Digital photographs may be required to complete the FPR process.

Returns

No merchandise may be returned without Krug's prior written consent. In the event of an authorized return, a Field Product Report (FPR) number will be issued, and a restocking charge will apply. Return transportation charges must be prepaid. Unauthorized returns will not be accepted and will be returned freight collect. All merchandise being returned must be properly packaged in its original or comparable replacement packaging to ensure protection of the product during handling and transportation. Returns on orders duplicated by the customer must be received in their original packaging to be accepted. Product being returned where Krug has authorized its liability for replacement or repair will be thoroughly inspected on its return, and the results compared to the reason for the return stated on the FPR. Any discrepancies, such as additional damage, signs of usage, missing parts, etc., will result in an adjustment to the amount of credit issued.

Custom Capabilities

Over 15% of our orders involve some type of custom work, and we invite our customers to make use of our extensive capabilities.

These include:

- 1) Dimensional customization of standard size products
- 2) Custom finishes
- 3) For larger orders, completely custom-designed products, as well as non-standard wood species can be specified.

Custom orders may require additional production lead times. Contact Engineering at the e-mail address engquotes@krug.ca.

Care and Maintenance Leather

Leather is a natural product and requires very little care during use. Most stains can be removed with a clean dry cloth. For stubborn spots and stains, use a mild non-detergent cleaner, rinse well and let air dry naturally. Do not use saddle soap, cleaning solvents, furniture polish, oils, varnish, abrasive cleaners, soaps or ammonia waters.

Fabric Upholstery

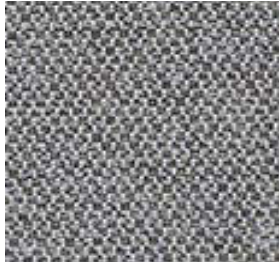
Professional upholstery cleaning is recommended.

Flammability Standards for Krug Fabric Program

- Passes State of California Technical Bulletin CAL 117-2013

Krug Textiles - Stocked Fabric Program

Grade 2



INFINITY PEWTER



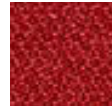
BARLEY



LEMONGRASS



MAIZE



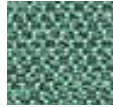
MACINTOSH



TERRAIN



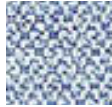
JAVA



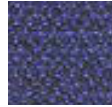
ATOLL



VINE



ASTER



BEYOND



GRAPHITE



ECLIPSE



MARATHON TINT



FLAX



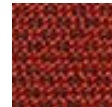
WREN



CARAVEL



CURRY



SUNSET



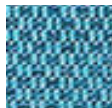
CLOVE



FOLIAGE



OZ



CYAN



TOILE



STORM



NOIR



LINEUP TRANQUIL



BALTIC



SHADOW



SANDSTONE



PEWTER



FERN



SPICE



FUSE PRISTINE



SAFFRON



GINGER



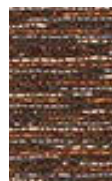
PIMENTO



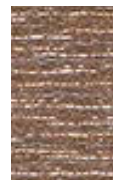
CARMINÉ



IRIS



WALNUT



MALTED



PRISTINE



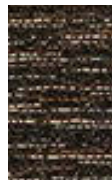
PRISTINE



AZUREAN



LUNAR



PEPPER

KRUG TEXTILES - UPHOLSTERY FABRICS



Krug Textiles - Stocked Fabric Program

Grade 2



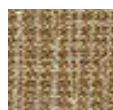
GRAPH ALLOY



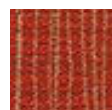
ALPINE



CHALICE



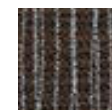
CORK



POPPY



RUBY



BARK



PARROT



TIDAL



WAVE



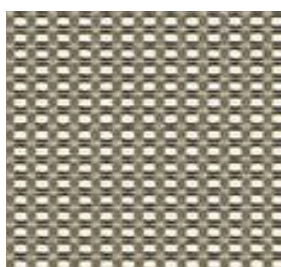
LAPIS



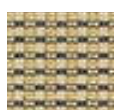
ANCHOR



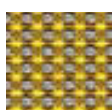
COAL



GRID CHROME



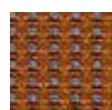
KHAKI



SUNBEAM



APPLE



EMBER



SCARLET



ORCHID



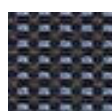
CHROME



GLACIER



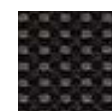
SURF



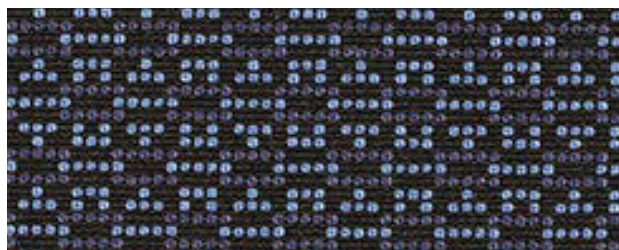
INDIGO



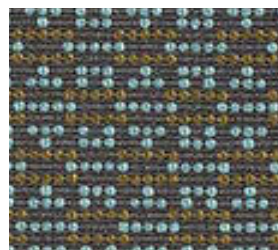
FLINT



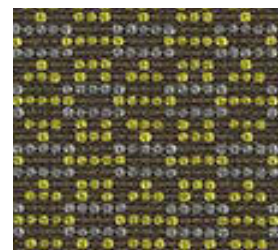
JET



BOBBY IRIS



AQUA



MOSS



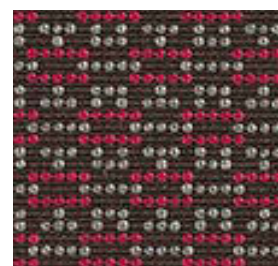
LEMON



GLOW



ANCHOR



FUCHSIA



EPIC LIMESTONE



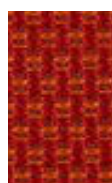
PEARL



JUTE



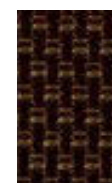
SLICE



FLARE



PORCINI



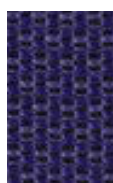
ESPRESSO



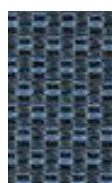
KIWI



CAPRI



REGAL



AZURE



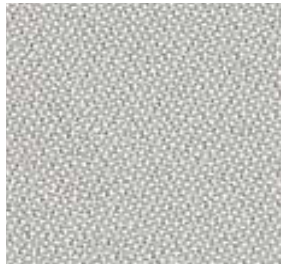
GRANITE



STEEL

Krug Textiles - Stocked Fabric Program

Grade 2



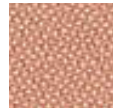
ORIGIN ALLOY



WHEAT



CLAY



BLUSH



GARNET



POPPY



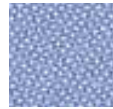
MALT



CLOVER



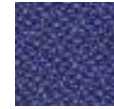
GAIA



VINCA



CYAN



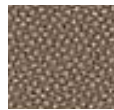
EURO



INDIGO



AVALON



SEED



ARUNDEL



IRON



STATELY



STEEL



SHALE



JET

Grade 3



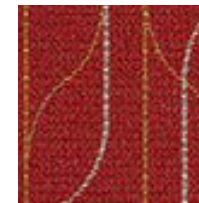
SWIM BISCAI



ANJOU



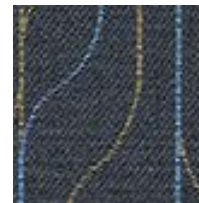
SANDSTONE



CRIMSON



EARTHEN



BALKEN



RIVERBANK



INK



CALDERA

Krug Textiles - Leather Program - Grade 8

Please contact Customer Service for specific information on leathers, available colors and lead times.



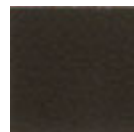
Black
K13.1000



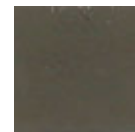
Stone
K13.3000



Sand
K13.5000



Espresso
K13.8000



Graphite
K13.4000



White
K13.9000

Krug Textiles - Cut fabric NET price per yard

Grade 1	\$20
Grade 2	\$32
Grade 3	\$41

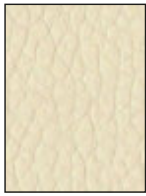
LATEX FREE

Krug products are made with latex-free materials to prevent the allergic reaction that latex causes in some people.

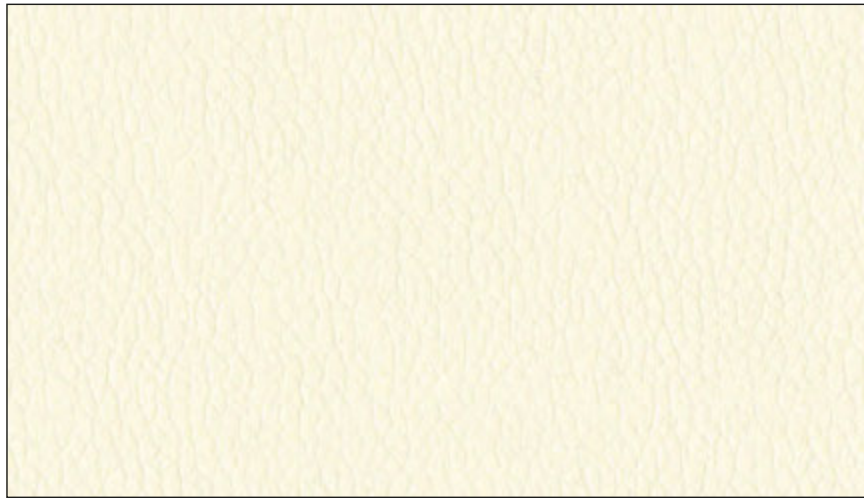
Krug Textiles - Faux Leather Program - Grade 2



White
FL3822



Cream
FL6003



Vanilla
FL0061



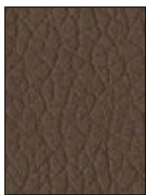
Parchment
FL0605



Sandstone
FL0608



Taupe
FL3948



Mocha
FL0808



Tan
FL0802



Chestnut
FL0087



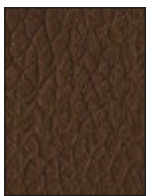
Bisque
FL0805



Chocolate
FL8020



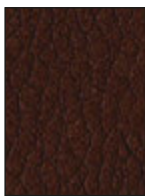
Black
FL9009



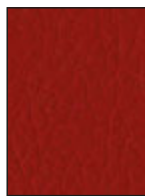
Earth
FL0084



Brick
FL0011



Wine
FL0108



Garnet
FL0017



Rust
FL0014



Citron
FL0054



Sprig
FL0205



Chinchilla
FL6009



Steel
FL0905



Grey
FL9003



Lagoon
FL0037



Pacific Blue
FL3003



Navy
FL3006



Plum
FL1009

CUSTOMER'S OWN MATERIAL - C.O.M.

Customer's Own Material (COM/COL)

COM/COL must be received three weeks prior to the acknowledged ship date. Orders with COM/COL not received by the required deadline will be delayed. A description of the upholstery cover, including supplier name, pattern name, upholstery cover name and color number must be included with the purchase order.

COM/COL testing requires 3 business days and samples are to be directed to Customer Service. The customer has the option of providing the sample COM/COL before, at time of order, or once the sample COM/COL is received. If the customer does not send a sample for approval in advance of sending actual material, Krug will not be responsible for the cost of any upholstery cover or other material that it determines to be unsuitable for the product or our process.

When the COM/COL upholstery cover is received at Krug, it must be clearly identified with the upholstery cover name and color, and tagged with name of the Krug customer and purchase order number. Krug will inspect all COM/COL upholstery covers when received to determine if it will be suitable for upholstery. Where Krug feels that the upholstery cover or leather specified will compromise the quality or integrity of our products, customers will be contacted to direct these concerns. Further, Krug reserves the right to refuse to accept and use any COM upholstery covers or leathers that will compromise our products in any way that is unacceptable to Krug. Krug cannot assume responsibility for the durability or tailoring quality of customer's own material.

Yardage specified in this price guide is approximate. In the case of multiple product orders, multiply the number of items by the COM yardage specified to determine upholstery cover required, unless otherwise indicated. Additional yardage may be needed if the material is less than 54" wide, or patterned or striped and requires matching. All COMs are cut "up the roll" unless otherwise stated by the customer. All striped upholstery covers will be applied vertically unless otherwise stated by the customer and after approval by Krug. Krug will not be responsible for directional or positional problems with its application of COM material, unless it has been provided with explicit instructions by the customer. Special instructions should be sent to Krug Customer Service, including a sample (or photocopy) of the upholstery cover. Krug is not responsible for instructions sent with the upholstery cover rolls, or for the method of upholstery if no instructions have been provided.

Price increases and freight charges to COM/COL acquired on the customer's behalf will be passed onto the customer.

Application of Directional Upholstery cover

Some COM upholstery covers will be considered directional by Krug even though they are not considered directional by the supplier. All COMs are automatically cut "up the roll" unless otherwise stated by the customer (please see below).



Standard-Cut
"up the roll"



Non-Standard-Cut
across the roll "railroad"

COM/COL Shipping Procedures

For seating COM/COL upholstery covers, please send upholstery covers to:

Krug Inc.
111 Ahrens Street
Kitchener, Ontario
Canada N2H 4C2

Attention: RECEIVER

COM/COL orders cannot be scheduled into production until the upholstery cover has arrived and inspection is complete.

All packages must be clearly marked

"For Customs Clearance by Willson International Custom Brokers".

According to the North American Free Trade Agreement (NAFTA), goods shipped between the United States and Canada can qualify for exemption from all duties, or for a reduction in duties, if the goods can be proven to originate in either the United States, Canada or Mexico.

Canada Customs requires that a NAFTA Certificate of Origin and a Commercial Invoice be completed and sent with the upholstery cover shipment. The Commercial Invoice must clearly state the description of the upholstery cover, the selling price, the make-up or content, and the purchaser. The absence of these two documents will delay the shipments at the U.S./Canada border, thereby potentially delaying the customer order. If the total value of the shipment is less than \$1200 U.S., Customs will accept a Low Value Statement of Origin in place of the NAFTA Certificate of Origin. The Low Value Statement must be signed by a representative of the exporting company. This statement may either be included on the commercial invoice or attached to the invoice. Krug is happy to answer any questions or concerns about COM/COL shipping procedures and the required documents.

CAL 133 & Moisture Barrier

California Technical Bulletin 133 is a flammability test for seating. Krug offers a compliance method which, in combination with non-flammable upholstery covers, may enable the products to meet certification requirements for this test. This process at the same time also provides the products with a Moisture Barrier - a treatment that helps to prevent the passage of liquids and moisture to inside of upholstered components - thereby conferring sanitary and anti-infection benefits. So when CAL 133 is specified, the product also automatically has a Moisture Barrier, and when a Moisture Barrier is specified, the product also features the compliance method and low flammability features of CAL 133.

The application of this upcharge and the compliance method does not mean that the specific configuration of product and upholstery cover are tested and officially certified as being CAL 133 compliant. If official certification is required, Krug will provide this (through an independent certified testing laboratory) at a charge of \$833 per item, plus the cost of the product to be tested. Lead time for certification testing is typically 4-8 weeks. Krug assumes no responsibility for the testing of our products in combination with upholstery covers, or for the results of any testing conducted. Some specific configurations of product and upholstery have already been tested. Please contact Customer Service for additional information.

C.O.L. Yardage

To calculate C.O.L. yardage required, please use the following conversions based on COM yardage: Leather must be ordered in square footage.

- 17 square feet in a yard
- Approx. 3 yards in a hide
- Approx. 51 square feet in a hide
- Please use grade 3 pricing for COL

Upholstery Cover Yardage Calculation

To calculate yardage required for COM and other non-standard upholstery cover orders, please contact Krug Customer Service at 1.888.578.5784. Unless otherwise stated, upholstery cover rolls are assumed to be a minimum 54" wide. Please use the guide below to calculate the percentage of extra upholstery cover required to cover large repeats. The repeat is calculated by adding both the vertical and horizontal measurements together and then referring to the chart below for extra yardage required.

		2"-14"	15"-19"	20"-27"	28"-36"
FABRIC	Plain	Repeat	Repeat	Repeat	Repeat
54	0%	10%	15%	20%	25%
53-50	16%	20%	25%	30%	35%
48	16%	25%	30%	35%	40%
45	40%	50%	55%	60%	65%
36	50%	60%	65%	70%	75%

GRADED-IN UPHOLSTERY PROGRAMS

Krug has partnered with several textile brands to grade in their offerings, designed to provide a wide range of upholstery selections for our seating products.

Upholstery pricing and availability is subject to change without notice. We grade this upholstery according to the pricing of the fabric suppliers - when their pricing changes, the Krug grade may change.

When placing an order, a Krug customer must specify the complete upholstery number, along with the appropriate Krug model number and finish. Krug will supply the complete product at the prices listed. Orders specifying graded-in upholstery cannot be cancelled once the upholstery has been ordered.

Upholstery Grades

To determine the price of a product for graded-in upholstery, use the reference lists located on Krug's website under - Products - Textiles, to view the upholstery grade (1-9). Krug is not responsible for the discontinuation of this upholstery. Please contact Customer Service for information on upholstery not listed.

When two upholstery selections are specified for use on seating, the higher grade upholstery price will apply to the order.

High Performance upholstery; Polyurethane, Vinyl or Crypton, is particularly suitable for healthcare and other intensive-use environments.

Upholstery Samples

If you require additional samples or memos for presentation, please contact fabric supplier directly.

Flammability Standards

- Tunnel Test Surface Ratings Class A rating
- Class 1 UFAC
- Passes State of California Technical Bulletin CAL 117-2013

Please contact fabric supplier directly for further flammability information pertaining to specific upholstery.

Special Conditions

Acknowledgments will give the estimated delivery date of the finished product. Some upholstery is imported, and availability may affect estimated delivery time. For large projects, please contact fabric supplier directly for availability of yardage.

KRUG EXPRESS PROGRAM

PROGRAM DETAILS

KrugExpress orders are ready to ship by the date acknowledged. Delivery and shipping schedules may result in actual shipping of orders at a later date. Statutory holidays and scheduled factory vacations may add to acknowledged lead times of *KrugExpress* orders. Unless otherwise specified on the order, the customer's standard method of shipping Krug products will be utilized.

Available factory capacity for *KrugExpress* is filled by orders received on a "first come, first serve" basis. If the normal *KrugExpress* lead time is not available for your order because available capacity has been filled, you will be immediately advised of the earliest available ready-to-ship date. Please consult your Customer Service representative in advance if you wish to confirm the specific lead time availability for a *KrugExpress* order.

Orders must be received by midnight of a given day for that day to be considered the official day the order is received. Order lead times are acknowledged from the date the order is received, but not including the date the order is received.

KrugExpress orders must be "clean" when received in order to be considered officially received on a given day, and lead times will be acknowledged from the date orders are determined to be "clean".

Changes to *KrugExpress* orders are not allowed under any circumstances.

Orders for product on *KrugExpress* must clearly state: "*KrugExpress*".

COM and graded-in upholstery is available on Krug Express. Orders are scheduled on Krug Express, and given the best available date, when the upholstery is received at Krug. Some conditions apply.

SEATING & OCCASIONAL TABLES PROGRAM

Orders for seating products on the *KrugExpress* program may be subject to quantity maximums. Please contact Krug Customer Service for more information.

Quantity maximums are dependent upon available capacity, in order to insure that we ship all orders on time. Please note that the CAL 133 option is not available on *KrugExpress*.

Only standard wood finishes are available for *KrugExpress* orders. Laminates are not available on *KrugExpress*.

Krug Express includes all Krug seating and occasional tables as well as Krug conference and casegood products to complement this seating offering.

STANDARD WOOD FINISH

WOOD FINISHES

Standard wood finishes are:

Finishes on Beech

Appalachian Cherry
 American Cherry
 Imperial Cherry
 Light Cherry
 Medium Cherry
 Natural Cherry
 Sable Cherry
 Standard Cherry
 Light Oak
 Harvest Oak
 Mahogany
 Mellow Oak
 Espresso
 Cordovan Walnut
 Natural Walnut
 Regular Walnut
 SilverGrey on Walnut
 Dark Walnut
 Clear Beech
 Medium Anigre

Finishes on Maple

Clear Maple
 Honey Maple
 Wheat Maple

NATURAL CHARACTERISTICS OF WOOD

Wood is a natural product with inherent color variations that will never be fully mitigated by the finishing process. Please anticipate variation in colors within a single unit, from piece to piece, and from Krug wood finish samples. If a very close match is required, a sample must be provided with the order and an upcharge will apply. Exact color matches are not possible.

Custom Wood Finishes

Add 10% list to your order for special finishes a minimum upcharge is \$500 list per finish per order. (For example, on all orders up to \$5000 list an upcharge of \$500 will apply, on orders \$5000 and up add 10% list to order.)

Special finish upcharges on seating products are calculated on a grade 1 value. For orders with special finishes, a sample that is a minimum 3" by 3" must be received with the order. Special finishes may add additional lead time to production schedules. Since wood is a natural product, some variations in grain, color and stain acceptance will occur. In our finishing processes, we try to minimize variations, but some variation between samples and finished goods should be anticipated.

WOOD FINISHES TO MATCH STANDARD LAMINATES

Willow on Beech
 Copper on Beech
 Shiraz Cherry on Beech
 Park Avenue Walnut on Beech
 Chocolate on Beech
 Nutmeg on Beech
 Portobello on Beech
 Ash on Beech
 Dune on Maple

KRUG BASE STYLES (where applicable)

Base Styles	Description
Black Nylon	5 blade glass reinforced molded nylon base with 2 1/4" hooded dual wheel casters.
Polished Aluminum	5 blade polished cast aluminum base with 2 1/4" dual wheel casters (upcharge of \$115 applies.)
Seat Slider	Seat slider mechanism featuring a 2" range of adjustment front to back when seated. The lever to activate this feature is located under the seat of the user's left side and is activated by a simple twist of the knob.
Wood	5 blade steel bar stock base with finished wood caps and 2" black hooded dual wheel casters.
Chrome	5 blade polished chrome base with 2 1/4" dual wheel casters.
Jury Bases	Jury Bases assembly consists of a black 9" diameter conical/cast base for permanently mounting a chair to the floor. Into the base is inserted a black pneumatic gas cylinder with self returning action from rotation, and self returning height feature when exiting the chair. Allows for full 360 degree rotation. Limited degrees of rotation are not available.
Jury Bases	

Pan Am
 Pan1-M11J



Bank of England
 177-J



Dorso
 D0S1-H2011J



Cadence
 CAD1-HW12J



C5
 C5E1MB41AJ



Aqua
 AQU1M33J





All products are air emissions certified and are available as FSC® certified

krug

solutions@krug.ca | www.krug.ca | 1.888.578.KRUG