

SUSTAINABLE
PERFORMANCE

WOVEN

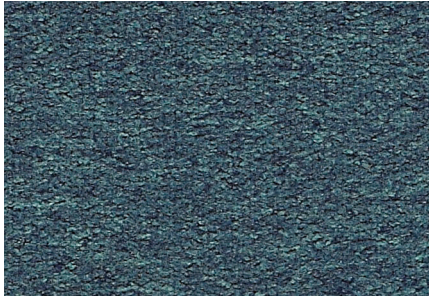
MOMENTUM
TEXTILES

krug

solutions@krug.ca | www.krug.ca | 1.888.578.5784



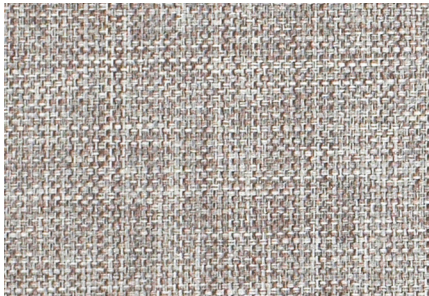
FLOCK FLANNEL



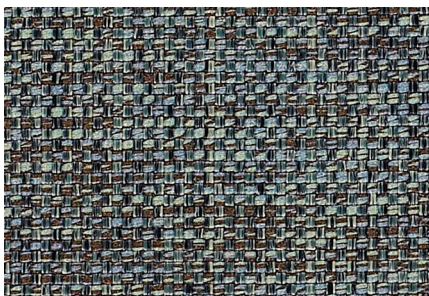
FAUX FELT POOL



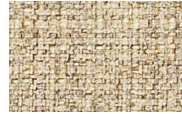
SYNERGY BEDROCK



COVER CLOTH PLATINUM



KIT AQUA



TWINE



HEARTH



PEBBLE



SPROUT



AEGEAN



TANGO



TAUPE



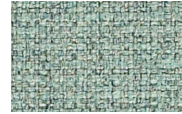
CYAN



QUARTZ



MOONSTONE



SURF



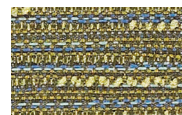
BALTIC



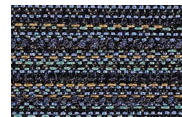
GRAPHITE



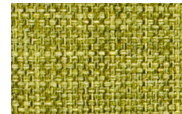
QUAIL



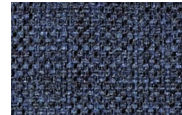
SEAGLASS



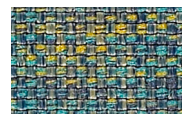
DENIM



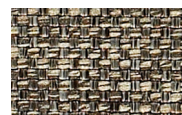
SORREL



INDIGO



PARADISE



PEBBLE



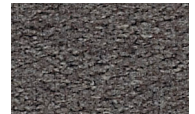
NICKEL



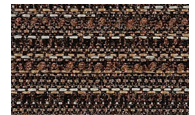
FLINT



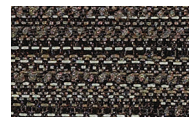
FLANNEL



CHARCOAL



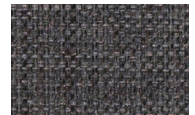
BALSAMIC



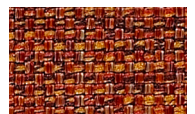
CARBON



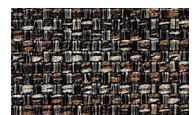
VESPER



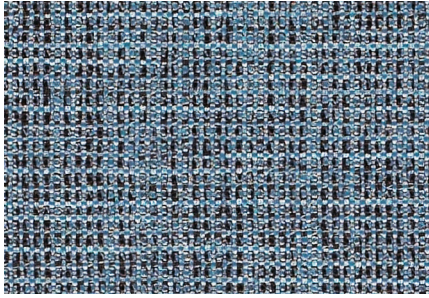
GRAPHITE



FIESTA



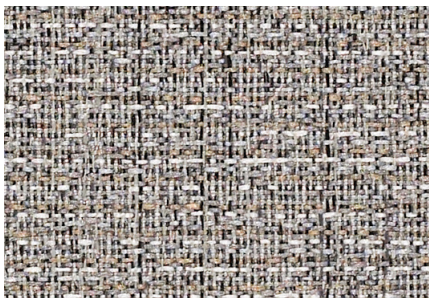
EBONY



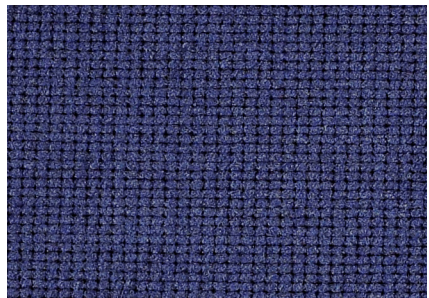
HOBNOB BAY



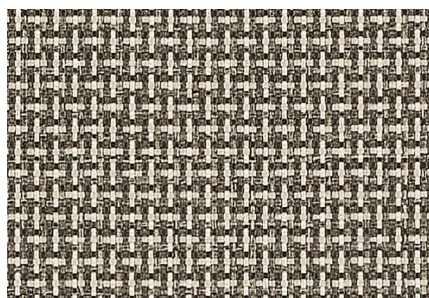
FAUX MO STONE



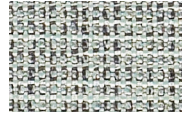
KEYNOTE GRANITE



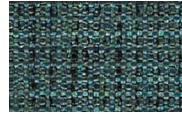
OATH AZURE



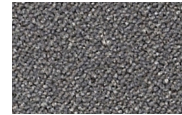
SOLITAIRE GALENA



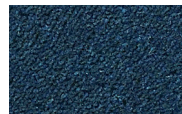
TIDE



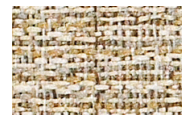
TEAL



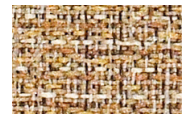
DELTA



SAPPHIRE



CHAI



WICKER



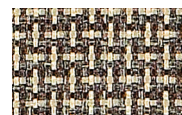
ECRU



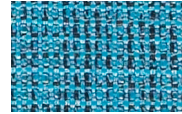
CELADON



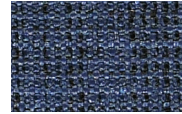
DOVE



GRIFFIN



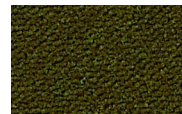
BEYOND



DEPTH



SIENNA



PINE



MENTHE



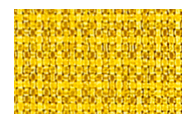
REFLECT



JUNIPER



MINERAL



AZTEC



CADET



ASH



CARBON



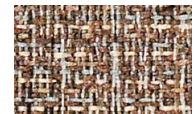
SHALE



BLACK



AQUARIAN



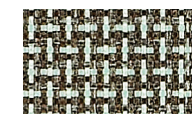
CHICORY



DRIFTWOOD



CHARCOAL



MIST



MIDNIGHT

SPECIFICATIONS

Width - Pattern	Fiber Content & Backing	Abrasion (D.R.)	Light-fastness	Approx. Repeats	Cleaning Code
59" COVER CLOTH 🔥📐☀️🍷🌟	56% Repreve® Post Consumer Recycled Polyester, 44% Polyester	200,000	40 Hrs. Class 4		W Bleach Cleanable (10:1)
56" FAUX FELT 🔥📐☀️🍷🌟	62% Repreve® Post Consumer Recycled Polyester, 38% Polyester	75,000	40 Hrs. Class 4.5		WS Bleach Cleanable (10:1)
55" FAUX MO 🔥📐☀️🍷🌟	58% Repreve® Post Consumer Recycled Polyester, 42% Polyester	200,000	40 Hrs. Class 4		WS Bleach Cleanable (10:1)
56" FLOCK 🔥📐☀️🍷🌟	53% Recycled Polyester, 47% Polyester	140,000	40 Hrs. Class 4.5		W Bleach Cleanable (10:1)
56" HOBNOB 🔥📐☀️🍷🌟	51% Recycled Polyester, 49% Polyester	87,000	40 Hrs. Class 5		W Bleach Cleanable (10:1)
54" KEYNOTE 🔥📐☀️🍷🌟	100% Repreve® Post Consumer Recycled Polyester	100,000	40 Hrs. Class 4		W Bleach Cleanable (10:1)
54" KIT 🔥📐☀️🍷🌟	57% Recycled Polyester, 43% Polyester	200,000	40 Hrs. Class 4.5		W Bleach Cleanable (10:1)
55" OATH 🔥📐☀️🍷🌟	50% Repreve® Post Consumer Recycled Polyester, 50% Polyester	204,000	40 Hrs. Class 5		W Bleach Cleanable (10:1)
57" SOLITAIRE 🔥📐☀️🍷🌟	50% Repreve® Post Consumer Recycled Polyester, 50% Polyester	200,000	40 Hrs. Class 4	.125" L .125" W	W Bleach Cleanable (10:1)
53" SYNERGY 🔥📐☀️🍷🌟	71% Repreve® Post Consumer Recycled Polyester, 29% Polyester	165,000	40 Hrs. Class 4		W Bleach Cleanable (10:1)

*ACT® Registered Certification Marks

EXPLANATION OF ACT ICONS FOR UPHOLSTERY

FIRE RETARDANCY 🔥	Flammability testing determined as fabric's resistance to burning. PASSES California 117-2013
COLORFASTNESS TO WET & DRY CROCKING 🍷	Colorfastness to wet & dry crocking refers to the rubbing off of color from the fabric onto clothing, hands or other materials and can occur under wet or dry conditions. PASSES AATCC 8-1974 Dry Crocking, Class 4 minimum; Wet Crocking, Class 3 minimum
COLORFASTNESS TO LIGHT ☀️	Colorfastness to light is the degree to which fabric will retain its color when exposed to light. PASSES AATCC 16A-1974 or AATCC 16E-1976; Class 4 minimum at 40 hours NOTE: Class 4 minimum at 60 hours is recommended for direct sunlight exposure situations
PHYSICAL PROPERTIES 🌟	3 physical property tests include: brush pill test to determine a fabric's pilling. Breaking/tensile strength is the ability of a fabric to withstand tension without breaking or tearing. Seam slippage is the pulling apart of fabrics at the seams. PASSES Brush Pill ASTM D3511, 3-4 minimum Breaking Strength ASTM D3597-D1682-64 (1975) 50 lbs. minimum in warp & weft Seam Slippage ASTM D3597-D434-75 25 lbs. minimum in warp & weft
ABRASION	Abrasion is the ability of a fabric to withstand damage from wear and rubbing. There is a general contract specification as well as a heavy duty specification. <div><div>📐</div><div>General Contract</div><div>PASSES ASTM 3597 modified (#10 cotton duck); 15,000 double rubs Wyzenbeek Method</div></div> <div><div>📐</div><div>Heavy Duty</div><div>ASTM 3597 modified (#10 cotton duck); 30,000 double rubs Wyzenbeek Method or ASTM D4966 (with 21 oz. weight); 40,000 rubs Martindale Method</div></div>

CLEANING CODE DEFINITIONS	W: Water-based foam or cleaner WS: Water-based cleaning agents or foam
----------------------------------	---



GREENGUARD Certified. CA Section 01350 compliant.
Eligible for CHPS Low-Emitting Material Credits.
(Excludes Polyurethanes)

For memo samples please contact.
MOMENTUM
TEXTILES
Canada 905-670-5002
Toll Free 800-366-6839
memosamples.com

krug