

SUSTAINABLE PERFORMANCE

MOMENTUM
T E X T I L E S

SUSTAINABLE PERFORMANCE CRYPTON® + PU

krug
TEXTILES

solutions@krug.ca | www.krug.ca | 1.888.578.5784

SPECIFICATIONS

Width - Pattern	Fiber Content & Backing	Abrasion (D.R.)	Light-fastness	Approx. Repeats	Cleaning Code
54" BEELINE 🔥📐☀️🍷🌟	100% Polyurethane / PVC Free Polyester Backing	500,000	200 Hrs. Class 4.5		W Bleach Cleanable (4:1)
54" BRAVO II 🔥📐☀️🍷🌟	100% Polyurethane / PVC Free Polyester Backing	500,000	200 Hrs. Class 4.5		W Bleach Cleanable (4:1)
54" CANTER 🔥📐☀️🍷🌟	100% Polyurethane / PVC Free Polyester Backing	240,000	200 Hrs. Class 4.5		W Bleach Cleanable (4:1)
59" COVER CLOTH 🔥📐☀️🍷🌟	56% Repreve® Post Consumer Recycled Polyester, 44% Polyester	200,000	40 Hrs. Class 4		W Bleach Cleanable (10:1)
54" FRINGE 🔥📐☀️🍷🌟	100% Polyurethane / PVC Free Polyester Backing	145,000	200 Hrs. Class 4.5	17" W	W Bleach Cleanable (4:1)
54" NIFTY 🔥📐☀️🍷🌟	100% Polyurethane / PVC Free Polyester Backing	500,000	200 Hrs. Class 4.5		W Bleach Cleanable (4:1)
54" ROW 🔥📐☀️🍷🌟	100% Polyurethane / PVC Free Polyester Backing	500,000	200 Hrs. Class 4.5	Shown Railroaded	W Bleach Cleanable (4:1)
53" SYNERGY 🔥📐☀️🍷🌟	71% Post Consumer Recycled Polyester, 29% Polyester	165,000	40 Hrs. Class 4		W Bleach Cleanable (10:1)

*ACT® Registered Certification Marks

EXPLANATION OF ACT ICONS FOR UPHOLSTERY

FIRE RETARDANCY 🔥📐	Flammability testing determined as fabric's resistance to burning. PASSES California 117-2013
COLORFASTNESS TO WET & DRY CROCKING 🍷🍷	Colorfastness to wet & dry crocking refers to the rubbing off of color from the fabric onto clothing, hands or other materials and can occur under wet or dry conditions. PASSES AATCC 8-1974 Dry Crocking, Class 4 minimum; Wet Crocking, Class 3 minimum
COLORFASTNESS TO LIGHT ☀️	Colorfastness to light is the degree to which fabric will retain its color when exposed to light. PASSES AATCC 16A-1974 or AATCC 16E-1976; Class 4 minimum at 40 hours NOTE: Class 4 minimum at 60 hours is recommended for direct sunlight exposure situations
PHYSICAL PROPERTIES 🌟	3 physical property tests include: brush pill test to determine a fabric's pilling. Breaking/tensile strength is the ability of a fabric to withstand tension without breaking or tearing. Seam slippage is the pulling apart of fabrics at the seams. PASSES Brush Pill ASTM D3511, 3-4 minimum Breaking Strength ASTM D3597-D1682-64 (1975) 50 lbs. minimum in warp & weft Seam Slippage ASTM D3597-D434-75 25 lbs. minimum in warp & weft
ABRASION <div><div>📐</div><div>General Contract</div></div> <div><div>📐</div><div>Heavy Duty</div></div>	Abrasion is the ability of a fabric to withstand damage from wear and rubbing. There is a general contract specification as well as a heavy duty specification. PASSES <div><div>📐</div><div>General Contract</div></div> ASTM 3597 modified (#10 cotton duck); 15,000 double rubs Wyzenbeek Method <div><div>📐</div><div>Heavy Duty</div></div> ASTM 3597 modified (#10 cotton duck); 30,000 double rubs Wyzenbeek Method or ASTM D4966 (with 21 oz. weight); 40,000 rubs Martindale Method

CLEANING CODE DEFINITIONS	W: Water-based foam or cleaner
---------------------------	--------------------------------

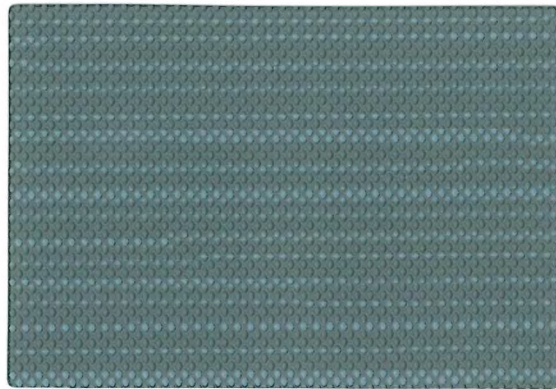


GREENGUARD Gold Certified. CA Section 01350 compliant.
Eligible for CHPS Low-Emitting Material Credits.
(Excludes Polyurethanes)

krug
TEXTILES

solutions@krug.ca | www.krug.ca | 1.888.578.5784

For memo samples please contact.
MOMENTUM
T E X T I L E S
Canada 905-670-5002
Toll Free 800-366-6839
memosamples.com



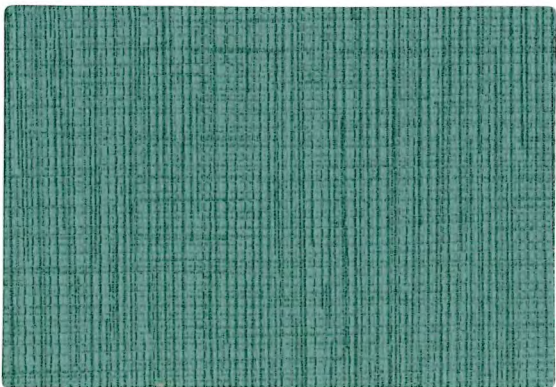
Row Cloud
09155859



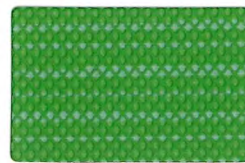
Cover Cloth Platinum
09137654



Canter Quarry
09130504



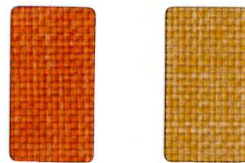
Beeline Geyser
09125576



Leaf
09155947



Organic
09156024



Zest
09137742



Savor
09137665



Safari
09109406



Night
09108306



Sprout
09125642



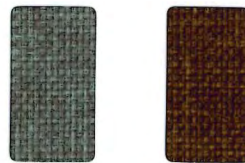
Portobello
09125620



Fusion
09155914



Zest
09156112



Vesper
09137720



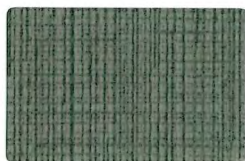
Indigo
09137610



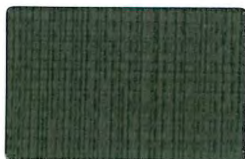
Sable
09109395



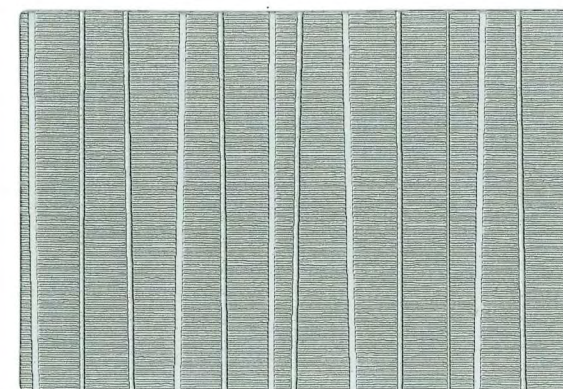
Onyx
09108339



Forge
09125554



Eclipse
091025532



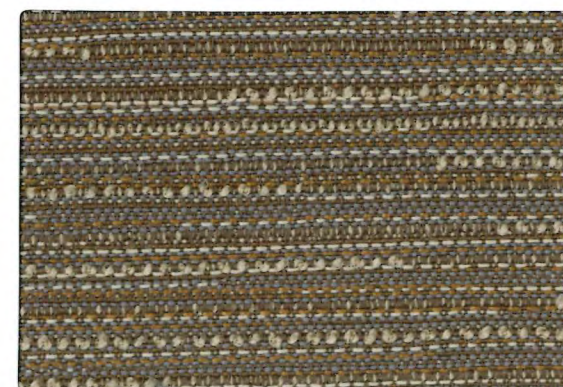
Fringe Platinum
09168377



Nifty Pool
09166078



Bravo II Cinder
09135696



Synergy Bedrock
09154825



Travertine
09166177



Wasabi
09166199



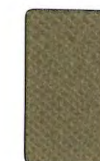
Hematite
09134332



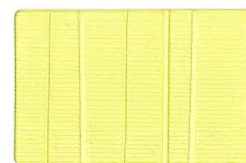
Night
09134354



Sun
09166155



Trek
09166188



Zing
09168410



Azurite
09168256



Koi
09166034



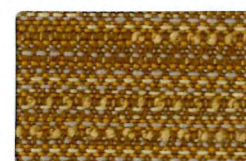
Dynamo
09165990



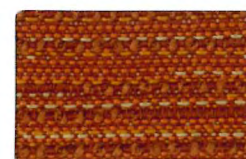
Dusk
09134321



Mica
09134343



Pecan
09154891



Tango
09154924



Papyrus
09168366



Cinder
09168300



Solstice
09166144



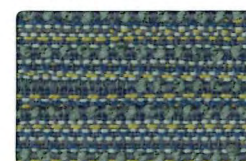
Root
09166122



Driftwood
09134475



Black
09134310



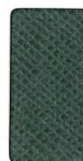
Aegean
09154792



Balsamic
09154803



Surge
09166166



Slate
09164945