

TECHNICAL INFORMATION

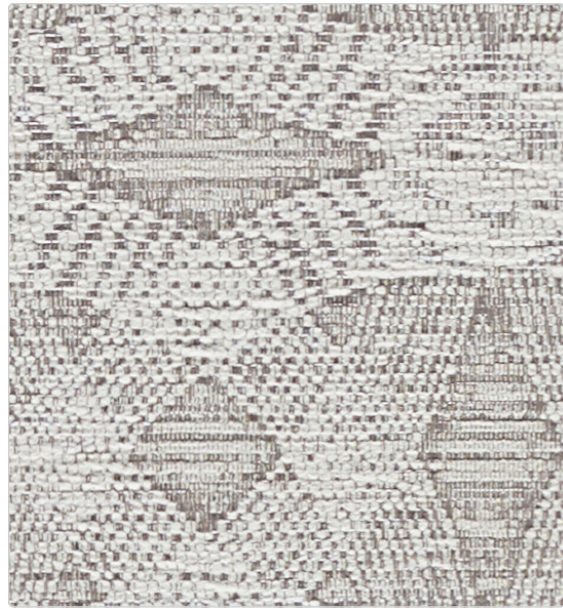
54" Pattern	Approx. Repeat	Fiber Content & Finish	Abrasion (Wyzenbeek)	Lightfastness (AATCC Method 16)	Cleaning Code
ABERDEEN©	V-27" H-27"	100% Vinyl Face, 100% Hi-Loft™ Polyester Back PFOS, PFOA Free Stain Resistant	300,000 D.R.	200 hours	WS/BC
APOLLO	V-none H-none	100% Polyester CRYPTON®	150,000 D.R.	40 hours	WS/BC
AROUND©	V-6 ½" H-7 ¼"	79% Polyester, 21% Nylon CRYPTON®	100,000 D.R.	40 hours	WS/BC
ATMOSPHERE	V-none H-none	100% Polyester Stain Resistant, Acrylic Backing	150,000 D.R.	40 hours	WS
DELPHI©	V-none H-none	78% Polyester, 21% PCR Polyester, 1% Nylon Stain Resistant, Acrylic Backing	140,000 D.R.	60 hours	WS/BC
EMERSON	V-none H-none	100% Polyester Stain Resistant, Acrylic Backing	150,000 D.R.	40 hours	WS
FRAGMENT©	V-10 ¼" H-10"	100% Polyurethane Face, 100% Polyester Back WriteOut® Ink Resistant	300,000 D.R.	200 hours	WS/BC
INSIGHT	V-none H-none	100% Phthalate Free Vinyl Face, 100% Polyester Back Stain Resistant	300,000 D.R.	200 hours	WS/BC
INTERSTATE©	V-4 ¼" H-4 ½"	67% PCR Polyester, 33% Solution-Dyed Nylon Stain Resistant, Acrylic Backing	150,000 D.R.	40 hours	WS/BC
IONA©	V-4" H-7 ½"	100% Polyester CRYPTON®	110,000 D.R.	40 hours	WS/BC
LORE	V-none H-none	100% Polyurethane Face, 100% Polyester Back WriteOut® Ink Resistant	300,000 D.R.	200 hours	WS/BC
PALATINE 2	V-none H-none	65% Polyester, 35% Rayon CRYPTON®	150,000 D.R.	40 hours	WS
ROGUE	V-none H-none	48% Polyester, 33% PIR Polyester, 19% PCR Polyester CRYPTON® green	150,000 D.R.	40 hours	WS/BC
SHERLOCK 2	V-none H-none	73% Polyester, 27% Viscose alta™ performance technology, Acrylic Backing	150,000 D.R.	40 hours	WS
SOLITUDE	V-none H-none	100% Polyurethane Face, 100% Polyester Back WriteOut® Ink Resistant	300,000 D.R.	200 hours	WS/BC
TRAVERSE©	V-9 ¾" H-5"	56% PCR Polyester, 23% Polyester, 21% Solution-Dyed Nylon CRYPTON®	150,000 D.R.	40 hours	WS/BC
WATSON	V-none H-none Shown Railroaded	68% Olefin, 32% Polyester Stain Resistant, Acrylic Backing	110,000 D.R.	40 hours	WS/BC

Cleaning Codes:
 WS - Water based cleaning agents or foam may be used.
 BC - May be cleaned with bleach following the proper ratio of water and bleach.
 Cleaning by a professional service is recommended.

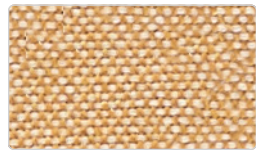
This card represents only a select sampling of the Arc|Com fabrics available. For the complete selection of patterns and colorways and/or samples of our specific fabrics visit our website at arc-com.com or contact Arc|Com.

See Arc|Com Textile samples for specific technical data.
 Multiple factors affect fabric durability and appearance retention, including end-user application and proper maintenance.
 Wyzenbeek results above 100,000 double rubs have not been shown to be an indicator of increased lifespan.

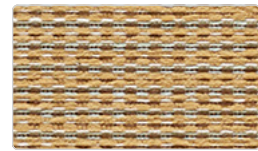




Iona
AC-63740 Cloud #1



Emerson
AC-63383 Wheat #14



Palatine 2
AC-61212 Wheat #19



Solitude
AC-62499 Mocha #20



Insight
AC-63525 Cinnamon #6



Aberdeen
AC-63653 Espresso #14



Atmosphere
AC-63892 Beach #13



Palatine 2
AC-61211 Beach #18



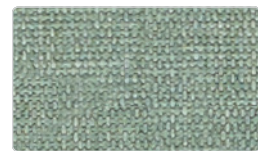
Solitude
AC-62482 Putty #3



Atmosphere
AC-63891 Cocoa #12



Around
AC-63833 Grain #4



Insight
AC-63544 Herb #25



Insight
AC-63541 Fir #22



Delphi
AC-61320 Pebble #1



Rogue
AC-62541 Fog #2



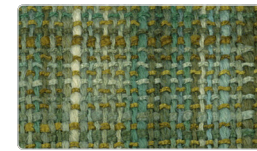
Atmosphere
AC-63895 Ash #16



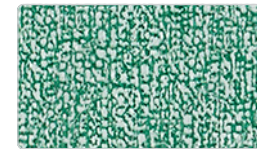
Insight
AC-63553 Pewter #34



Watson
AC-63924 Lemon #5



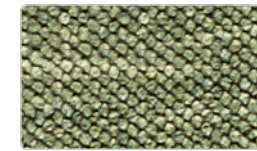
Apollo
AC-63359 Grass #10



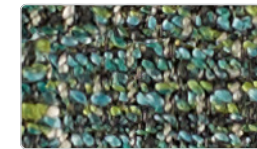
Lore
AC-62477 Grass #8



Insight
AC-63522 Citrine #3



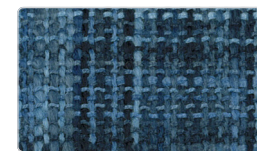
Atmosphere
AC-63881 Grass #2



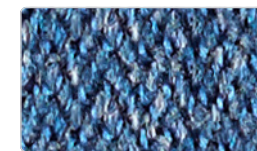
Sherlock 2
AC-63133 Bluegrass #20



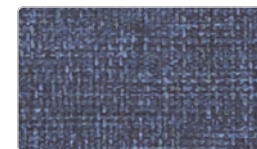
Traverse
AC-63440 Caribbean #1



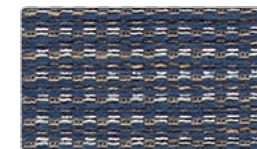
Apollo
AC-63357 Ocean #8



Watson
AC-63928 Blueberry #9



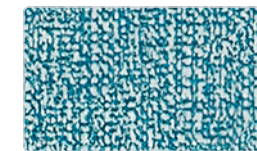
Insight
AC-63533 Denim #14



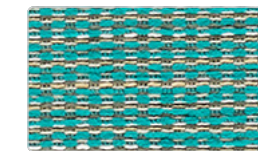
Palatine 2
AC-61230 Indigo #37



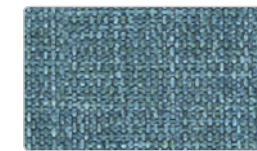
Interstate
AC-63678 Herb #9



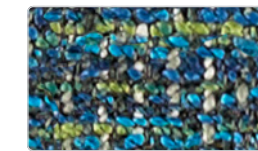
Lore
AC-62478 Teal #9



Palatine 2
AC-61227 Teal #34



Insight
AC-63543 Caribbean #24



Sherlock 2
AC-63132 Ocean #19



Fragment
AC-63191 Indigo #12