

krug
TEXTILES

SPECTRUM COLLECTION



MAYERFABRICS



THEORY
423-037 Alabaster



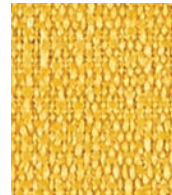
CONTINUUM
422-026 Dove



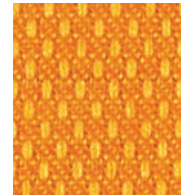
THEORY
423-016 Charcoal



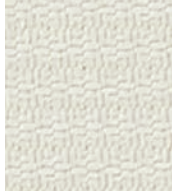
THEORY
423-017 Stone



CONTINUUM
422-002 Saffron



VARIANT
425-019 Orange Peel



PRISM
426-027 Zinc



PRISM
426-026 Dove



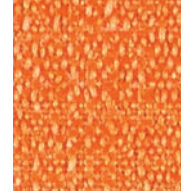
CONTINUUM
422-036 Iron



CONTINUUM
422-027 Stone



PRISM
426-002 Topaz



CONTINUUM
422-009 Mandarin



THEORY
423-026 Dove



VARIANT
425-016 Flint



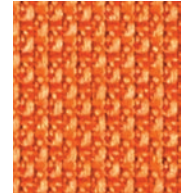
PRISM
426-016 Charcoal



PRISM
426-017 Stone



VARIANT
425-002 Mustard



OPTIC
424-009 Sunrise



VARIANT
425-017 Creme



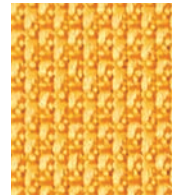
OPTIC
424-026 Elephant



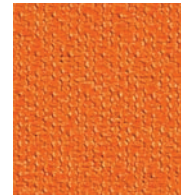
OPTIC
424-006 Ash



THEORY
423-010 Mocha



OPTIC
424-019 Tangerine



THEORY
423-009 Mango



CONTINUUM
422-017 Almond



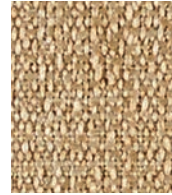
VARIANT
425-026 Aluminum



VARIANT
425-006 Carbon



PRISM
426-010 Mocha



CONTINUUM
422-007 Cafe Au Lait



PRISM
426-021 Tomato



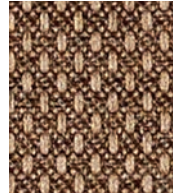
VARIANT
425-007 Biscuit



CONTINUUM
422-016 Charcoal



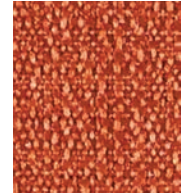
CONTINUUM
422-006 Onyx



VARIANT
425-000 Chocolate



THEORY
423-007 Cafe Au Lait



CONTINUUM
422-019 Brick



OPTIC
424-017 Fieldstone



OPTIC
424-016 Coal



THEORY
423-006 Onyx



CONTINUUM
422-000 Espresso



VARIANT
425-010 Cocoa



PRISM
426-019 Clay



OPTIC
424-007 Mushroom



PRISM
426-006 Onyx



OPTIC
424-000 Brown Bear



THEORY
423-000 Espresso

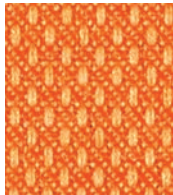


PRISM
426-007 Cafe Au Lait

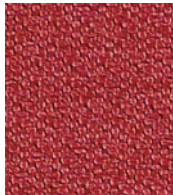


THEORY
423-019 Tobacco

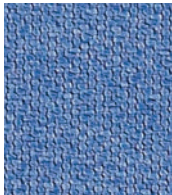
Additional colors are available. Please refer to the Mayer Fabrics website.



VARIANT
425-009 Persimmon



THEORY
423-011 Rouge



THEORY
423-024 Slate



PRISM
426-034 Cerulean



CONTINUUM
422-023 Citrine



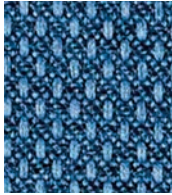
VARIANT
425-013 Jungle



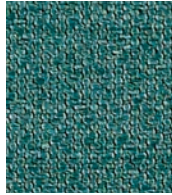
PRISM
426-009 Clementine



VARIANT
425-005 Aubergine



VARIANT
425-004 Ink



THEORY
423-044 Teal



OPTIC
424-013 Green Apple



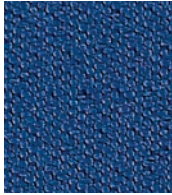
PRISM
426-003 Kale



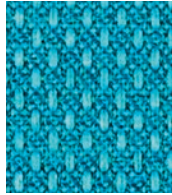
PRISM
426-011 Claret



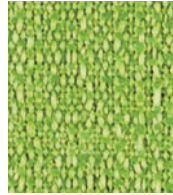
THEORY
423-008 Port



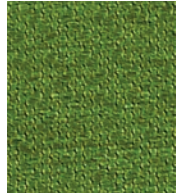
THEORY
423-014 Indigo



VARIANT
425-014 Prussian



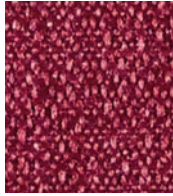
CONTINUUM
422-003 Spring



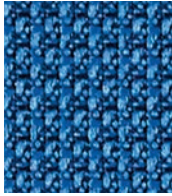
THEORY
423-003 Grass



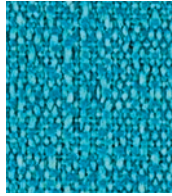
VARIANT
425-001 Barn Red



CONTINUUM
422-008 Beet



OPTIC
424-004 Yale



CONTINUUM
422-044 Ocean



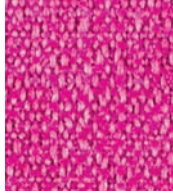
OPTIC
424-023 Springtime



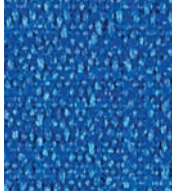
PRISM
426-013 Olive



OPTIC
424-011 Red



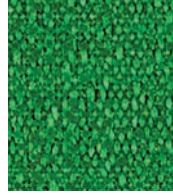
CONTINUUM
422-005 Magenta



CONTINUUM
422-014 Electric



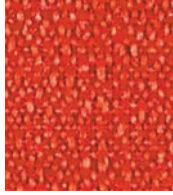
THEORY
423-034 Peacock



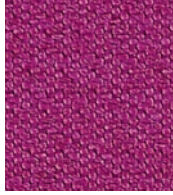
CONTINUUM
422-013 Emerald



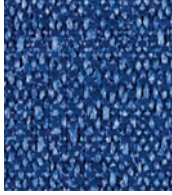
THEORY
423-023 Grove



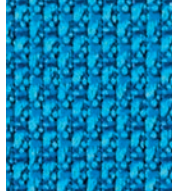
CONTINUUM
422-001 Lipstick



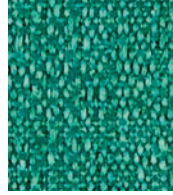
THEORY
423-015 Raspberry



CONTINUUM
422-004 Indigo



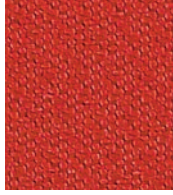
OPTIC
424-024 Ocean



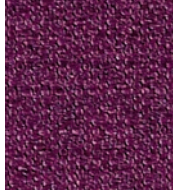
CONTINUUM
422-033 Pine



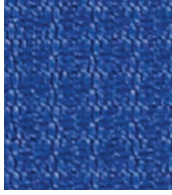
PRISM
426-023 Asparagus



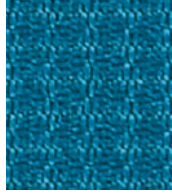
THEORY
423-001 Lipstick



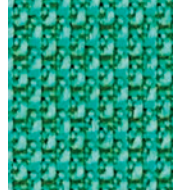
THEORY
423-005 Aubergine



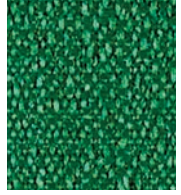
PRISM
426-004 Indigo



PRISM
426-024 Caribbean



OPTIC
424-033 Myrtle



CONTINUUM
422-043 Bottle



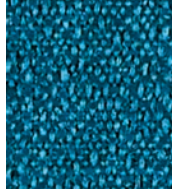
PRISM
426-001 Lipstick



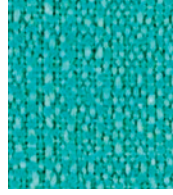
PRISM
426-005 Plum



THEORY
423-004 Navy



CONTINUUM
422-024 Caribbean



CONTINUUM
422-034 Turquoise



THEORY
423-013 Evergreen

Additional colors are available. Please refer to the Mayer Fabrics website.

TECHNICAL INFORMATION

Spectrum Collection

Pattern 54"	Content and Backing	Certifications	Weight/ Linear Yd.	Pattern Repeat	Finish	Abrasion Wyzenbeek	Light- Fastness	Flammability	Cleaning Code
CONTINUUM <i>Directional</i>	100% Post-Consumer Recycled Polyester Backing: Latex	GREENGUARD Gold	15 oz.	0.50" H, 0.59" V	Stain Repellent	130,000 [^] Double Rubs	40 hours	Cal. 117-2013 NFPA 260/UFAC Class 1 ASTM E84 (Unadhered) Class 1 or A	WS
OPTIC <i>Directional</i>	83% Post-Consumer Recycled Polyester 17% Polyester Backing: Latex	GREENGUARD Gold	16.5 oz.	0.33" H, 0.20" V	Stain Repellent	185,000 [^] Double Rubs	40 hours	Cal. 117-2013 NFPA 260/UFAC Class 1 ASTM E84 (Unadhered) Class 1 or A	WS
PRISM <i>Directional</i>	75% Post-Consumer Recycled Polyester 25% Polyester Backing: Latex	GREENGUARD Gold	14.5 oz.	0.17" H, 0.20" V	Stain Repellent	105,000 [^] Double Rubs	40 hours	Cal. 117-2013 NFPA 260/UFAC Class 1 ASTM E84 (Unadhered) Class 1 or A	WS
THEORY <i>Directional</i>	75% Post-Consumer Recycled Polyester 25% Polyester Backing: Latex	GREENGUARD Gold	14.5 oz.	0.17" H, 0.39" V	Stain Repellent	150,000 [^] Double Rubs	40 hours	Cal. 117-2013 NFPA 260/UFAC Class 1 ASTM E84 (Unadhered) Class 1 or A	WS
VARIANT <i>Directional</i>	75% Post-Consumer Recycled Polyester 25% Polyester Backing: Latex	GREENGUARD Gold	14.5 oz.	0.17" H, 0.20" V	Stain Repellent	140,000 [^] Double Rubs	40 hours	Cal. 117-2013 NFPA 260/UFAC Class 1 ASTM E84 (Unadhered) Class 1 or A	WS

REDUCED ENVIRONMENTAL IMPACT

These products are GREENGUARD Gold Certified for low chemical and particle emissions to UL standard UL 2818 and may contribute to LEED certification. For complete information visit mayerfabrics.com and UL.com/gg.

Continuum



CARE AND CLEANING INFORMATION

WS: Water/Solvent Cleaner

ADDITIONAL INFORMATION

CAL TB 133: All patterns may comply with California Technical Bulletin 133 when combined with appropriate components.

^Abrasion: Multiple factors affect fabric durability and appearance retention, including end-user application and proper maintenance. Wyzenbeek results above 100,000 double rubs have not been shown to be a reliable indicator of increased fabric lifespan.

Custom Capabilities: All patterns can be custom colored. Minimum yardage applies.

Specifications: Specifications are correct at the time of printing. Additional specifications are available on our website.



These fabrics meet or exceed these ACT performance guidelines. *Certification Marks owned by ACT®



Water and Stain
Repellent Finish



This 100% polyester fabric is included in the Underwriter's Laboratory Fabric Recognition Program. Additional testing of this U.L. recognized component is not required on approved panels from participating manufacturers.

krug
TEXTILES

