

Krug Supply Arrangements



krug

... Advancing Design Through Innovation

Proudly Canadian



Founded by Hartman Krug in 1880, Krug Inc still operates in the Heartland of Southern Ontario boasting of over 140 years of producing high quality office furnishings that can be found in workspaces all across North America.



krug

... Advancing Design Through Innovation

Table of Contents

Programs and Contacts	4
Seating	5
Categories 2 and 4 - Height Adjustable Work Surfaces and Wood Veneer Freestanding	7
Category 6 - Support Space Furniture Meeting-Training Room Tables	8
Category 6 - Support Space Furniture Collaborative Tables	10
Category 6 - Support Space Furniture Credenza	13
Category 6 - Support Space Furniture Soft Seating and Screens	14
Category 6 - Support Space Furniture Kitchenette Chairs	17
Category 6 - Support Space Furniture Open Area Workspace	19
Wood Finishes	20
Fabrics	22
Laminates	23
Krug and Environment	24
Terms	27



Programs and Contacts

Krug Supply Arrangement - Seating: E60PQ-120001/H
Krug Supply Arrangement - Furniture for Work Spaces: E60PQ-140003/037/PQ

General Inquiries:

Kristen Carter
1-888-578-5784 ext. 230
kcarter@krug.ca

Receiving bid solicitations:

Maggie Siwek
1-888-578-5784 ext. 228
bidspec@krug.ca

Website: www.krug.ca
Supplier's Official Language: English
Payment by Visa or Mastercard: Accepted
Supplier's Work Coverage: National

Seating: E60PQ-120001/H



Corfu



Aqua



Karma



Callisto



Mobi

Seating: E60PQ-120001/H



C5



Dorso T



Dorso N

Seating: E60PQ-120001/H



Dorso S



Dorso E



Dorso Guest



Dorso Weave

Categories 2 and 4 - Height Adjustable Work Surfaces and Wood Veneer Freestanding

Furniture for Work Spaces: E60PQ-140003/037/PQ



Category 6 - Support Space Furniture Meeting-Training Room Tables

Furniture for Work Spaces: E60PQ-140003/037/PQ



Revo

Category 6 - Support Space Furniture Meeting-Training Room Tables

Furniture for Work Spaces: E60PQ-140003/037/PQ



Category 6 - Support Space Furniture Collaborative Tables

Furniture for Work Spaces: E60PQ-140003/037/PQ



Category 6 - Support Space Furniture Collaborative Tables

Furniture for Work Spaces: E60PQ-140003/037/PQ



Chit Chat



Chit Chat

Category 6 - Support Space Furniture Collaborative Tables

Furniture for Work Spaces: E60PQ-140003/037/PQ



Cressida



Leyton



Virtu



Zola



Karma



Millennium



Category 6 - Support Space Furniture Credenza

Furniture for Work Spaces: E60PQ-140003/037/PQ



Artemis Credenza

Category 6 - Support Space Furniture Soft Seating and Screens

Furniture for Work Spaces: E60PQ-140003/037/PQ



Zola Privacy

Category 6 - Support Space Furniture Soft Seating and Screens

Furniture for Work Spaces: E60PQ-140003/037/PQ



Zola Seatables



Leyton Lounge

Category 6 - Support Space Furniture Soft Seating and Screens

Furniture for Work Spaces: E60PQ-140003/037/PQ



Sutton Lounge



Category 6 - Support Space Furniture Soft Seating and Screens

Furniture for Work Spaces: E60PQ-140003/037/PQ



Carlyle Lounge



Brio Lounge

Category 6 - Support Space Furniture Soft Seating and Screens

Furniture for Work Spaces: E60PQ-140003/037/PQ



Avatar



Sloane



Sloane

Category 6 - Support Space Furniture Soft Seating and Screens

Furniture for Work Spaces: E60PQ-140003/037/PQ



Faeron Lounge



Category 6 - Support Space Furniture Soft Seating and Screens

Furniture for Work Spaces: E60PQ-140003/037/PQ



Jordan Lounge



Category 6 - Support Space Furniture Soft Seating and Screens

Furniture for Work Spaces: E60PQ-140003/037/PQ



Zola Privacy, Corfu and Chit Chat

Category 6 - Support Space Furniture Soft Seating and Screens

Furniture for Work Spaces: E60PQ-140003/037/PQ



Zola Privacy Banquette and Chit Chat

Category 6 - Support Space Furniture Kitchenette Chairs

Furniture for Work Spaces: E60PQ-140003/037/PQ



Corfu



Capri



Category 6 - Support Space Furniture Kitchenette Chairs

Furniture for Work Spaces: E60PQ-140003/037/PQ



Karma Counter Height



Corfu Barstool



Manolo Barstool

Category 6 - Support Space Furniture Open Area Workspace

Furniture for Work Spaces: E60PQ-140003/037/PQ



Zola Privacy

Standard Finishes

Cherry



Light Cherry



Natural Cherry



American Cherry



Medium Cherry



Appalachian Cherry



Imperial Cherry



Sable Cherry



Standard Cherry

Rift Oak*



Light Oak



Harvest Oak



Mellow Oak



Walnut Oak



Medium Cherry Oak



Mahogany on Oak



Espresso Oak



SilverGrey on Oak*

Standard Finishes

Maple



Clear Maple



Wheat Maple



Honey Maple

Walnut



Natural Walnut



Regular Walnut



Mahogany Walnut



Cordovan Walnut



Dark Walnut

Palette Solid Color



White



Sand



Soft Green



Steel Blue



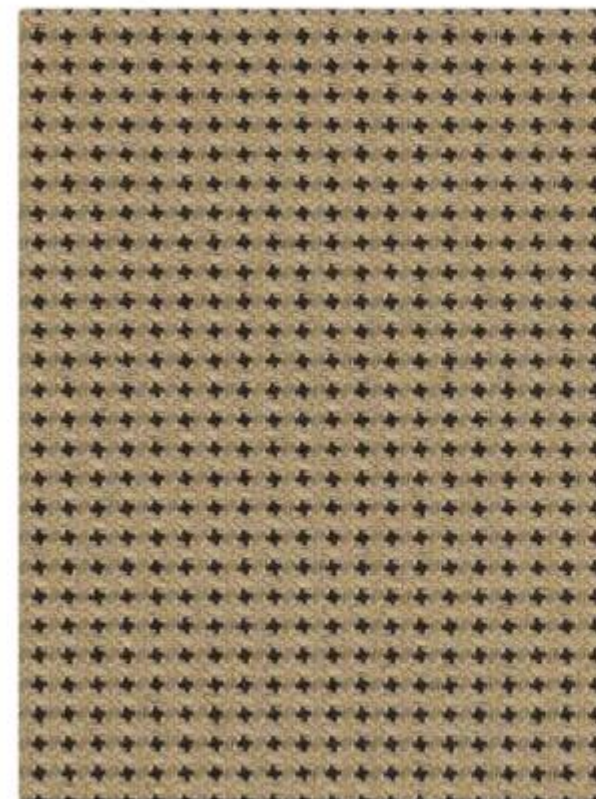
Slate



Black

Krug Textiles – Fabric Program

EXPO | GRADE 1



Latte
09086812



Festive
09089790



Viola
09086845



Lemon
09092620



Zest
09092631



Raspberry
09092642



Spirit
09092675



Sky
09086834



Sprout
09092653



Oasis
09092664



Leaf
09086823



Fog
09086801



Tuxedo
09087725

FUSE | GRADE 1



Pepper
09123387



Lunar
09123354



Azurean
09123299



Malted
09123365



Pristine
09123409



Cress
09123321



Iris
09123343



Walnut
09123431



Saffron
09123420



Morel
09123376



Pimento
09123398

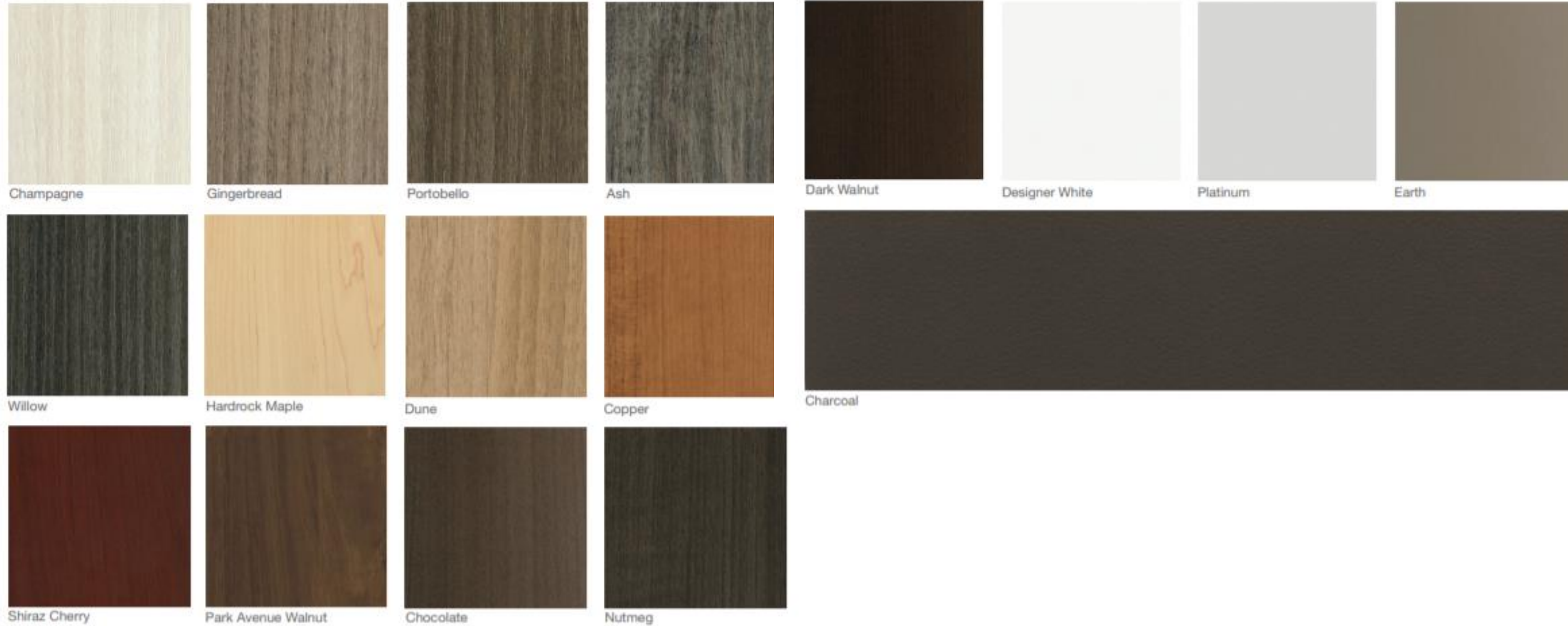


Ginger
09123332



Carmine
09123310

Standard Laminate Program



krug and the environment

Krug is committed to:

- Conducting business in a socially acceptable and responsible manner.
- Incorporating sustainability and environmentally responsible practices in all activities throughout Krug.
- Ensuring it's Management team supports and promotes all environmental objectives and procedures set forth in this policy.
- Using, recycling and reducing/eliminating waste materials wherever possible throughout the company.
- Allocating and sustaining adequate resources for the effective management of all necessary current and future environmental program requirements.
- Pollution prevention to land, air and water by ensuring legal compliance with all legislation and good business practices and pursuing end of life use for all products to reduce waste destined to landfill.
- Promote life-cycle thinking throughout all aspects of environmental matters.
- Developing supporting procedures and goals based on the needs and objectives. These procedures and goals will be communicated throughout Krug.

Certifications





33