

ELEVATE

Performance Fabrics for
Healing Environments

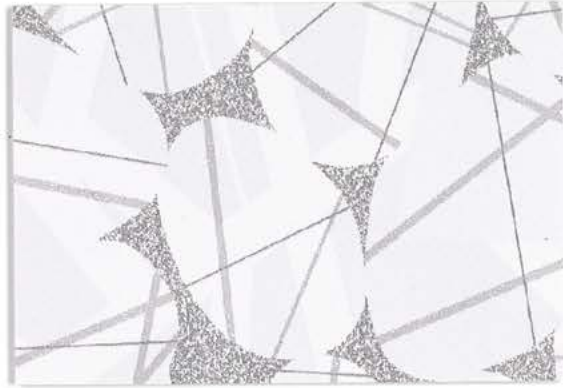
krug
TEXTILES

Stinson

Riverstone



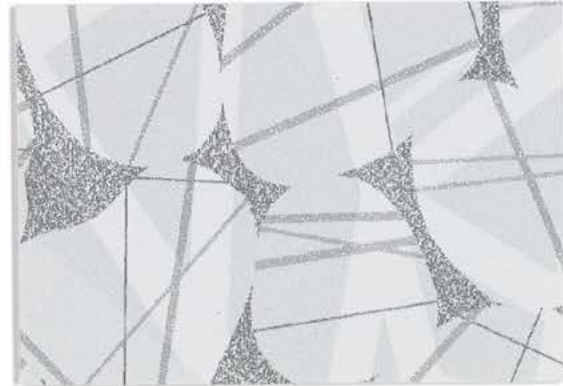
RVR10 Beryl



RVR13 Pearl



RVR18 Water



RVR15 Mineral

Arbor



ARB52 Breeze



ARB51 Marina



ARB56 Spice



ARB54 Stone

Weft



WEF17 Breeze



WEF21 Dusk



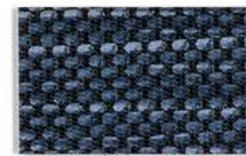
WEF10 Bisque



WEF13 Salvia



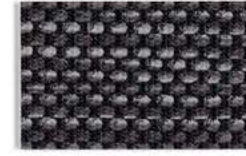
WEF23 Jungle



WEF22 Indigo



WEF19 Clay



WEF25 Incense

Vector



VEC18 Parallel



VEC17 Blue



VEC13 Spice



VEC14 Ray

Lattice



LAT14 Bayou



LAT15 Skipper



LAT13 Rosewood



LAT19 Metro

Nishiki 2.0



NIH256 Celadon



NIH282 Tranquil



NIH276 Lychee



NIH253 Gyoza



NIH283 Heron



NIH280 Dragon



NIH274 Udon



NIH266 Peacock



NIH270 Shibori



NIH279 Orchid



NIH252 Soba



NIH291 Imperial



NIH260 Obi



NIH250 Plum



NIH255 Silver

Lunaria



LUN51 Bergamot



LUN54 Essence



LUN53 Hyssop



LUN55 Sesame

Lara



LRA100 Wizard



LRA81 Athens



LRA73 Pumice



LRA75 Tawny



LRA85 Lake



LRA82 Titanium



LRA92 Mink



LRA95 Tranquil



LRA99 Mid-Blue



LRA86 Gate



LRA91 Kitten



LRA90 Bahama



LRA104 Evening



LRA87 Haze



LRA101 Tempest

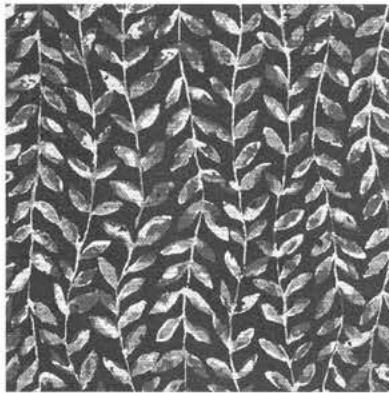
PERFORMANCE

- Fluid-barrier protection
- Extreme durability: 100,000 to 1,300,000 double rubs
- Advanced soil + stain protection
- Denim Stain Resistant
- CFFA-Healthcare-201 Certified* (*Patterns Arbor, Lara, Lattice, Nishiki 2.0, Riverstone, Vector, Weft*)

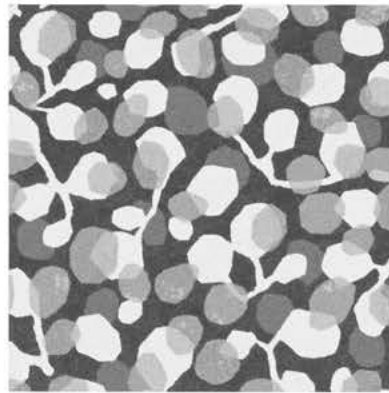
*CFFA-Healthcare-201 Certified: This certification provides specifiers confidence in identifying Appropriate Coated Fabrics for Healthcare, Education, and other environments that demand Durability and Cleanability.

SUSTAINABILITY

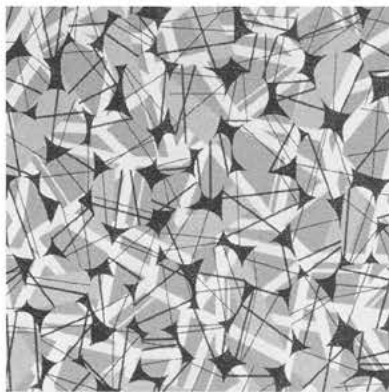
- GREENGUARD certified
- REACH and RoHS Compliant
- No PFAS, fluorocarbons or perfluorinated compounds
- No added flame retardants or antimicrobials
- Formulated without Phthalates



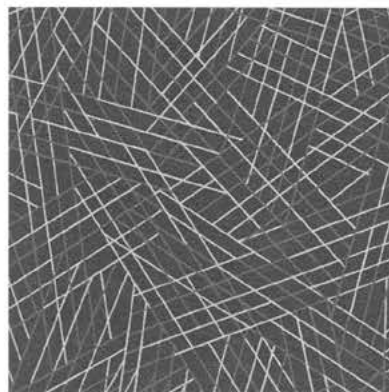
Arbor



Lunaria




Riverstone



Vector

Pattern	Content	Finish	Repeat	Abrasion
Arbor	Non-Phthalate Vinyl Surface with Polyester Backing	Advanced Soil and Stain Resistant Top Coat	11.5" V X 9" H Directional	1,300,000 dr A ◊
Lara	Non-Phthalate Vinyl Surface with Polyester Backing	Advanced Soil and Stain Resistant Top Coat	None	1,300,000 dr A ◊
Lattice	Non-Phthalate Vinyl Surface with Polyester Backing	Advanced Soil and Stain Resistant Top Coat	18" V X 18" H Directional	1,300,000 dr A ◊
Lunaria	Non-Phthalate Vinyl Surface with Polyester Backing	Advanced Soil and Stain Resistant Top Coat	11.375" V X 13.875" H Directional	250,000 dr A ◊
Nishiki 2.0	Non-Phthalate Vinyl Surface with Polyester Knit Backing	Advanced Soil and Stain Resistant Top Coat	None	250,000 dr A ◊
Riverstone	Non-Phthalate Vinyl Surface with Polyester Backing	Advanced Soil and Stain Resistant Top Coat	18" V X 16.875" H Directional	1,300,000 dr A ◊
Vector	Non-Phthalate Vinyl Surface with Polyester Backing	Advanced Soil and Stain Resistant Top Coat w/ ink resistance	11.875" V X 11.25" H Directional	100,000 dr A ◊
Weft	Non-Phthalate Vinyl Surface with Polyester Backing	Advanced Soil and Stain Resistant Top Coat	None	1,300,000 dr A ◊

Flammability	All patterns meet or exceed the flammability requirements of California Technical Bulletin, 117-2013, Section 1. Patterns have been tested for other flammability specifications. Please visit cfstinson.com for comprehensive test results.
Other Performance Characteristics	These patterns meet or exceed these ACT Performance standards for Upholstery: 
Width	54" (137 cm)
Memo Samples	Visit the Stinson See/Sample/Spec to view all Stinson patterns, with their respective Krug grade, and order memo samples at Krug.Ca . Click on 'Graded-in' under the 'Textiles' Section.
Care and Maintenance	Consult cfstinson.com or call 800.841.6279.

Reduced Environmental Impact

GREENGUARD certification



Cleaning and Maintenance

Cleaning Code (*Arbor, Lara, Lattice, Lunaria, Riverstone, Vector, Weft*) : (W) Clean with water-based foam or water-based cleaners only. Do not use solvents. We recommend using a professional cleaning service.

Cleaning Code (*Nishiki 2.0*) : (W-S) For water-based stains use water-based cleaners. For oil-based stains use solvent-based cleaners. We recommend using a professional cleaning service.

Bleach solutions of up to 10% may be used for more difficult stains.

Tested and approved for compatibility with a multitude of disinfectants and cleaners. Individual Care Guides for each pattern are available at cfstinson.com

krug
TEXTILES

421 Manitou Drive
Kitchener, Ontario, Canada
N2C 1L5
1.888.578.KRUG
solutions@krug.ca

Stinson

C.F. Stinson, LLC
2849 Product Drive
Rochester Hills, MI 48309

w cfstinson.com
p 800 841 6279
f 248 299 3884