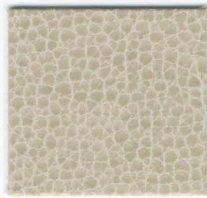
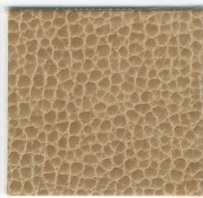


EVOLUTION | ULTRA COLLECTION

EVOLUTIONARY SERIES



Rugged Stone



Rugged Dune



Rugged Earthbound



Bermuda Castle
Harbour



Bermuda Surfside
Beach



Bermuda Sugar
Cane



Bermuda
Horseshoe Bay



Enthusiast Cigar



Enthusiast Biking



Enthusiast Boating

ULTRA SERIES™



Ultrachevron Creme



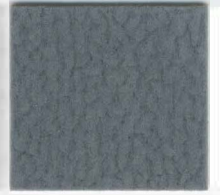
Ultraposh Desert



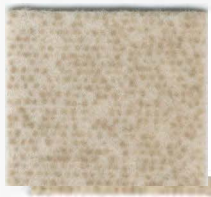
Ultrachevron Acorn



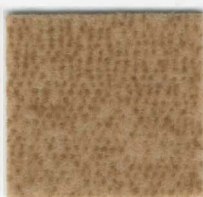
Ultrachevron Storm



Ultraposh Polaris



Ultraflannel Sesame



Ultraflannel Hazelnut



Ultraposh Maple



Ultraflannel Pewter



Ultraposh Marine

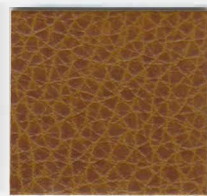
RYDER



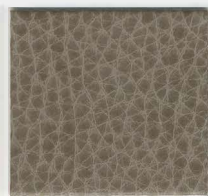
Snow



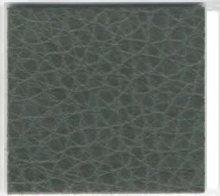
Foal



Bristol



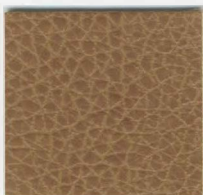
Windy



Gulfstream



Moccasin



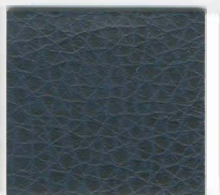
Wheat



Derby



Chimney



Thistledown

**EVOLUTIONARY SERIES (BERMUDA, ENTHUSIAST, RUGGED)
 ULTRA SERIES (ULTRAPOSH, ULTRACHEVRON, ULTRAFLANNEL)
 RYDER**

Width	54"
Content	Evolutionary Series: 100% Polyurethane (Polycarbonate) Ultraposh: 54% Acrylic, 25% Polyamide, 14% Polyester, 7% Cotton Ultrachevron: 52% Acrylic, 26% Polyamide, 15% Polyester, 7% Cotton Ultraflannel: 37% Acrylic, 26% Polyamide, 23% Polyester, 14% Cotton Ryder: 100% Polyurethane (Polycarbonate)
Backing	Evolutionary Series: Polyester Ultra Series: Osnaburg Ryder: Upholstery
Finish	Write-Off (Ink and Stain Resistant)
Performance	Evolutionary Series: Fungal Resistant, Denim-dye Transfer Resistant, Puncture Resistant; Hydrolysis 7 weeks Ultra Series: Inherently Ink and Stain Resistant Ryder: Hydrolysis 10 weeks
Fire Codes	CAL TB 117-2013, NFPA 260/UFAC Class 1 Ultra Series: ASTM E-84 (unadhered), IMO 8.2 (and above) Ryder: ASTM E-84 (adhered), IMO 8.2 (and above)
Durable	Evolutionary Series: Exceeds 100,000 double rubs; Taber Grade 5 Ultra Series: Exceeds 250,000 double rubs Ryder: Exceeds 300,000 double rubs
Environmental	Evolutionary Series: Annex XVII REACH Compliant; ROHS Compliant Ultra Series: Oeko-Tex 100 Compliant Ryder: Oeko-Tex 100 Compliant; CA 01350 Compliant
Cleaning Code	Evolutionary Series: WS (Bleach (1:10), Disinfectant –Based Cleaners) Ultra Series: W (Complete cleaning instructions at architex-ljh.com) Ryder: WS (Bleach (1:5), Disinfectant –Based Cleaners)



Architex®

For more colors visit www.architex-ljh.com

krug
 TEXTILES

solutions@krug.ca | www.krug.ca | 1.888.578.5784