

Ultrafabrics Legacy Collections

Brisa, Brisa Distressed, Promessa, & Ultraleather



krug
TEXTILES



Ultraleather



363-3464 Tusk

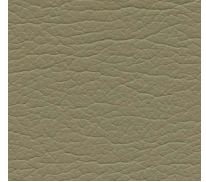


533-3822 Bone

291-5684 Arctic



291-5676 Pelican



291-1256 Papyrus



533-3775 Mystic Beige



535-3273 Shield



363-3785 Desert Taupe



533-5802 Ash



363-3462 Woodpecker



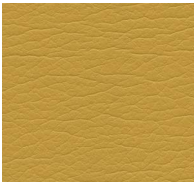
535-3340 Desert Tan



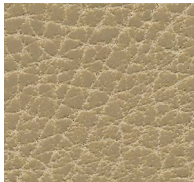
291-3287 Cocoa Nib



533-3022 Shiitake



291-8272 Citronella



535-3134 Buckskin



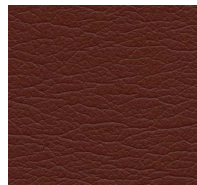
291-3778 Pecan



Brisa Distressed



291-3926 Cashmere



291-1412 Earthenware

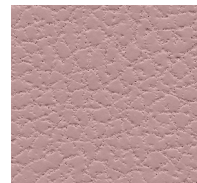
535-3972 Lasso



363-3786 Buttered Toffee



533-3591 Caramel



533-6596 Ice Pink



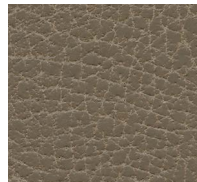
363-1444 Fireclay



291-3666 Fudge



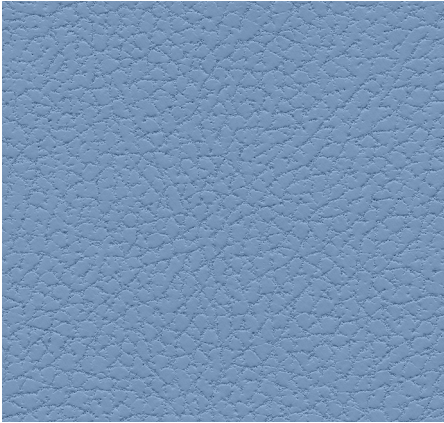
535-3974 Steerhide



535-3871 Moccasin



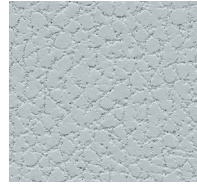
363-1443 Rumba Red



Brisa

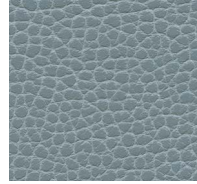


291-5776 Classic Grey

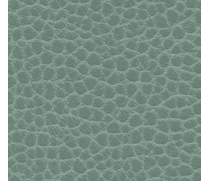


533-6528 Clear Quartz

533-2793 Harbor Mist



363-2695 Aquamarine



363-7239 Aqua Spring



533-2794 Rising Tide



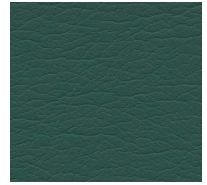
363-2792 Lake Blue



291-2716 High Seas



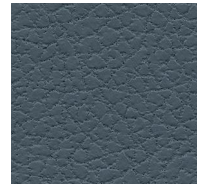
291-5374 Flagstone



291-7234 Emerald Isle



291-2478 Diplomat Blue



533-2645 Cambridge Blue



533-4361 Lambs Ear



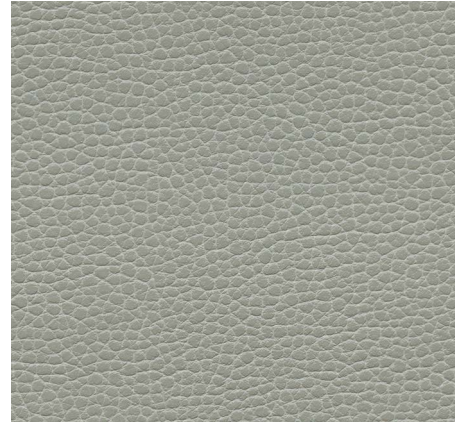
363-2672 Corn Flour



533-5820 Quicksilver



291-5708 Granite

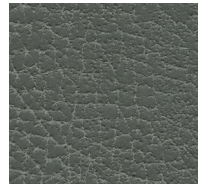


Promessa

363-5818 Ash



363-5354 Galaxy Fog



535-5679 Iron



533-2694 Night Navy



291-3286 Moth Wing



291-5763 Charcoal



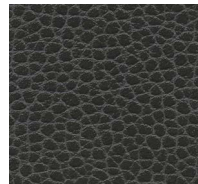
535-5773 Stormy



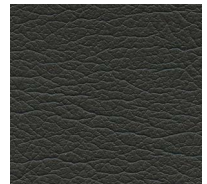
533-5749 Black Onyx



533-5360 Hazy



363-5011 Battleship



291-5607 Raven Wing

| Collection | Composition | Weight / Thickness | Repeat | Abrasion | Air Permeability / Sound Absorption |
|---|---|--|--|---------------------------------------|-------------------------------------|
| Brisa Brisa Distressed Breathable Technology Acoustical Properties | 100% Polycarbonate Polyurethane Surface 65% Recycled Polyester, 35% Rayon Backing | 8.9 oz. per sq. yard 300 grams per sq. metre / Approx. 0.95 mm | 8"V x 10.5"H / 203mm V x 267mm H (Brisa Distressed) | ASTM D4157 300,000 DR Wyzenbeek | ASTM D737 / ASTM C423 |
| Promessa | 100% Polycarbonate Polyurethane Surface 65% Recycled Polyester, 35% Rayon Backing | 11.5 oz. per sq. yard 390 grams per sq. metre / Approx. 1.1 mm | N/A | ASTM D4157 400,000 DR Wyzenbeek | N/A |
| Ultraleather | 100% Polycarbonate Polyurethane Surface 100% Reinforced Rayon Backing containing TENCEL™ Modal fibers | 9.7 oz. per sq. yard 330 grams per sq. metre / Approx. 0.95 mm | N/A | ASTM D4157 400,000 DR Wyzenbeek | N/A |
| Width: | 54" | | | | |
| Hydrolysis: | 16 Weeks ASTM D3690 SECT. 6.11 (Hydrolytic Stability) / ISO 1419 Method C (Accelerated Ageing) | | | | |
| F/R Rating: | ASTM E84 (adhered) - Class A CA TB 117-2013 - Pass FMVSS 302 - Pass NFPA 260 - Class 1 UFAC - Class 1 | Can be treated to meet FR specifications. These fabrics, when treated and/or used with other compatible furniture components, have been shown to perform under the fire test conditions of ASTM E84 (unadhered), BS 5852 Source 0, 1 & 5 (Cig, Match and Crib 5), IMO FTPC Part 8, and BS EN 1021 Parts 1 & 2. | | | |
| Adhesion of Coating: | ASTM D751 | | | | |
| Tear Strength: | ASTM D2261 | | | | |
| Seam Strength: | ASTM D751 (Tack Tear) | | | | |
| Breaking Strength: | ASTM D751 | | | | |
| Tensile Strength: | BS EN ISO 1421 | | | | |
| Colorfastness to Crocking: | AATCC 8, Grade 4-5 Wet & Dry | | | | |
| Colorfastness to Light: | AATCC 16.3, 200 Hours, Grade 4 ISO 105 B02, Grade 6 | | | | |

For more information on certifications and standards, sustainability, as well as cleaning and care instructions, click here to visit our website.

TENCEL™ is a trademark of Lenzing AG