

Krug Supply Arrangements



krug

... Advancing Design Through Innovation

Proudly Canadian



Founded by Hartman Krug in 1880, Krug Inc still operates in the Heartland of Southern Ontario boasting of over 140 years of producing high quality office furnishings that can be found in workspaces all across North America.



krug

... Advancing Design Through Innovation

Table of Contents

Programs and Contacts

Seating

Category 2 - Worksurface Products

Category 3 - Filing and Storage Products

Category 4 - Phone Booths and Pods

Category 6 - Meeting Tables

Category 6 - Collaborative Meeting Table

Category 6 - Occasional Tables

Category 6 - Console Tables

Category 6 - Training Tables

Category 6 - Multimedia Tables

Category 6 - Banquettes

Category 6 - Kitchenette Chairs

Category 6 - Lounge Chairs

Category 6 - Modular Soft Seating

Category 6 - Sofas

Category 6 - Tablet Arm Chairs

Category 6 - Ottomans and Stools

Wood Finishes & Laminates

Fabrics

Programs and Contacts

Krug Supply Arrangement - Seating: E60PQ-120001/H
Krug Supply Arrangement - Furniture for Work Spaces: E60PQ-140003-037/D

General Inquiries:

Kristen Carter
1-888-578-5784 ext. 230
kcarter@krug.ca

Receiving bid solicitations:

Maggie Siwek
1-888-578-5784 ext. 228
bidspec@krug.ca

Website: www.krug.ca
Supplier's Official Language: English
Payment by Visa or Mastercard: Accepted
Supplier's Work Coverage: National

Seating: E60PQ-120001/H

Corfu



Aqua



Karma



Callisto



Mobi



Dorso Guest



Seating: E60PQ-120001/H



C5



Dorso T



Seating: E60PQ-120001/H



Dorso S



Dorso E



Categories 2 & 3 - WORK SURFACE PRODUCTS & FILING AND STORAGE PRODUCTS

Furniture for Work Spaces: E60PQ-140003-037/D



Artemis



Artemis Laminate

Category 4 - Phone Booths And Pods

Furniture for Work Spaces: E60PQ-140003-037/D



Zola Privacy



Zola Privacy

Category 6 - COLLABORATIVE PRODUCTS – Meeting, Training Tables & Console Tables

Furniture for Work Spaces: E60PQ-140003-037/D



NUVO



MILLENNIUM



REVO



CHIT CHAT



ANDO



V2

Category 6 – COLLABORATIVE PRODUCTS - Multimedia Tables

Furniture for Work Spaces: E60PQ-140003-037/D

ARTEMIS (WOOD & LAMINATE)



Category 6 - COLLABORATIVE PRODUCTS – Occasional Tables

Furniture for Work Spaces: E60PQ-140003-037/D



Sutton



Leyton



Zola



Karma



Faeron



Millennium



Category 6 - COLLABORATIVE PRODUCTS – Banquettes, Modular Sofas

Furniture for Work Spaces: E60PQ-140003-037/D



ZOLA PRIVACY
ZOLA LOUNGE
ZOLA MODULAR
ZOLA BENCHING



Category 6 - COLLABORATIVE PRODUCTS – Kitchenette Chairs

Furniture for Work Spaces: E60PQ-140003-037/D



CORFU



CAPRI

Category 6 - COLLABORATIVE PRODUCTS - Kitchenette Chairs

Furniture for Work Spaces: E60PQ-140003-037/D



Karma Counter Height



Corfu Barstool



Manolo Barstool

Category 6 - COLLABORATIVE PRODUCTS - Lounge Chairs

Furniture for Work Spaces: E60PQ-140003-037/D



ZOLA



LEYTON



FAERON

Category 6 - COLLABORATIVE PRODUCTS - Sofas

Furniture for Work Spaces: E60PQ-140003-037/D



CARLYLE



BRIO

Category 6 - COLLABORATIVE PRODUCTS - Sofas

Furniture for Work Spaces: E60PQ-140003-037/D



Faeron Lounge



Category 6 - COLLABORATIVE PRODUCTS - Tablet Arm Chairs & Ottomans

Furniture for Work Spaces: E60PQ-140003-037/D



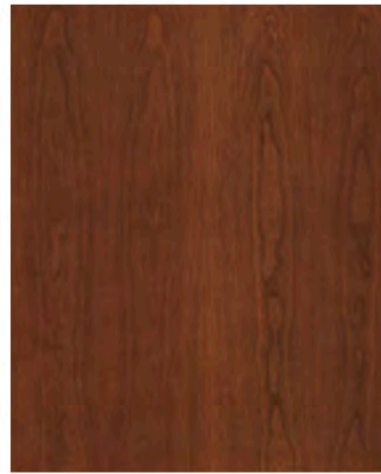
ZOLA LOUNGE
ZOLA SEATABLES
ZOLA BENCHES



Standard Finishes

Cherry

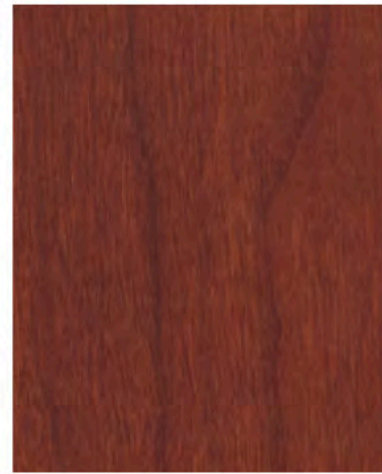
Flat-Cut



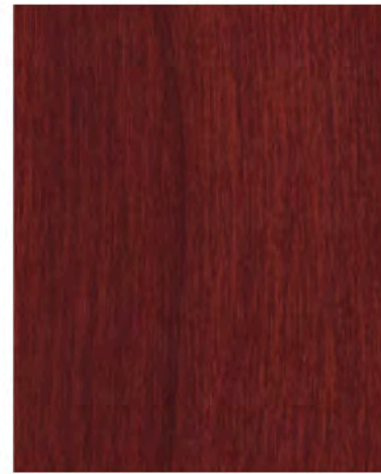
Light Cherry



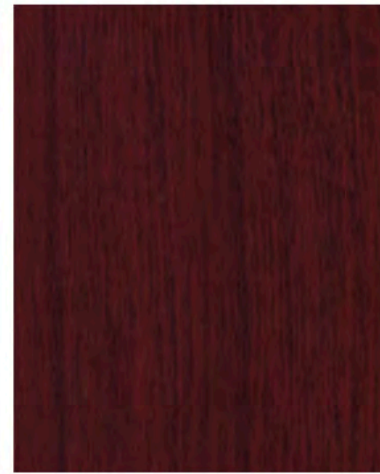
Natural Cherry



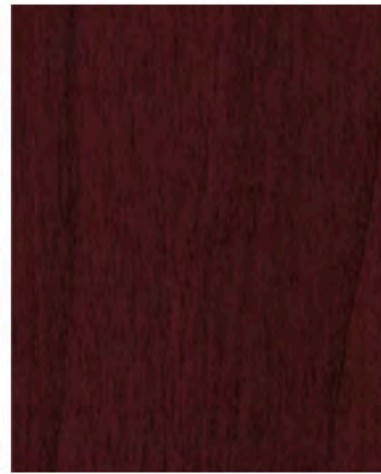
American Cherry



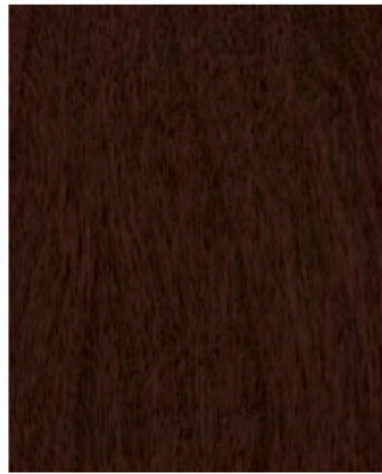
Medium Cherry



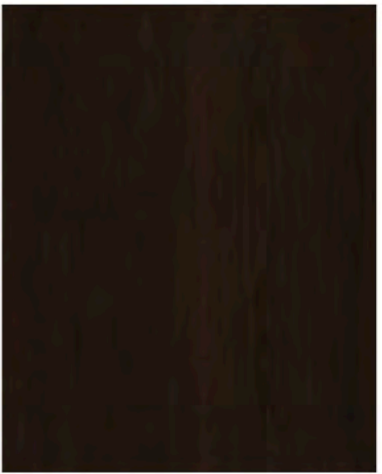
Appalachian Cherry



Imperial Cherry

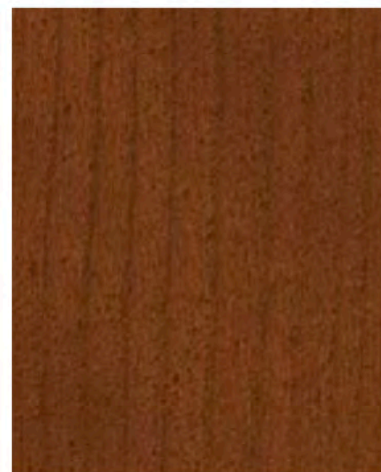


Standard Cherry

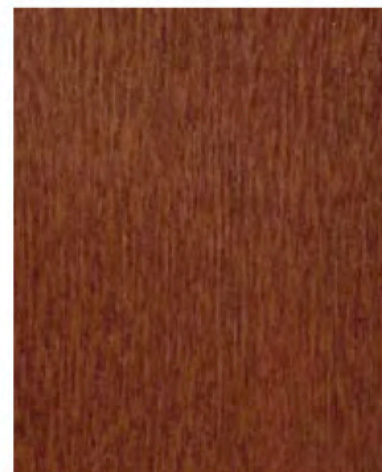


Sable Cherry

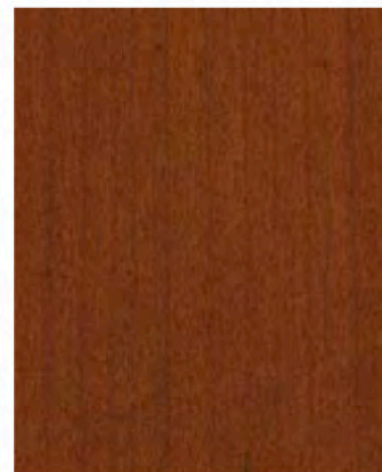
Quarter-cut



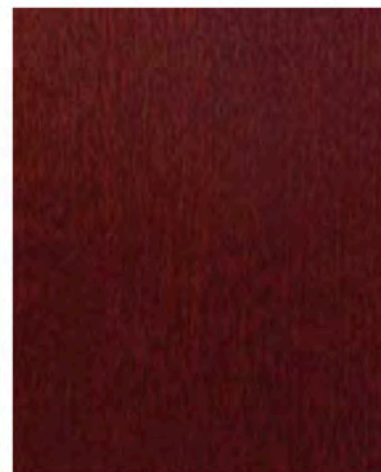
Light Cherry



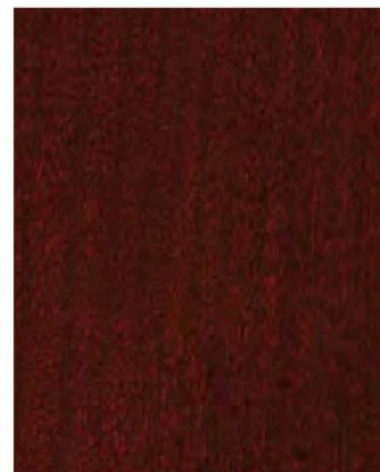
Natural Cherry



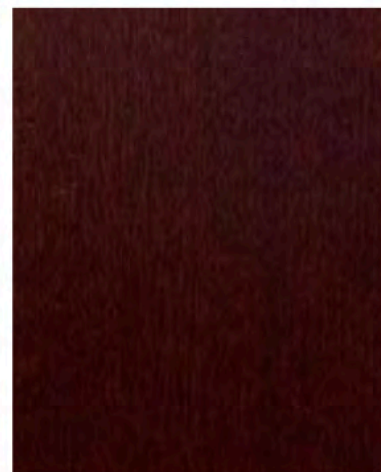
American Cherry



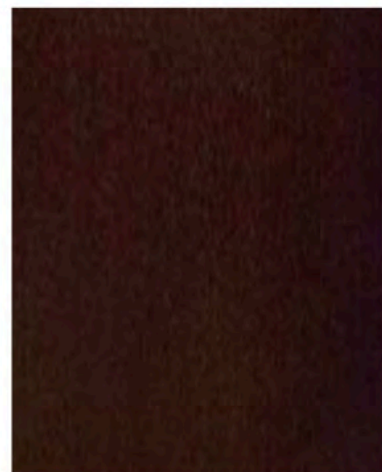
Medium Cherry



Appalachian Cherry



Imperial Cherry



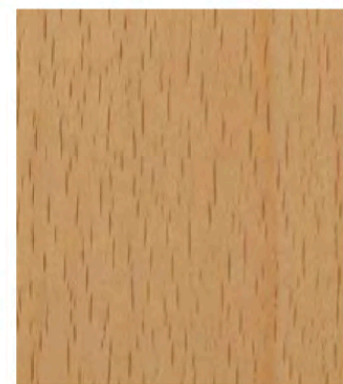
Standard Cherry



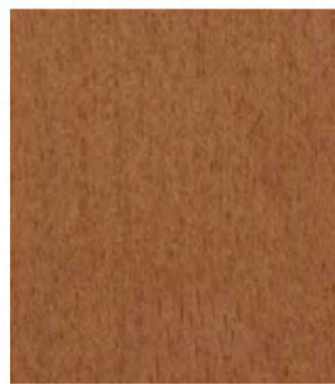
Sable Cherry

Standard Finishes

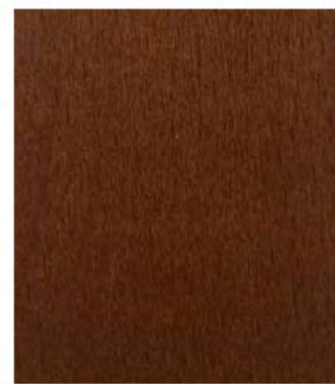
Beech



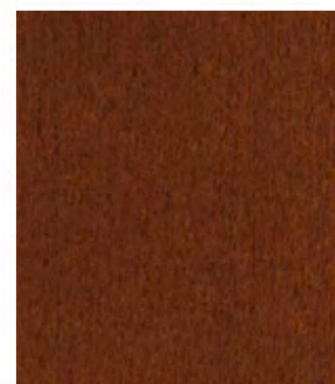
Clear Beech



Medium Anigre



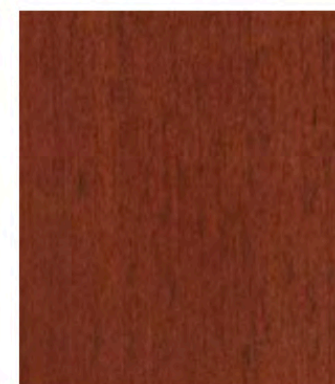
Natural Cherry



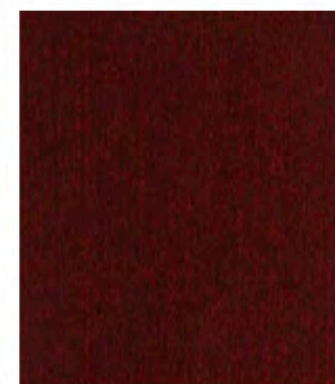
Light Cherry



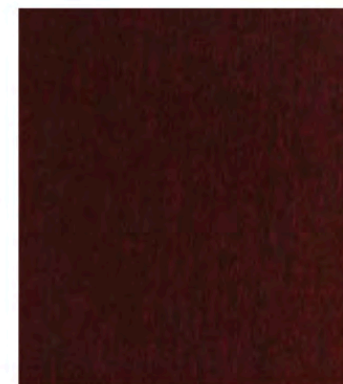
American Cherry



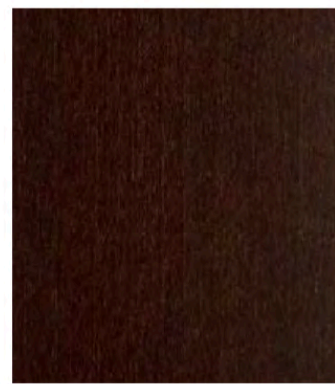
Medium Cherry



Appalachian Cherry



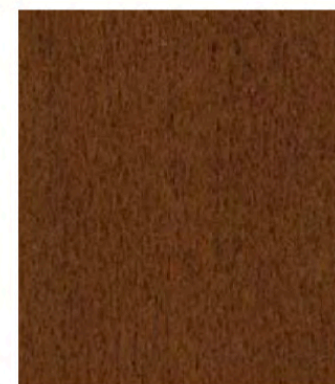
Imperial Cherry



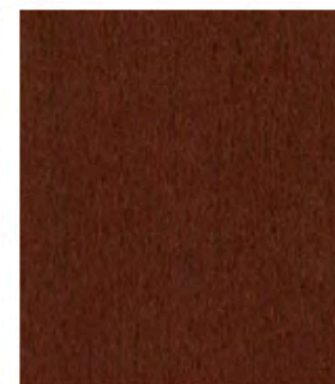
Sable Cherry



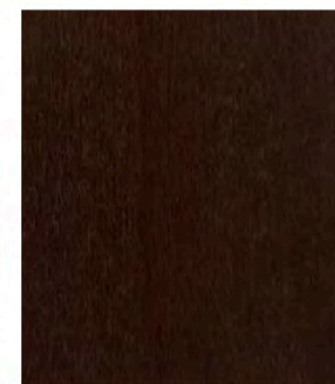
Standard Cherry



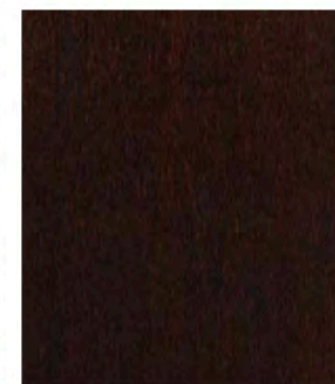
Natural Walnut



Regular Walnut



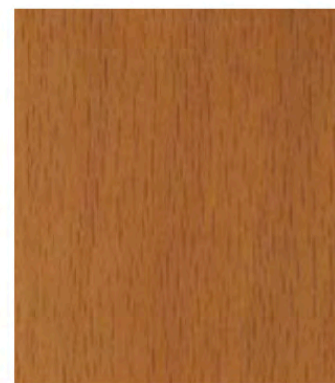
Cordovan Walnut



Dark Walnut



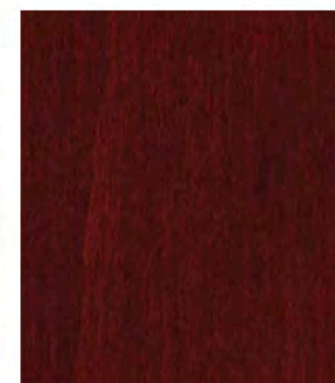
Light Oak



Harvest Oak



Mellow Oak



Mahogany



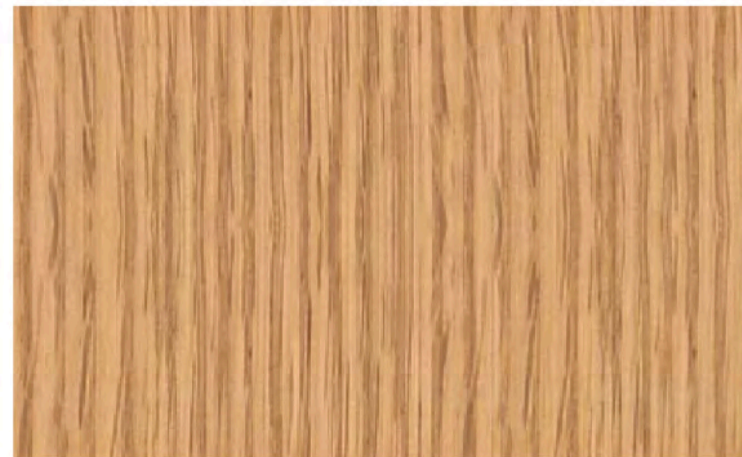
Espresso



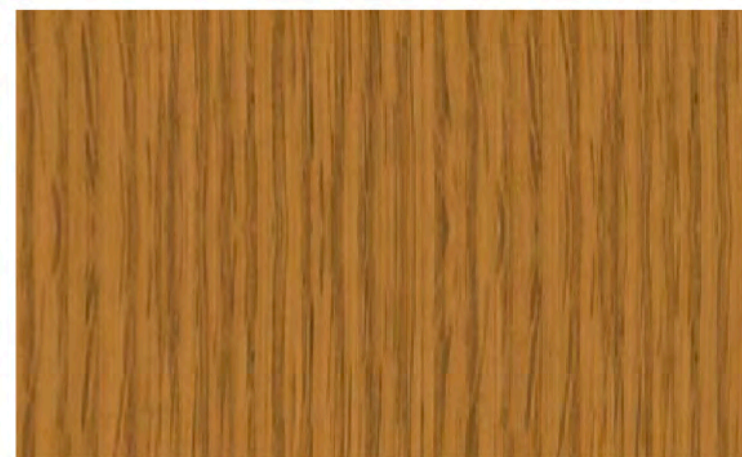
SilverGrey On Oak

Standard Finishes

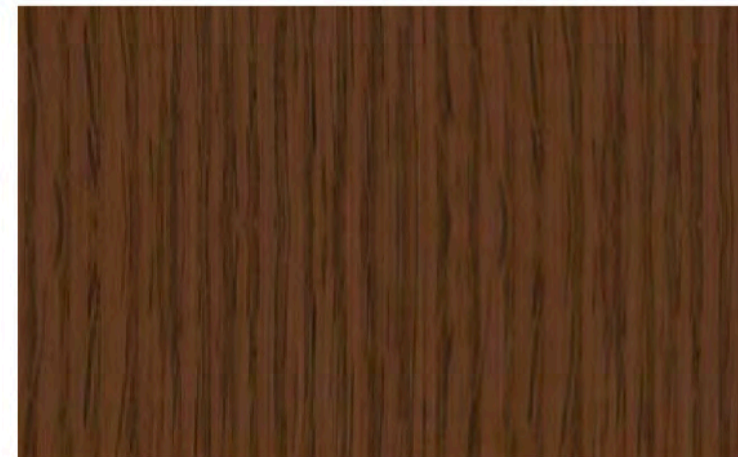
Rift Oak



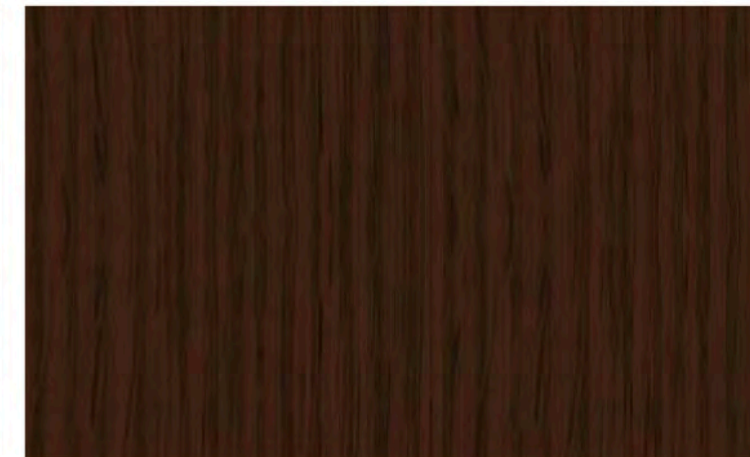
Light Oak



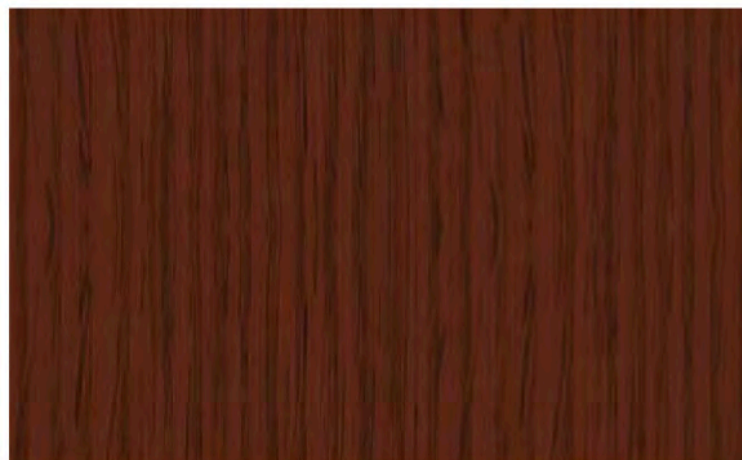
Harvest Oak



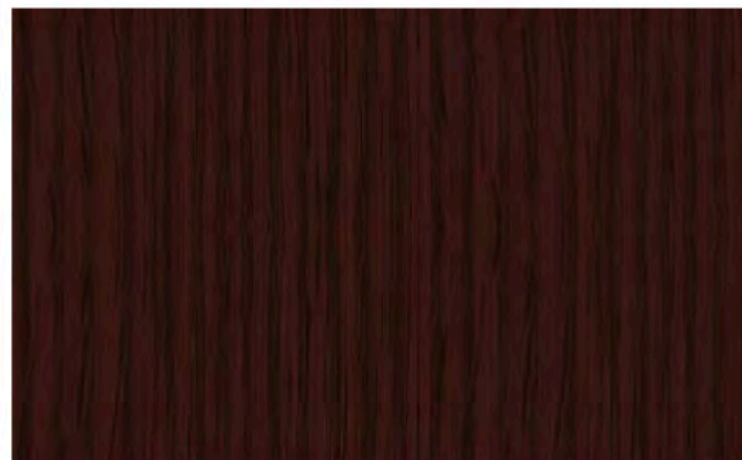
Mellow Oak



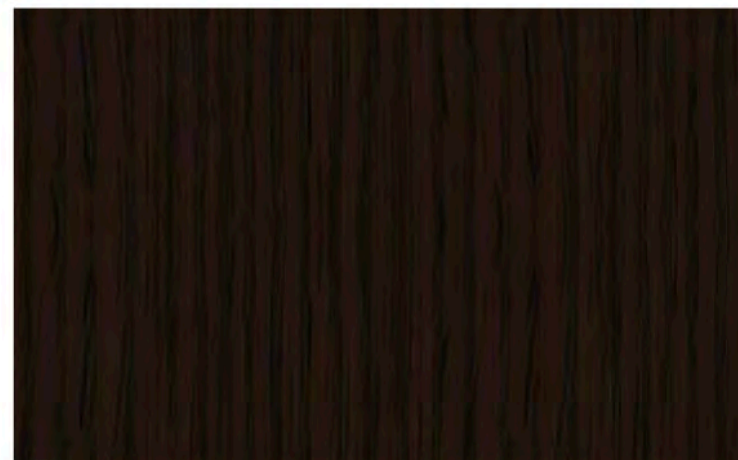
Walnut on Oak



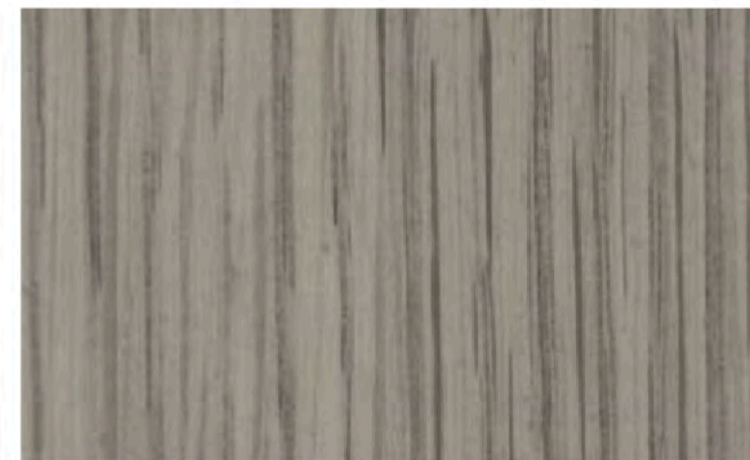
Medium Cherry on Oak



Mahogany on Oak



Espresso on Oak

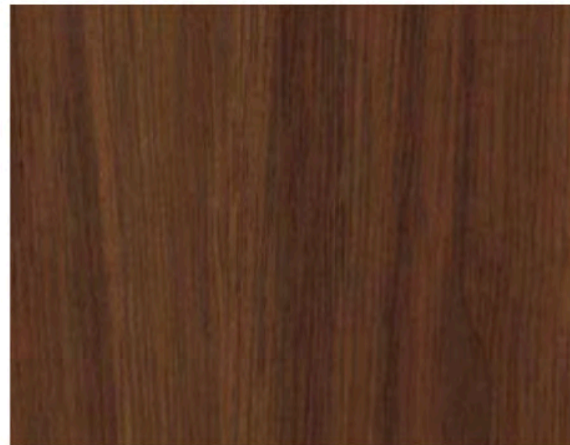


SilverGrey on Oak

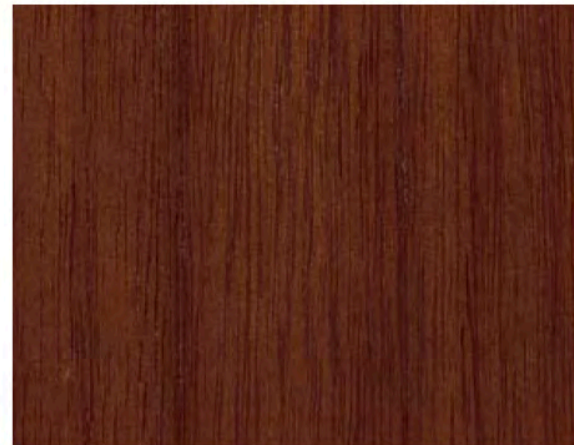
Standard Finishes

Walnut

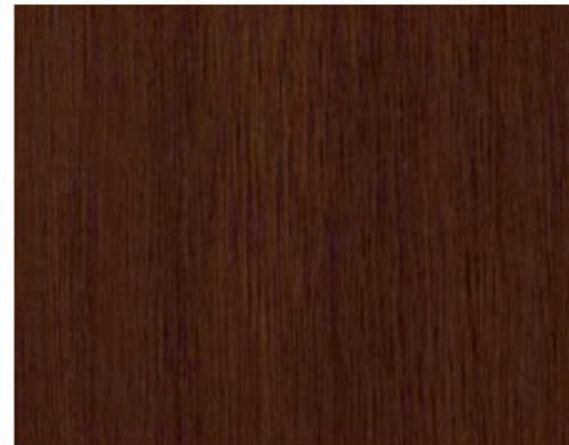
Flat-Cut



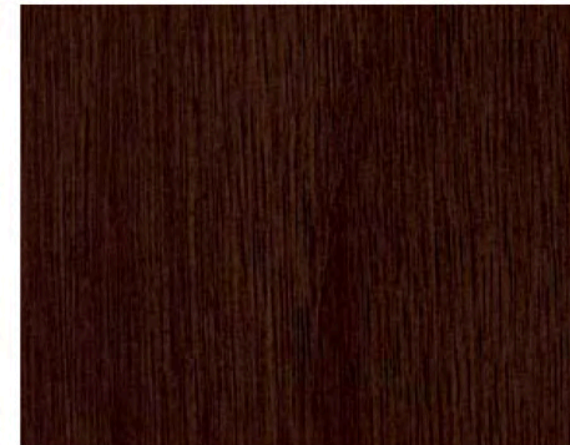
Natural Walnut



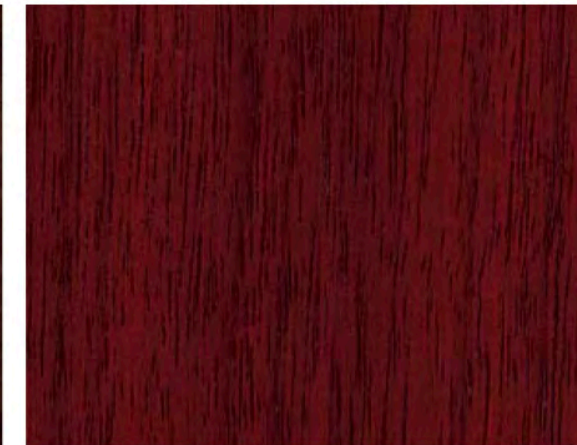
Regular Walnut



Cordovan Walnut

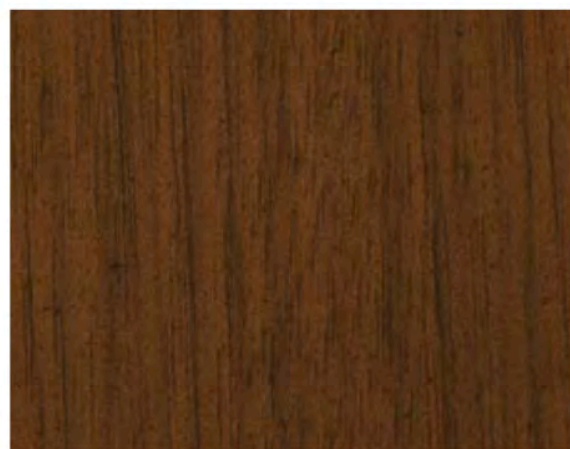


Dark Walnut

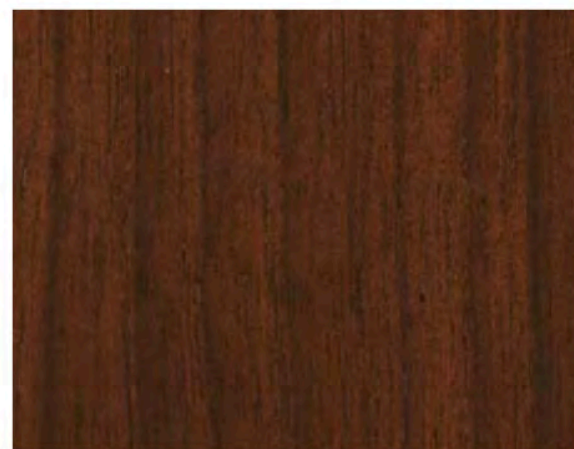


Mahogany on Walnut

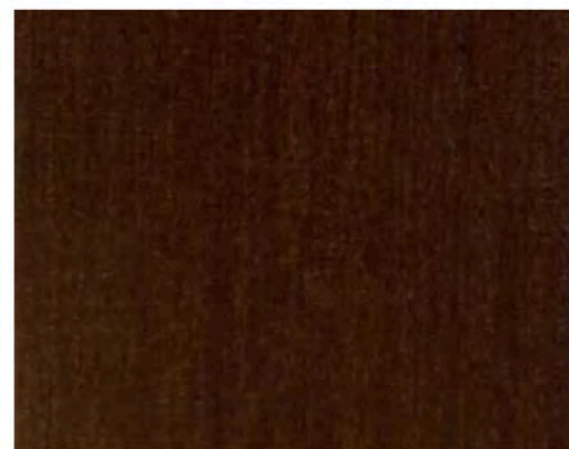
Quarter-cut



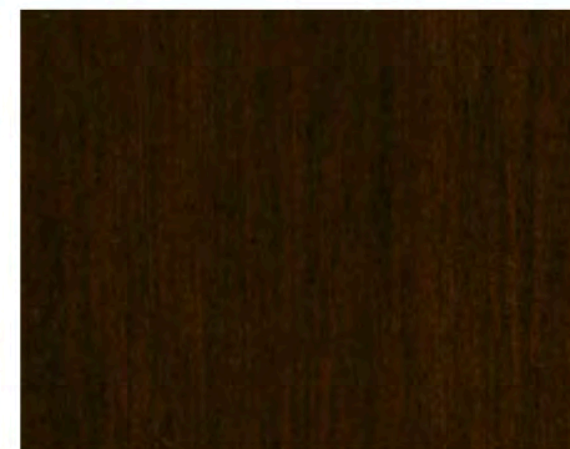
Natural Walnut



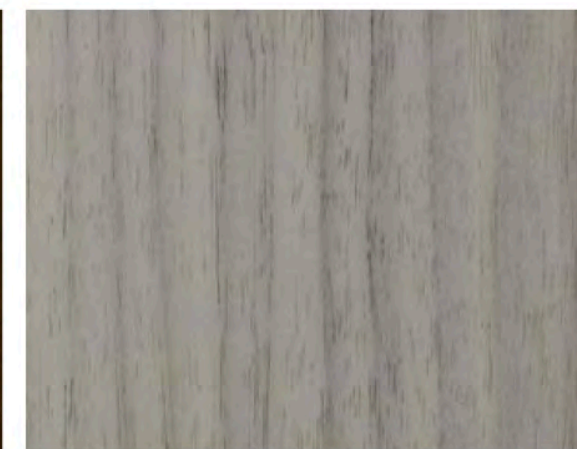
Regular Walnut



Cordovan Walnut



Dark Walnut

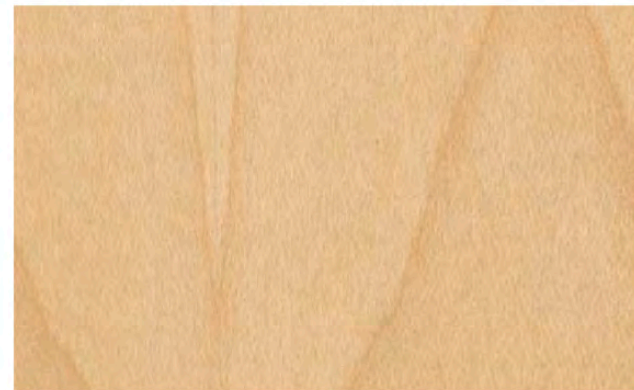


SilverGrey on Walnut

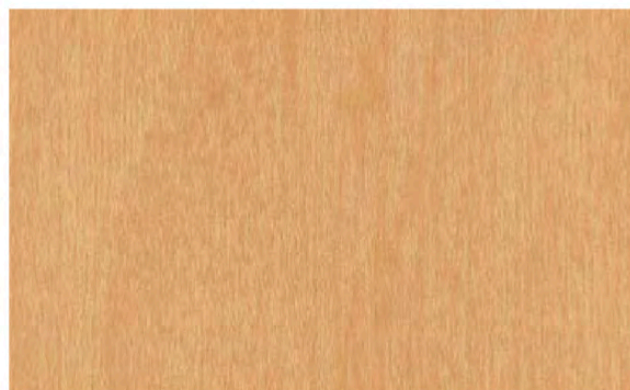
Standard Finishes

Maple

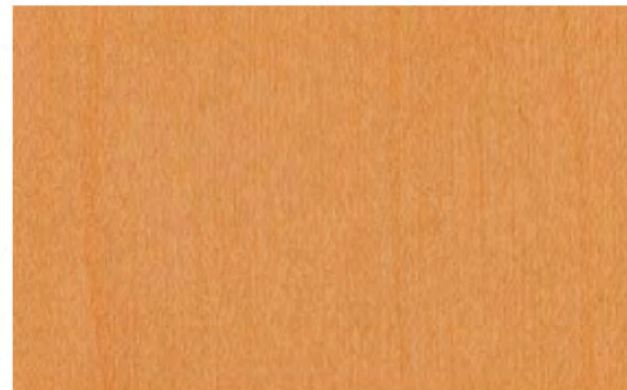
Flat-Cut



Clear Maple

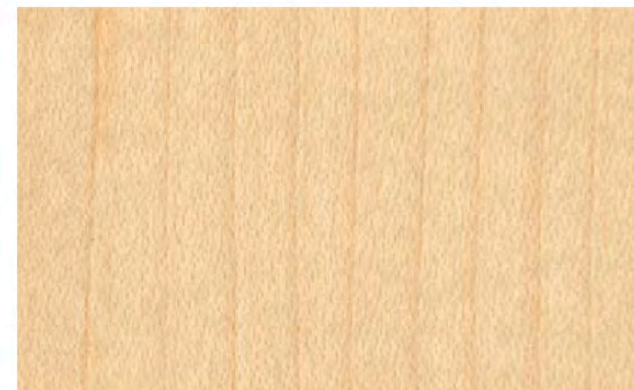


Wheat Maple

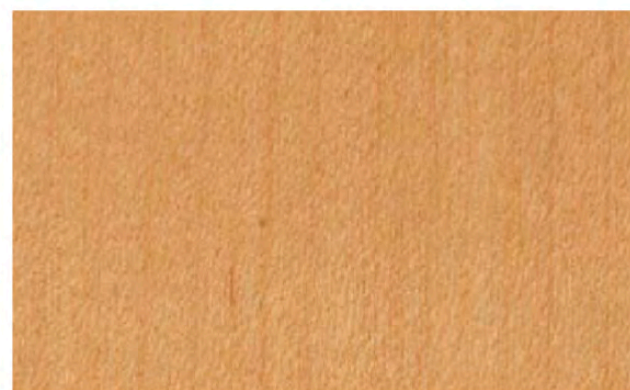


Honey Maple

Quarter-cut



Clear Maple



Wheat Maple

Standard Laminate Program



Champagne



Hardrock Maple



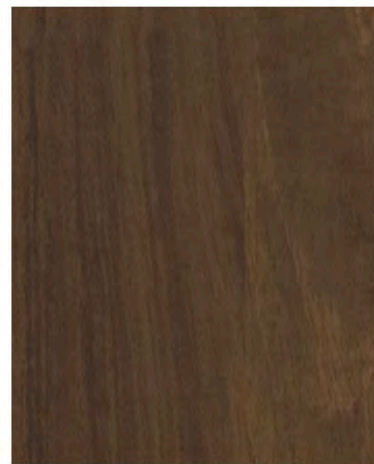
Dune



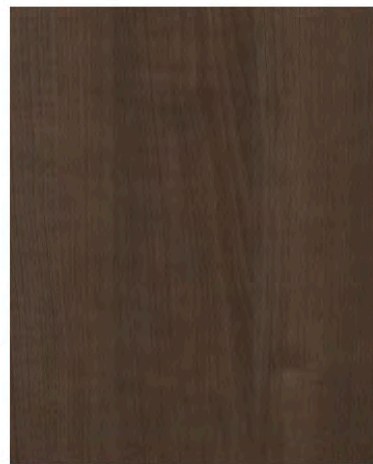
Gingerbread



Portobello



Park Avenue Walnut



Chocolate



Nutmeg



Ash



Willow



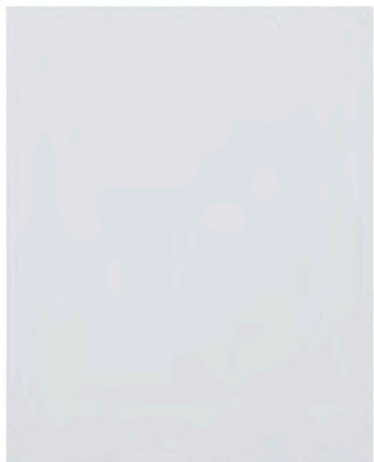
Copper



Shiraz Cherry



Dark Walnut



Designer White



Platinum



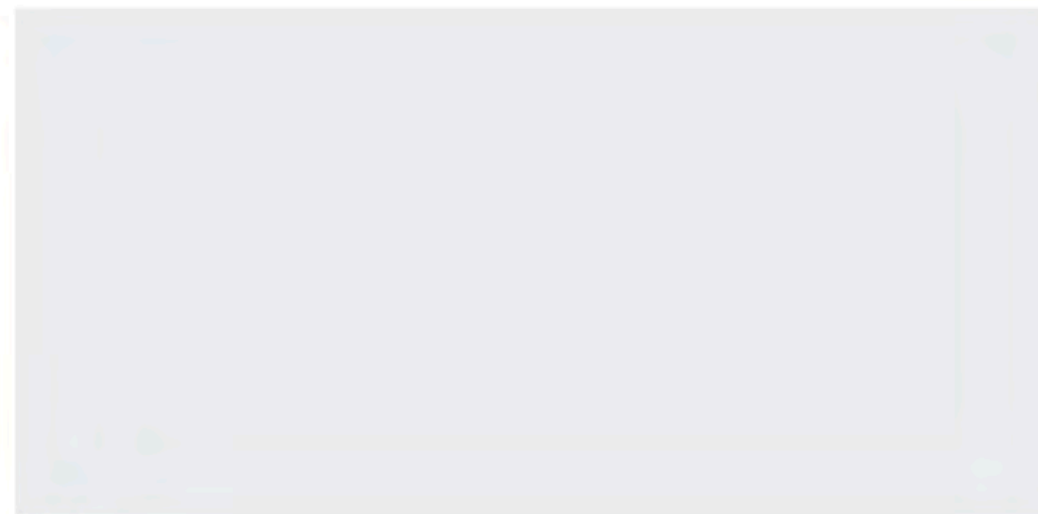
Earth

Laminates

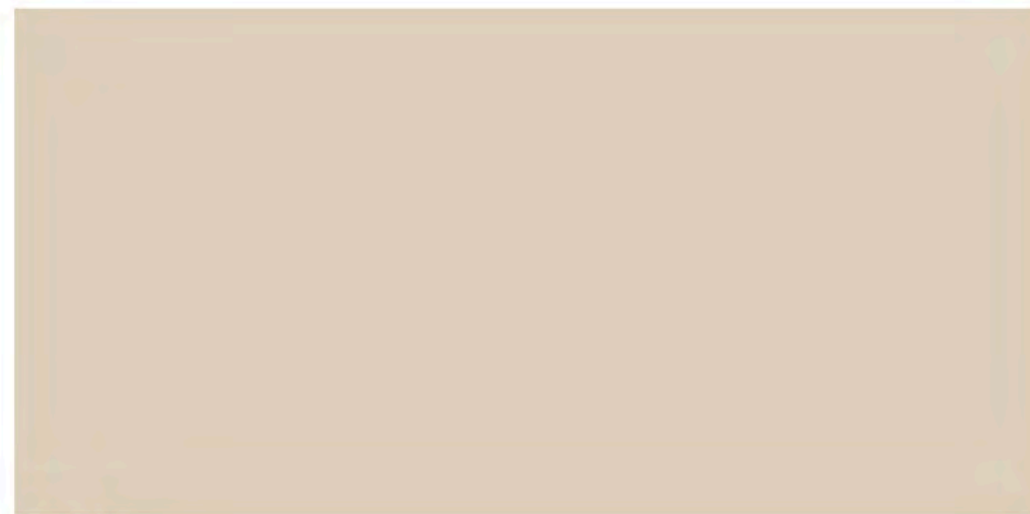
Charcoal

Standard Finishes

Palette



White



Sand



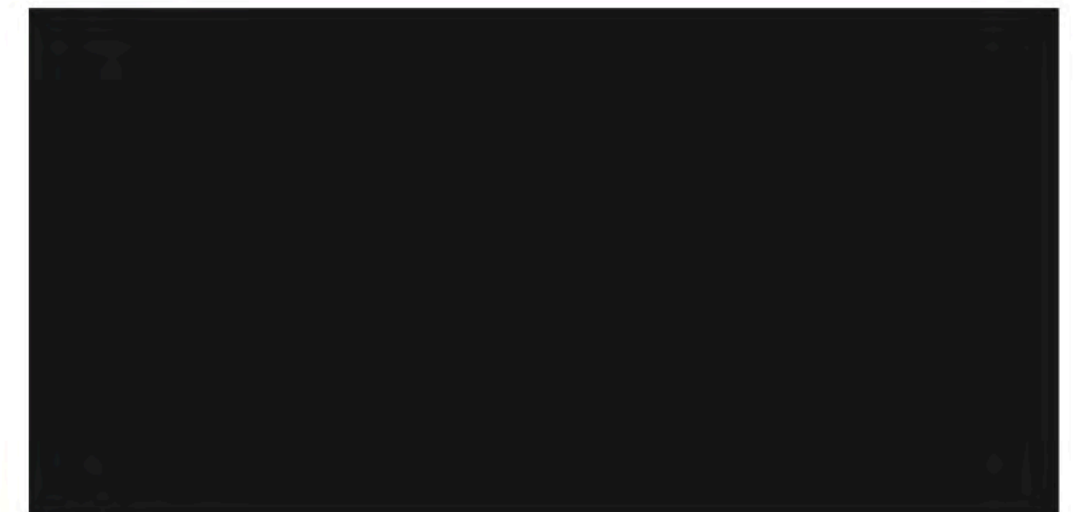
Soft Green



Steel Blue



Slate



Black

Krug Textiles – Fabric Program

Grade 1

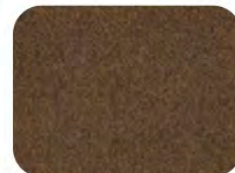
ARLO



308 MIDNIGHT



306 PETROL



84 NUTMEG



908 CHARCOAL



62 OATMEAL



93 SEAL



90 LIMESTONE



601 PEARL

FRANKLIN



47 CAMEL



3009 MIDNIGHT



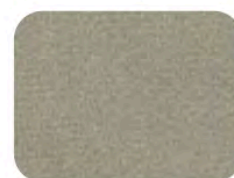
909 BLACK



67 FAWN



9004 CHARCOAL



97 CINDER



308 PETROL



94 METAL



108 ORCHID

COMRADE



309 MIDNIGHT



84 TEAK



601 SNOW



63 LINEN



57 MARIGOLD



24 ALPINE



31 DUCK EGG

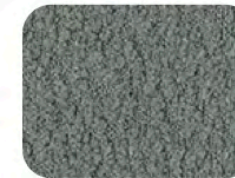


905 IRON

FELICITY



601 IVORY



305 SKY



64 PUTTY



603 TAUPE



62 FAWN



93 COAL



36 BLUEBERRY



405 HENNA

Krug Textiles – Fabric Program

Grade 2

GRADDY



25 CAPER



31 SKY



34 SLATE



604 FLAX



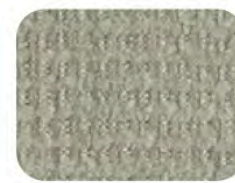
84 TEAK



901 CHAR



98 NICKLE



93 GRAY

YATES



84 BIRCH



44 CLAY



803 TOAST



87 TAUPE



25 JUNIPER



305 INDIGO



109 CRANBERRY



92 ZINC



91 SILVER



908 CHARCOAL

MCCOY



608 TUNDRA



601 CREME



32 ROBIN'S EGG



908 CHARCOAL



94 MERCURY



62 COPPER

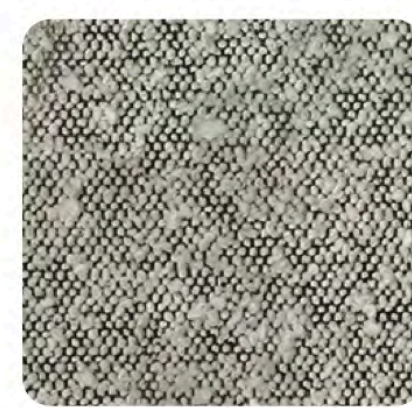


84 BARK



108 CORDOVAN

ORIS



908 DOMINO



604 BARK



305 MIDNIGHT



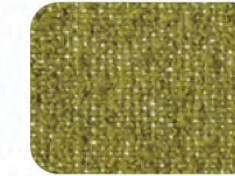
601 CREAM



64 PUTTY



306 DELFT



205 CHARTREUSE



902 ZINC

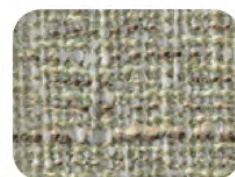
Krug Textiles – Fabric Program

Grade 3

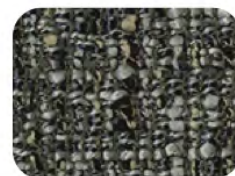
MORITZ



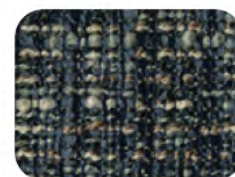
205 SPEARMINT



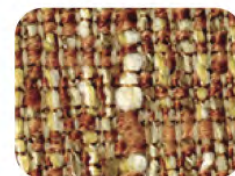
61 OYSTER



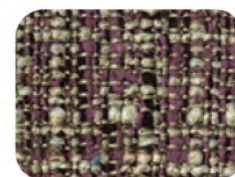
9008 CHARCOAL



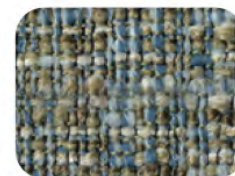
306 CADET



82 CLAY



104 MULBERRY



304 CAPRI



31 AEGEAN

BISCOTTI



302 CAPRI



45 SPICE



61 DESERT



91 GRANITE

LORENZO



306 INDIGO



24 ALPINE



601 CREAM



64 LINEN



106 HENNA



91 FLANNEL



604 STUCCO



32 MIST

INTRIGUE



601 OYSTER



27 OLIVE



805 PECAN



4003 OCHRE



608 STUCCO



908 CHARCOAL



605 STRAW



3009 MIDNIGHT

Krug Textiles – Fabric Program

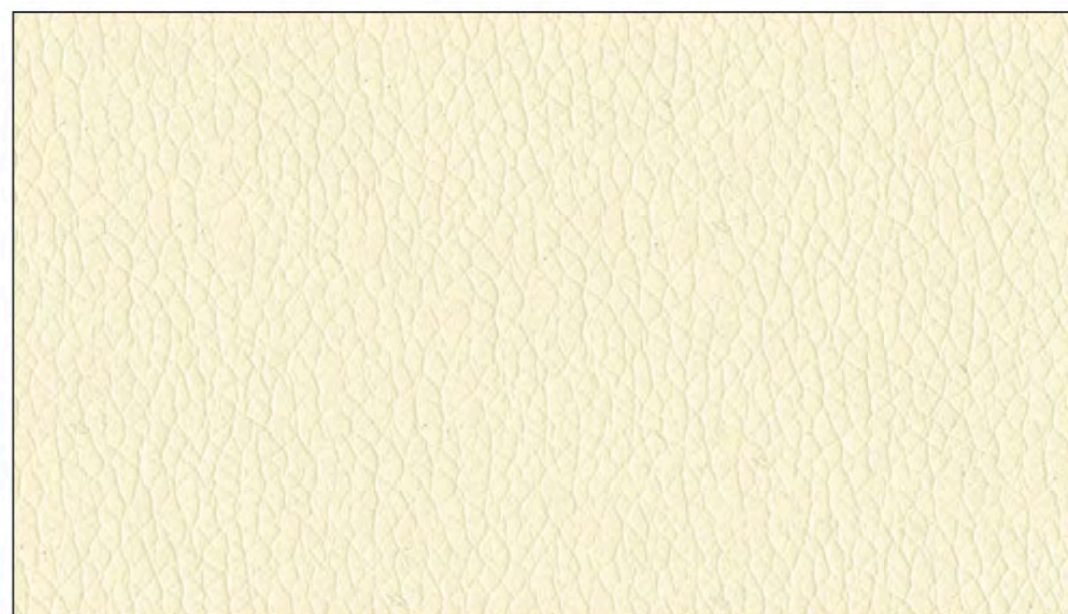
LUXE



White
FL3822



Cream
FL6003



Vanilla
FL0061



Parchment
FL0605



Sandstone
FL0608



Taupe
FL3948



Mocha
FL0808



Tan
FL0802



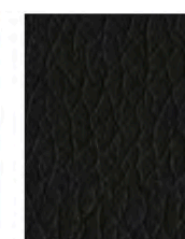
Chestnut
FL0087



Bisque
FL0805



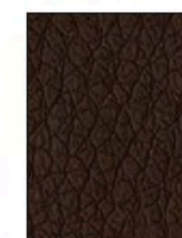
Chocolate
FL8020



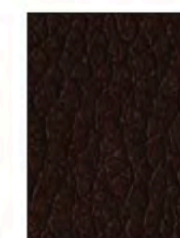
Black
FL9009



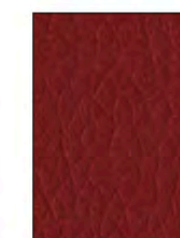
Earth
FL0084



Brick
FL0011



Wine
FL0108



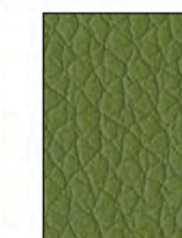
Garnet
FL0017



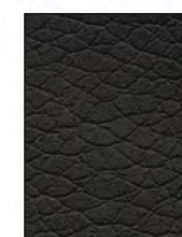
Rust
FL0014



Citron
FL0054



Sprig
FL0205



Chinchilla
FL6009



Steel
FL0905



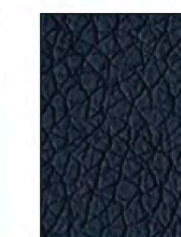
Grey
FL9003



Lagoon
FL0037



Pacific Blue
FL3003



Navy
FL3006



Plum
FL1009

Krug Textiles – Fabric Program

IMPRESSION



krug and the environment

Krug is committed to:

- Conducting business in a socially acceptable and responsible manner.
- Incorporating sustainability and environmentally responsible practices in all activities throughout Krug.
- Ensuring it's Management team supports and promotes all environmental objectives and procedures set forth in this policy.
- Using, recycling and reducing/eliminating waste materials wherever possible throughout the company.
- Allocating and sustaining adequate resources for the effective management of all necessary current and future environmental program requirements.
- Pollution prevention to land, air and water by ensuring legal compliance with all legislation and good business practices and pursuing end of life use for all products to reduce waste destined to landfill.
- Promote life-cycle thinking throughout all aspects of environmental matters.
- Developing supporting procedures and goals based on the needs and objectives. These procedures and goals will be communicated throughout Krug.

Certifications





krug

... Advancing Design Through Innovation