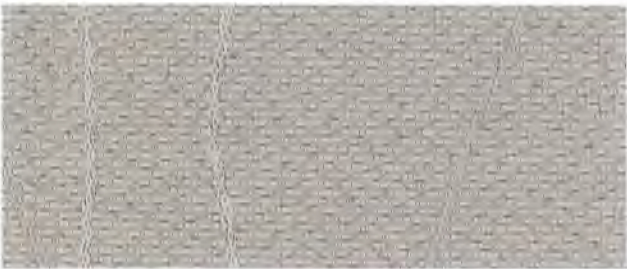
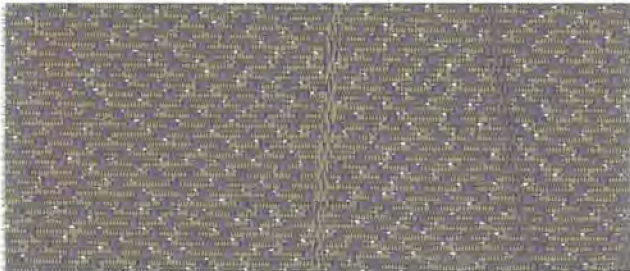


KRUG TEXTILES | TACKBOARD & PANEL FABRICS



krug
TEXTILES

SPECIFICATIONS

66" Pattern	Fiber Content	Finish	Abrasion (D.R.)	Light-fastness	Approx. Repeats	Cleaning Code
PACT ☼☼☼☼☼	65% Post Industrial Recycled Polyester, 35% Post Consumer Recycled Polyester	N/A	50,000	60 Hrs. Class 4	1/8" L, 1/8" W	W
TENOR ☼☼☼☼☼	65% Post Industrial Recycled Polyester, 35% Post Consumer Recycled Polyester	N/A	N/A	40 Hrs. Class 4		WS
UNIVERSE ☼☼☼☼☼	100% Polyester	N/A	N/A	40 Hrs. Class 4	3 1/2" L, 3 1/4" W	SW

All patterns pass ASTM E-84 and are approved through UL's Fabric Recognition Program R16552

*ACT® Registered Certification Marks

EXPLANATION OF ACT ICONS FOR UPHOLSTERY

FIRE RETARDANCY ☼	Flammability testing determined as fabric's resistance to burning. PASSES California 117
COLORFASTNESS TO WET & DRY CROCKING ☼	Colorfastness to wet & dry crocking refers to the rubbing off of color from the fabric onto clothing, hands or other materials and can occur under wet or dry conditions. PASSES AATCC 8-1974 Dry Crocking, Class 4 minimum; Wet Crocking, Class 3 minimum
COLORFASTNESS TO LIGHT ☼	Colorfastness to light is the degree to which fabric will retain its color when exposed to light. PASSES AATCC 16A-1974 or AATCC 16E-1976; Class 4 minimum at 40 hours NOTE: Class 4 minimum at 60 hours is recommended for direct sunlight exposure situations
PHYSICAL PROPERTIES ☼	3 physical property tests include: brush pill test to determine a fabric's pilling. Breaking/tensile strength is the ability of a fabric to withstand tension without breaking or tearing. Seam slippage is the pulling apart of fabrics at the seams. PASSES Brush Pill ASTM D3511, 3-4 minimum Breaking Strength ASTM D3597-D1682-64 (1975) 50 lbs. minimum in warp & weft Seam Slippage ASTM D3597-D434-75 25 lbs. minimum in warp & weft
ABRASION ☼ ☼	Abrasion is the ability of a fabric to withstand damage from wear and rubbing. There is a general contract specification as well as a heavy duty specification. PASSES ☼ <u>General Contract</u> ASTM 3597 modified (#10 cotton duck); 15,000 double rubs Wyzenbeek Method ☼ <u>Heavy Duty</u> ASTM 3597 modified (#10 cotton duck); 30,000 double rubs Wyzenbeek Method or ASTM D4966 (with 21 oz. weight); 40,000 rubs Martindale Method

CLEANING CODE DEFINITIONS

SW: Water-based agents, foam or water-free solvents may be used.
WS: Clean with water-based cleaning agents, foam or pure, water-free solvents (Energine, Carbona, Renuzit or other similar products). Vacuuming or light brushing is recommended to prevent dust and soil buildup.
W: Water-based cleaning agents or foam may be used.



krug
TEXTILES

For memo samples please contact.
MOMENTUM
TEXTILES
Canada 905-670-5002
Toll Free 800-366-6839
memosamples.com

PACT



Calla
PF09118822



Dove
PF09118855



Taupe
PF09119031



Lily
PF09118910



Lime
PF09118921



Delft
PF09118844



Sketch
PF09119009

TENOR



Rose Tan
PF09103697

UNIVERSE



Whitecap
PF09072677



Creme Brulee
PF09072611



Mica
PF09072633



Seneca
PF09072655



Milkyway
PF09072644



Cosmic
PF09072600



Depth
PF09072622